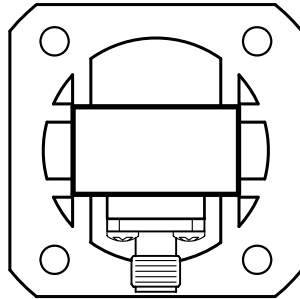
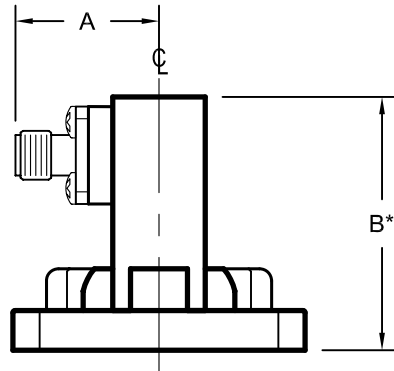
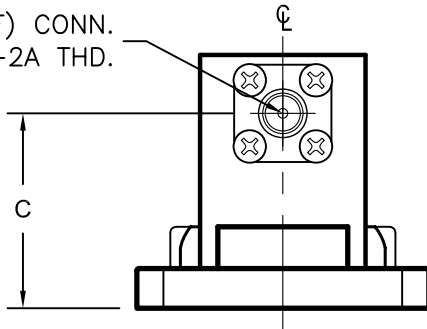


REV	AUTH	DATE	INITIAL RELEASE
A	RL	7/17/02	
B-K	-	-	REVISIONS B THRU K DOCUMENTED ON ECN 3-30-06-01
L	RL	3/01/06	FORMAT UPDATED, SEE ECN 3-30-06-01 FOR REVISIONS
M	RL	04/05/06	NOTES FOR K-TYPE CONN. ADDED
N	RL	3/24/08	WR51, WR34 DIMS UPDATED TO REFLECT MACH'D BODIES
P	M.R.	02/01/11	ADDED MODEL# GENERATOR, ADDED PRESSURE TEST OPTION (/PT)



FLANGE AS PER
REQUESTED
(COVER SHOWN)

*SMA (F) CONN.
1/4-36 UNS-2A THD.



DIMENSIONS (INCHES)			
WG TYPE	A	B	C
WR28	0.60	0.95	0.76
WR34	0.66	0.56	0.36
WR42	0.65	1.00	0.75
WR51	0.73	1.00	0.65
WR62	0.73	1.00	0.65
WR75	0.74	1.00	0.63
WR90	0.75	1.00	0.63
WR102	0.77	1.50	1.12
WR112	0.80	1.14	0.67
WR137	0.75	1.70	1.23
WR159	0.84	1.83	1.21
WR187	0.88	2.60	1.96
WR229	1.01	2.28	1.44
WR284	1.13	2.95	1.90
WR340	1.31	3.50	2.19
WR430	1.53	4.00	2.34
WR650	2.08	5.00	2.40

DIMENSION GIVEN ARE FOR MODELS WITH STANDARD FLANGE CONFIGURATION.
ACTUAL LENGTH MAY VARY FOR MODELS WITH SPECIAL FLANGE CONFIG.

MODEL NO.= WG SIZE - 25K/251* - MATERIAL (A/B)**- FLG./OPTION***


EXAMPLE: 75-303A-30-6-6

*251=SMA, 25K=2.9mm "K"

**A=ALUMINUM, B=BRASS

***10psi PRESSURE TEST=/PT

*TYPE-K CONNECTORS SUPPLIED WITH WR28 & WR34 MODELS.

THIRD ANGLE PROJECTION:			APPROVALS	DATE	 ADVANCED TECHNICAL MATERIALS, INC. TEL: (631) 289-0363 FAX: (631) 289-0358 www.atmmicrowave.com	THE INFORMATION IN THIS DRAWING IS PROPRIETARY AND SHALL NOT BE USED OR DISCLOSED WITHOUT THE PRIOR WRITTEN CONSENT OF ATM, INC. DO NOT SCALE DWG.		
UNLESS OTHERWISE NOTED, DIMENSIONS ARE IN INCHES, TOLERANCES ARE: FRACTIONS: ±1/64 ANGLES: ±1/2°			DRAWN RL	03/31/06		OUTLINE, W/G-COAX ADAPTER, SMA	SIZE A CAGE CODE OR8N4 ATM DWG # 5037W REVISION P	SCALE NONE MODEL # - SHEET 1/1
			CHKD.					
BASIC DIMENSION	DECIMALS 2 PLACE	3 PLACE	APRVD.					
UNDER 6"	±.02	±.005	MATERIAL PER ORDER					
6" - 12"	±.03	±.010	TREATMENT -					
OVER 12"	±.06	±.015	FINISH ATM GRAY					