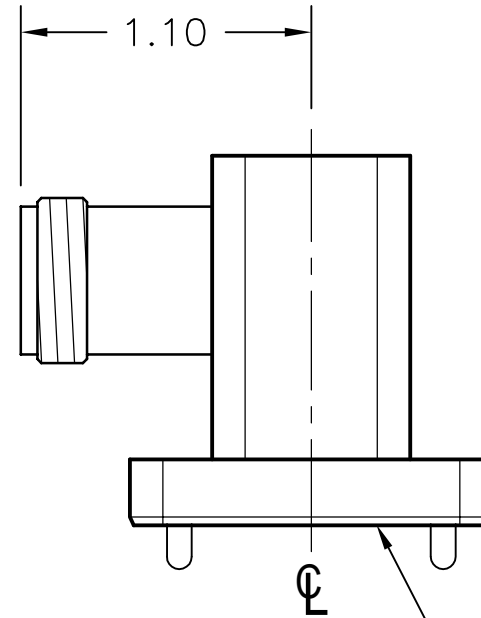
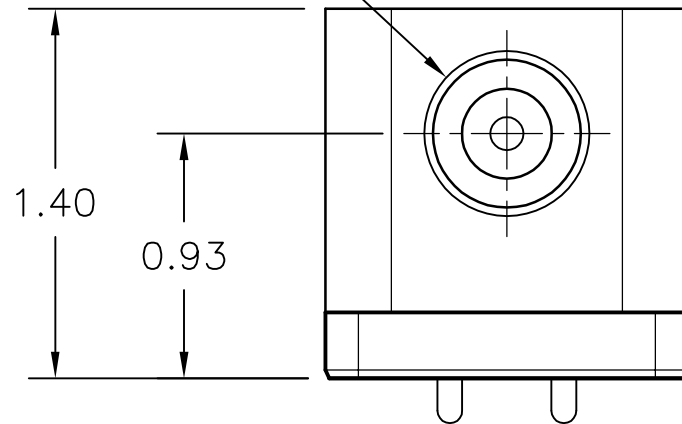


REV. A	AUTH. R.L.	DATE MM/DD/03	INITIAL RELEASE	APPROVED
REV. B	AUTH. R.L.	DATE 2/11/04	UPDATED DESIGN, DIMS: 1.10 WAS: 1.17; 1.40 WAS: 1.29; 0.93 WAS: 0.91	APPROVED
REV. C	AUTH. DRH	DATE 07/06/05	UPDATED DRAWING FORMAT	APPROVED

TYPE-N (F)
CONNECTOR



FLANGE
PER ORDER
(SEE TABLE)

PERFORMANCE SPECIFICATIONS

MODEL NUMBER: 750-253-FLANGE TYPE*
 WG SIZE: WRD750
 FREQ: 7.50 - 18.0 GHz
 MAX. VSWR: 1.25
 FLANGE TYPE: SEE TABLE BELOW

*FLANGE TYPES		
C1	COVER	ALT. THRU/TAPPED
C2	COVER	ALL TAPPED
C3	COVER	ALL THROUGH
G1	GROOVE	ALT. THRU/TAPPED
G2	GROOVE	ALL TAPPED
G3	GROOVE	ALL THROUGH

MATERIAL _	TREATMENT _	DRAWN J. EAGAN	DATE 1/30/02	
FINISH STD. ATM GRAY	MOD NO. 750-253-XX	CHECKED	DATE	
OUTLINE, WRD750 WG-COAX ADAPTER, TYPE-N		APPROVED	DATE	
		CAGE CODE: OR8N4	DO NOT SCALE DWG	
ADVANCED TECHNICAL MATERIALS, INC. 49 RIDER AVE., PATCHOGUE N.Y. 11772 TEL: (631) 289-0363 FAX: (631) 289-0358 http://www.atmmicrowave.com		UNLESS OTHERWISE NOTED DIMENSIONS ARE IN INCHES TOLERANCES ARE:	FRACTIONS ±1/64 DECIMALS ±.01 ANGLES ±1/2°	SHEET. 1/1
PROPRIETARY NOTICE: THE INFORMATION IN THIS DRAWING IS PROPRIETARY AND SHALL NOT BE USED OR DISCLOSED WITHOUT THE PRIOR WRITTEN CONSENT OF ATM, INC.		SCALE N.T.S.	DWG. NO. 5383W	REV. C