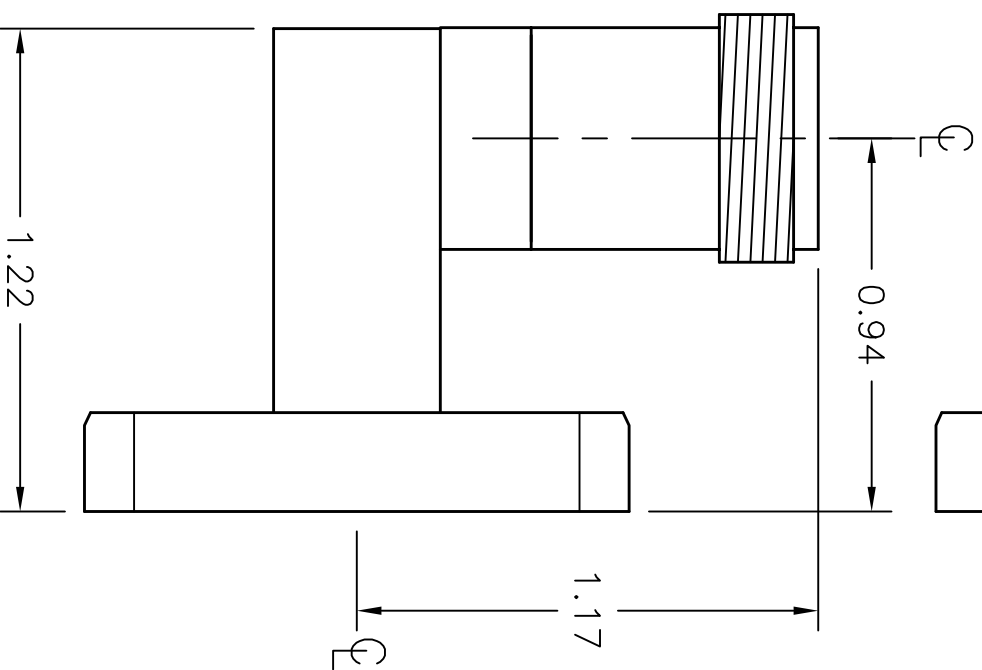
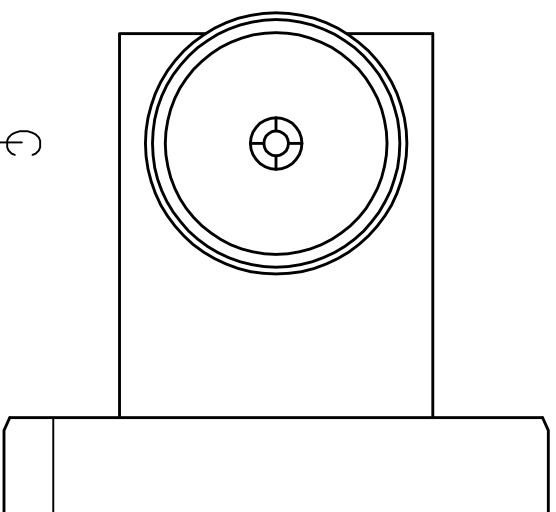


REV.	DATE	DESCRIPTION	APPROVED
A	5/1/03	INITIAL RELEASE	
B	5/7/03	OUTLINE REVISED TO ACCOMMODATE .230 CONN BOSS	



WG SIZE: WRD650
 FREQ: 6.50-18.0 GHz
 VSWR: 1.25 MAX.
 FINISH: STAINLESS STEEL EPOXY

C1	COVER	ALT. THRU/TAPPED
C2	COVER	ALL TAPPED
C3	COVER	ALL THROUGH
G1	GROOVE	ALT. THRU/TAPPED
G2	GROOVE	ALL TAPPED
G3	GROOVE	ALL THROUGH

MATERIAL	PER ORDER	TREATMENT	IRIDITE (ALUM.)	DRAWN	JLE	DATE
FINISH	ATM STD. GRAY	MOD NO.	650-253-XX	CHECKED		DATE

OUTLINE, WRD650
 WG-COAX ADAPTOR, TYPE-N

APPROVED	DATE
CAGE CODE: OR8N4	DO NOT SCALE DWG

ADVANCED TECHNICAL MATERIALS, INC.
 49 RIDER AVE., PATCHOQUE N.Y. 11772
 TEL: (631) 289-0386 FAX: (631) 289-0358
<http://www.atmmicrodave.com>



PROPRIETARY NOTICE:
 THE INFORMATION IN THIS DRAWING IS PROPRIETARY AND SHALL NOT BE REPRODUCED OR TRANSMITTED IN ANY FORM OR BY ANY MEANS, WITHOUT THE PRIOR WRITTEN CONSENT OF ATM, INC.

UNLESS OTHERWISE NOTED DIMENSIONS ARE IN INCHES
 TOLERANCES ARE:
 FRACTIONS ±1/64
 DECIMALS ±.01
 ANGLES ±1/2°

SCALE	2/1	DWG. NO.	5613	REV.	B
-------	-----	----------	------	------	---