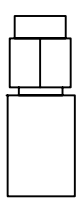


SLIDE CLAMP BODY ONTO CABLE
STRIP CABLE DOWN TO DIELECTRIC

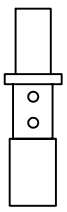


STRIP CABLE DOWN TO OUTER
SHIELD

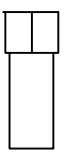
CONNECTOR BILL OF MATERIALS



COUPLING BODY



SLIDE CABLE FERRULE OVER
SHIELD & SOLDER



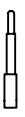
CLAMP BODY



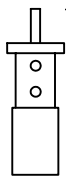
CABLE FERRULE



TRIM DIELECTRIC FLUSH TO CABLE
FERRULE



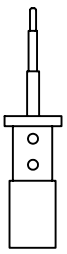
CENTER PIN



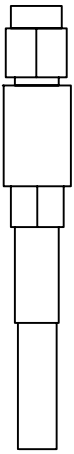
TRIM CENTER CONDUCTOR



FORWARD INSULATOR



SLIDE CENTER PIN INTO PLACE
& SOLDER



SLIDE FORWARD INSULATOR
OVER CENTER PIN & INSERT
COUPLING BODY & TIGHTEN
TO CLAMP BODY

MATERIAL	TREATMENT	DRAWN	ACAD	DATE	9/9/02
FINISH	MOD. NO.	CHECKED	MAB	DATE	9/9/02
CONNECTOR/CABLE ASSEMBLY CF-135-SMA		APPROVED		DATE	
ADVANCED TECHNICAL MATERIALS, INC. 49 RIDER AVE., PATCHOGUE N.Y. 11772 TEL: (631) 289-0386 FAX: (631) 289-0358 http://www.dtrmnicovgve.com		UNLESS OTHERWISE NOTED DIMENSIONS ARE IN INCHES TOLERANCES ARE:		FRACTIONS ±1/64 DECIMALS ±.01 ANGLES ±1/2°	SHEET: DO NOT SCALE DWG
			SCALE	DWG. NO.	5153
THE INFORMATION IN THIS DRAWING IS TO BE USED OR DISCLOSED WITHOUT THE PRIOR WRITTEN CONSENT OF ATM, INC.		ERROREBILITARY NOTICE		REV.	A