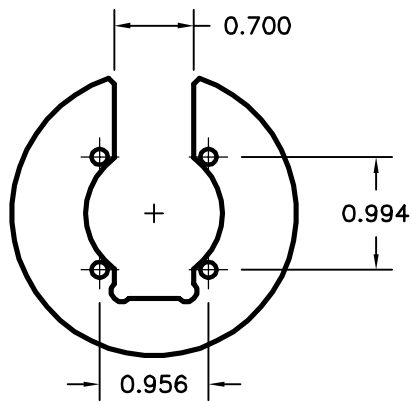
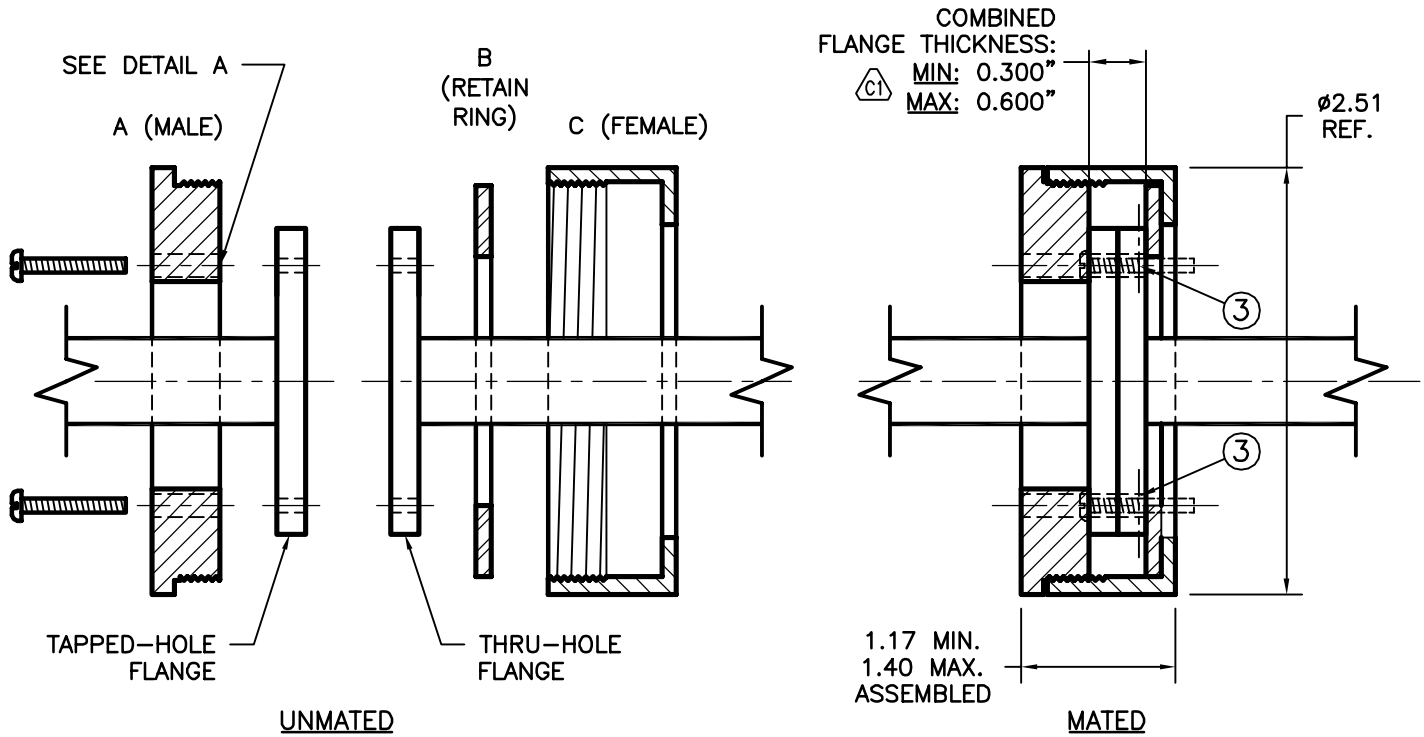


REV A	AUTH JLE	DATE 04/29/03	INITIAL RELEASE
REV B	AUTH RL	DATE 01/17/06	UPDATED TITLE BLOCK, NOTES
REV C	AUTH RL	DATE 10/17/06	Ⓢ1 CORRECTED TYPO; WAS MIN: 0.030", MAX. 0.060"



DETAIL A - HOLE CONFIGURATION
NOT TO SCALE

ASSEMBLY:

- ① MOUNT MALE HALF TO FLANGE WITH NYLON SCREWS PROJECTING FOR FLANGE ALIGNMENT.
- ② MOUNT B TO C - SNAP FIT.
- ③ CUT NYLON SCREWS TO LENGTH SO AS NOT TO PROTRUDE THROUGH MATING FLANGE.
- ④ MATE FLANGE FACES TOGETHER & SCREW TIGHT.

THIRD ANGLE PROJECTION:			APPROVALS	DATE		ADVANCED TECHNICAL MATERIALS, INC. TEL: (631) 289-0363 FAX: (631) 289-0358 www.atmmicrowave.com		THE INFORMATION IN THIS DRAWING IS PROPRIETARY AND SHALL NOT BE USED OR DISCLOSED WITHOUT THE PRIOR WRITTEN CONSENT OF ATM, INC. DO NOT SCALE DWG.				
UNLESS OTHERWISE NOTED, DIMENSIONS ARE IN INCHES, TOLERANCES ARE: FRACTIONS: ±1/64 ANGLES: ±1/2°			DRAWN RL	01/17/06		OUTLINE, QUICK DISCONNECT. WR51/WR62						
BASIC DIMENSION			CHKD.	APRVD.	SIZE A					CAGE CODE OR8N4	ATM DWG # 5611W	REVISION C
UNDER 6"	±.02	±.005	MATERIAL 6061 ALUM.	TREATMENT -	SCALE NONE					MODEL # SEE NOTES	SHEET 1/1	
6" - 12"	±.03	±.010	FINISH BLACK ANODIZE									
OVER 12"	±.06	±.015										