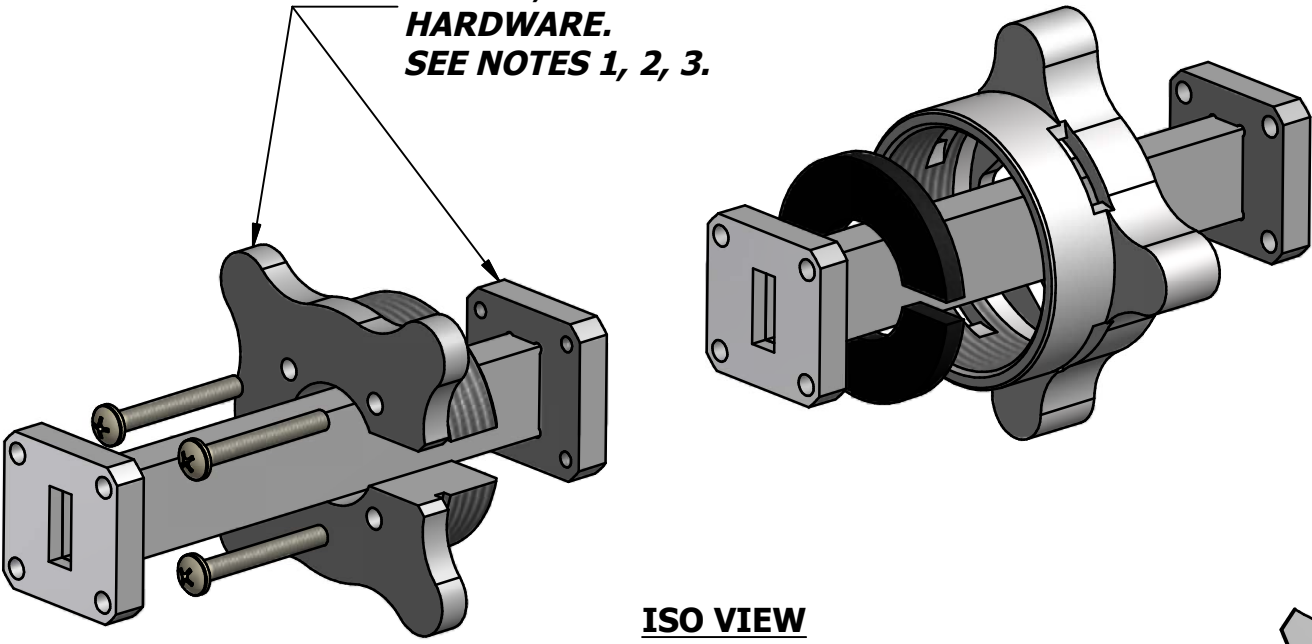
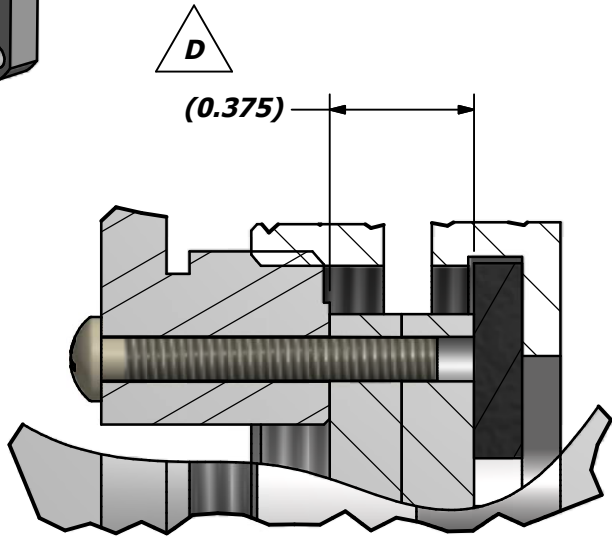


REVISION HISTORY			
REV	AUTH	DATE	DESCRIPTION
A	-	10/15/2007	INITIAL RELEASE
B	LM	08/19/14	ADDED MODEL WR34 REFERENCES.
C	RL	11/7/2014	LAYOUT UPDATE, NO CHANGES TO PARTS
D	M.R.	10/28/15	ADDED MOUNTING NOTE, DIAMETER DIMENSION, FLANGE DIMENSION

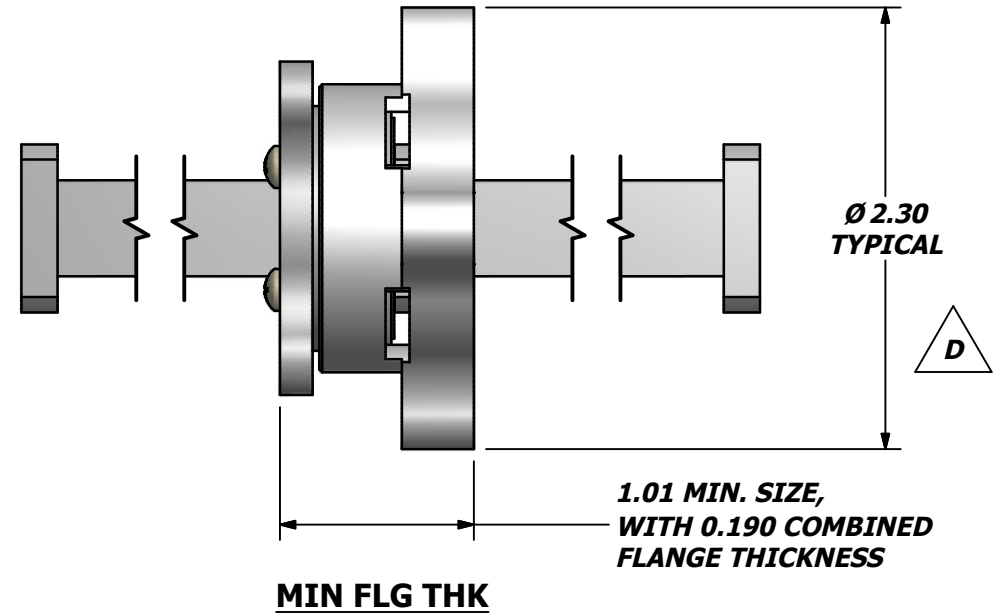
MOUNT MALE SECTION TO FLANGE, USING SUPPLIED HARDWARE. SEE NOTES 1, 2, 3.



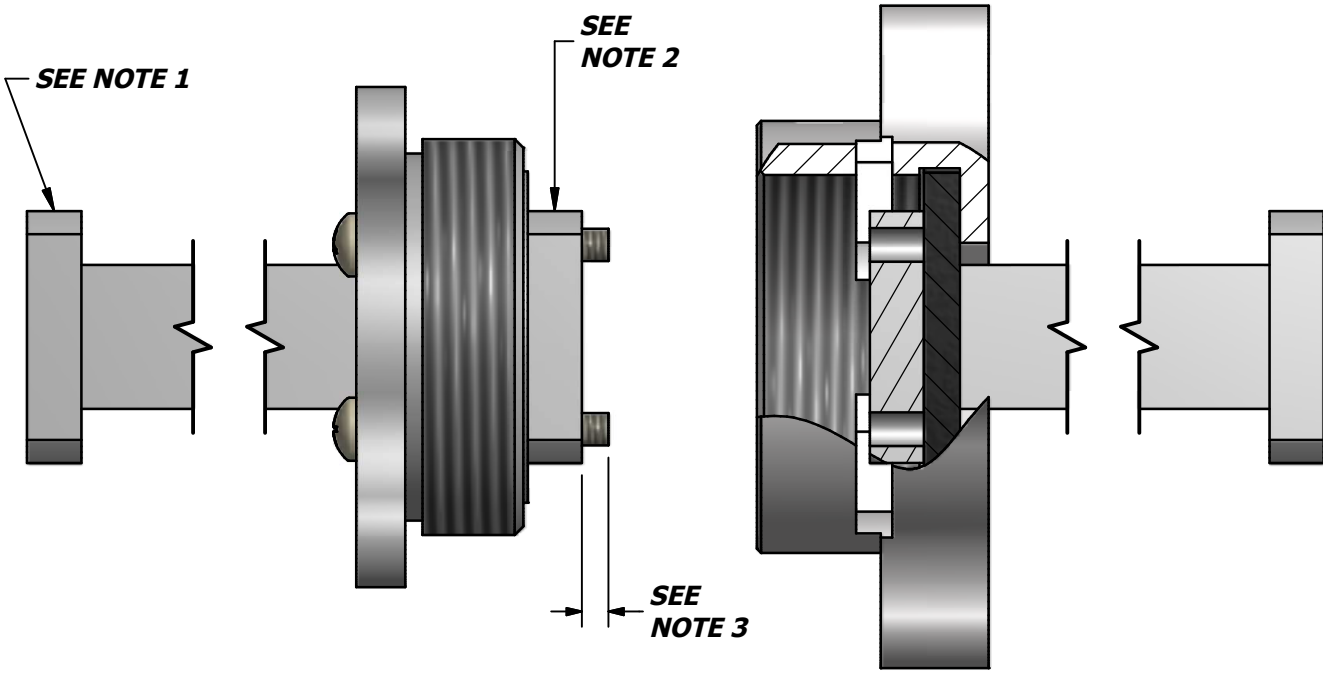
ISO VIEW



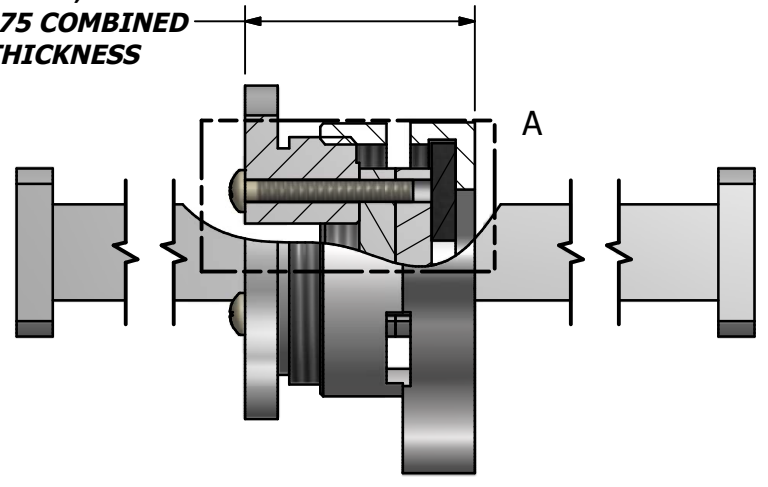
DETAIL A



MIN FLG THK




1.20 MAX. SIZE, WITH 0.375 COMBINED FLANGE THICKNESS



MAX FLG THK

- NOTES:**
- 1. WAVEGUIDE AND FLANGES ARE SUPPLIED BY CUSTOMER; DEPICTION HEREIN IS FOR ILLUSTRATION ONLY.**
 - 2. TAPPED HOLE FLANGE. COVER FLANGE WITH TAPPED HOLES, COVER-GROOVE FLANGE WITH TAPPED HOLES, OR CHOKE-STYLE FLANGE ARE COMMON EXAMPLES.**
 - 3. CUT NYLON SCREWS TO LENGTH. PROTRUSION OF NYLON SCREW PAST FLANGE FACE MUST BE NO GREATER THAN THICKNESS OF THE MATING FLANGE.**

USED ON	QTY	NEXT ASSY	THIRD ANGLE PROJECTION:	APPROVALS	DATE	 ADVANCED TECHNICAL MATERIALS, INC. TEL: (631) 289-0363 FAX: (631) 289-0358 www.atmmicrowave.com			THE INFORMATION IN THIS DRAWING IS PROPRIETARY AND SHALL NOT BE USED OR DISCLOSED WITHOUT THE PRIOR WRITTEN CONSENT OF ATM, INC. DO NOT SCALE DWG.	
			UNLESS OTHERWISE NOTED, DIMENSIONS ARE IN INCHES, TOLERANCES ARE: FRACTIONS: ±1/64 ANGLES: ±1/2° DECIMALS 2 PLACE 3 PLACE ±.01 ±.005 MACHINED FINISH 63 ✓ OR BETTER	DRAWN RL 11/7/2014 CHKD. APRVD. MATERIAL TREATMENT FINISH			OUTLINE, QUICK CONNECT WR42, HIGH TORQUE		SIZE B CAGE CODE 0R8N4 MODEL # QD-42HQ	ATM DWG # 16359 REVISION D SHEET 1 OF 1