

REVISION HISTORY			
REV	AUTH	DATE	DESCRIPTION
A	RL	11/2014	INITIAL RELEASE
B	M.R.	10/28/15	ADDED MOUNTING NOTE, DIAMETER DIMENSION

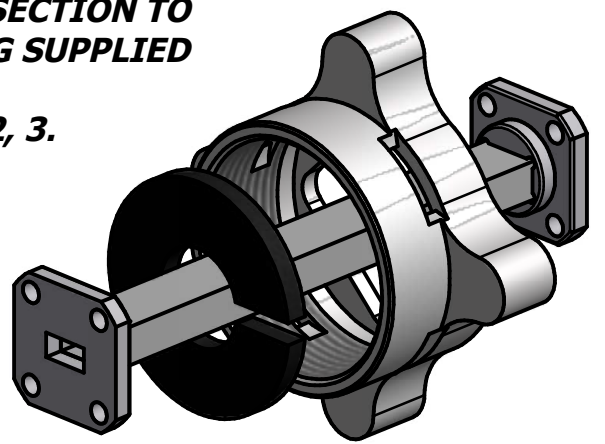
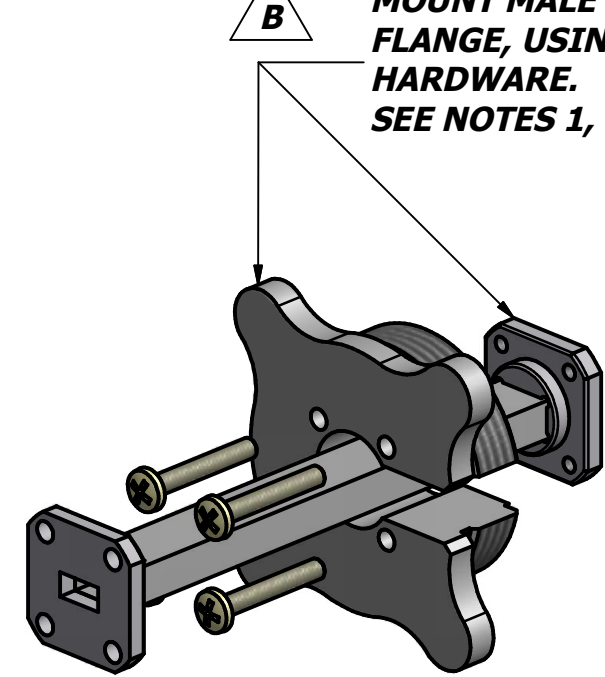
4

3

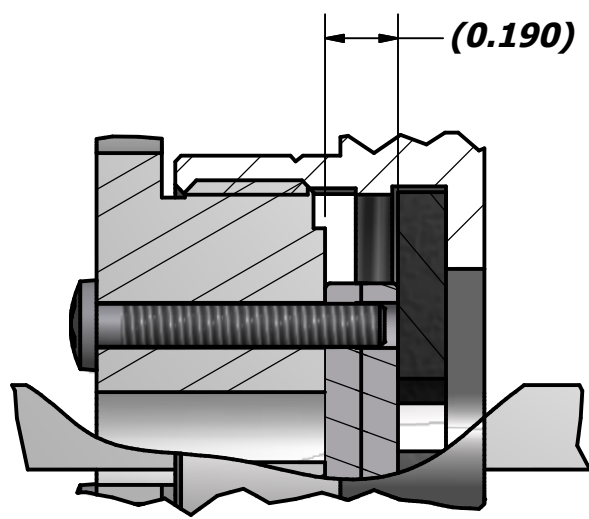
2

1

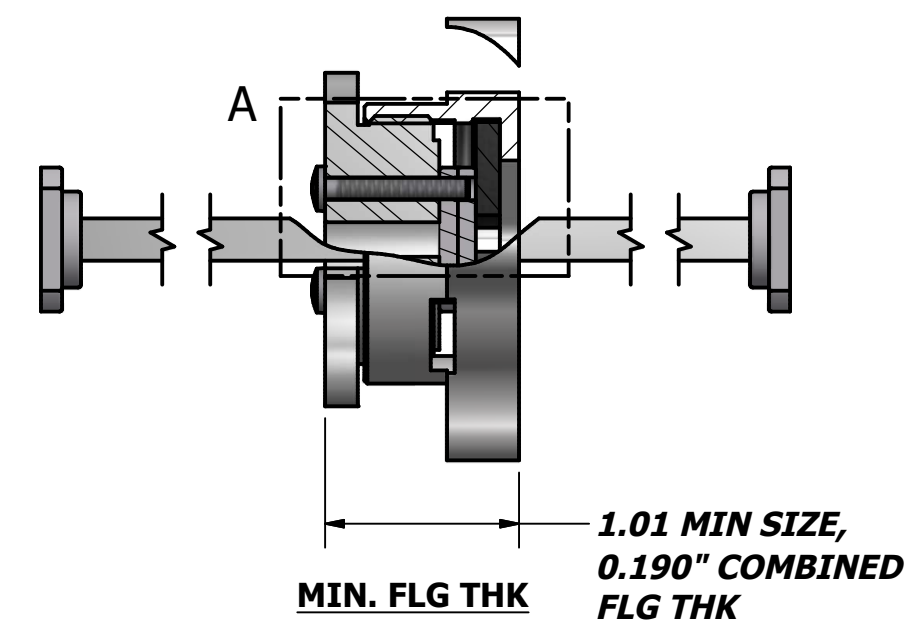
**MOUNT MALE SECTION TO FLANGE, USING SUPPLIED HARDWARE. SEE NOTES 1, 2, 3.**



ISO VIEW



DETAIL A



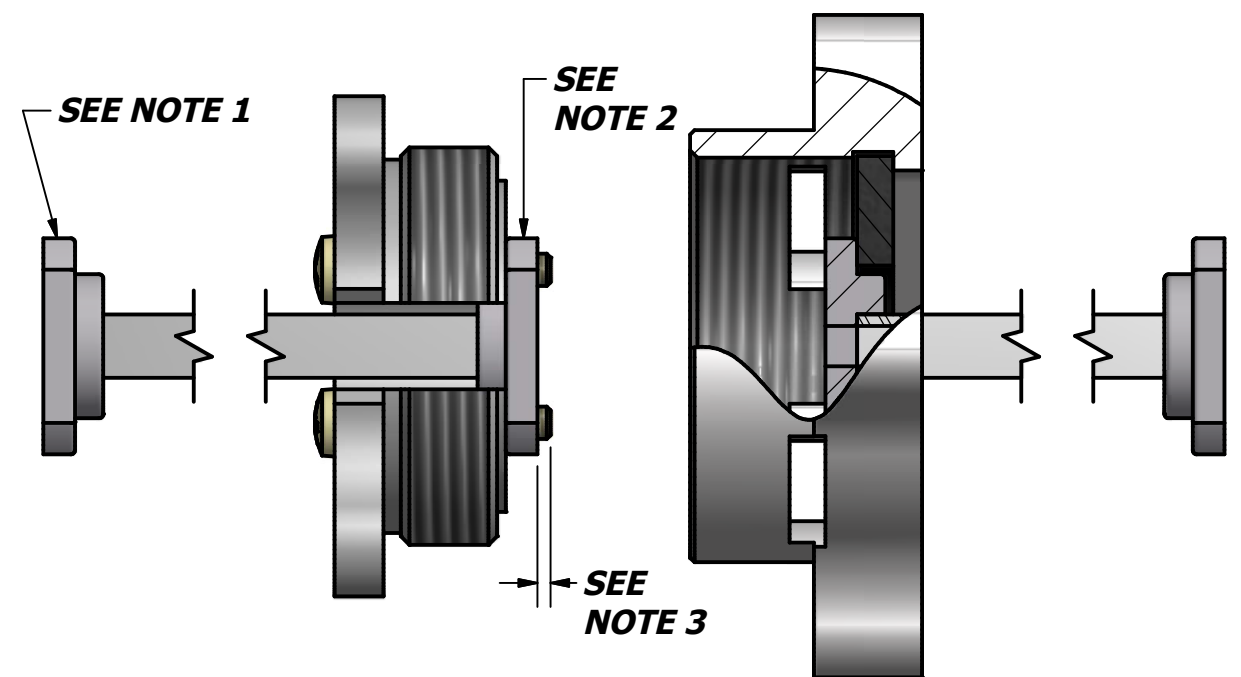
MIN. FLG THK

1.01 MIN SIZE,  
0.190" COMBINED  
FLG THK

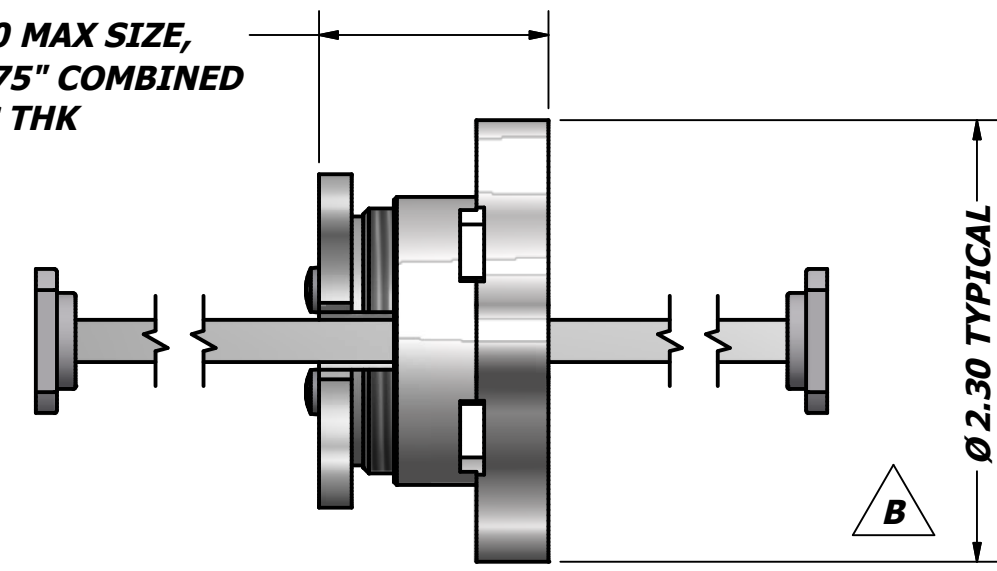
SEE NOTE 1

SEE NOTE 2

SEE NOTE 3



1.20 MAX SIZE,  
0.375" COMBINED  
FLG THK



MAX. FLG THK

Ø 2.30 TYPICAL

**NOTES:**

1. WAVEGUIDE AND FLANGES ARE SUPPLIED BY CUSTOMER; DEPICTION HEREIN IS FOR ILLUSTRATION ONLY.
2. TAPPED HOLE FLANGE. COVER FLANGE WITH TAPPED HOLES, COVER-GROOVE FLANGE WITH TAPPED HOLES, OR CHOKE-STYLE FLANGE ARE COMMON EXAMPLES.
3. CUT NYLON SCREWS TO LENGTH. PROTRUSION OF NYLON SCREW PAST FLANGE FACE MUST BE NO GREATER THAN THICKNESS OF THE MATING FLANGE.

USED ON	QTY	NEXT ASSY	THIRD ANGLE PROJECTION:	APPROVALS	DATE	<b>ADVANCED TECHNICAL MATERIALS, INC.</b> TEL: (631) 289-0363 FAX: (631) 289-0358 www.atmmicrowave.com THE INFORMATION IN THIS DRAWING IS PROPRIETARY AND SHALL NOT BE USED OR DISCLOSED WITHOUT THE PRIOR WRITTEN CONSENT OF ATM, INC. DO NOT SCALE DWG.
QD-34HQ-MFDC	1		UNLESS OTHERWISE NOTED, DIMENSIONS ARE IN INCHES, TOLERANCES ARE: FRACTIONS: ±1/64 ANGLES: ±1/2°	DRAWN RL 11/2014		
			DECIMALS 2 PLACE 3 PLACE	CHKD.		
			±.01 ±.005	APRVD.		
			MACHINED FINISH 63 ✓ OR BETTER	MATERIAL		<b>OUTLINE, QUICK CONNECT</b> <b>WR34, HI TORQUE</b>
				TREATMENT		SIZE B CAGE CODE 0R8N4 ATM DWG # 16360 REVISION B MODEL # QD-34HQ SHEET 1

4

3

2

1