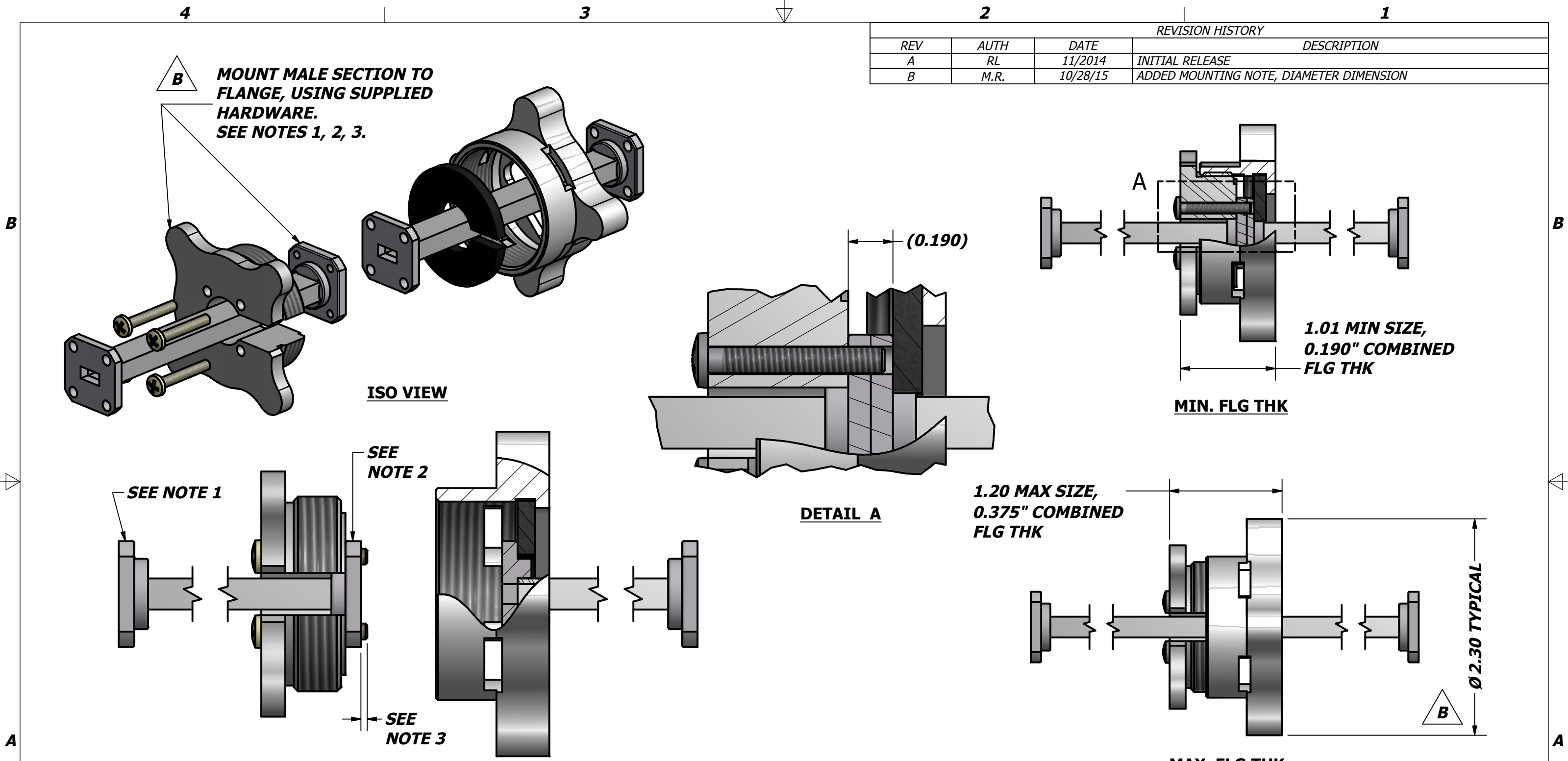


REVISION HISTORY			
REV	AUTH	DATE	DESCRIPTION
A	RL	11/2014	INITIAL RELEASE
B	M.R.	10/28/15	ADDED MOUNTING NOTE, DIAMETER DIMENSION



- NOTES:**
1. WAVEGUIDE AND FLANGES ARE SUPPLIED BY CUSTOMER; DEPICTION HEREIN IS FOR ILLUSTRATION ONLY.
 2. TAPPED HOLE FLANGE. COVER FLANGE WITH TAPPED HOLES, COVER-GROOVE FLANGE WITH TAPPED HOLES, OR CHOKE-STYLE FLANGE ARE COMMON EXAMPLES.
 3. CUT NYLON SCREWS TO LENGTH. PROTRUSION OF NYLON SCREW PAST FLANGE FACE MUST BE NO GREATER THAN THICKNESS OF THE MATING FLANGE.

USED ON	QTY	NEXT ASSY	THIRD ANGLE PROJECTION:	APPROVALS	DATE	ADVANCED TECHNICAL MATERIALS, INC. TEL: (631) 289-0363 FAX: (631) 289-0358 www.atmmicrowave.com			THE INFORMATION IN THIS DRAWING IS PROPRIETARY AND SHALL NOT BE USED OR DISCLOSED WITHOUT THE PRIOR WRITTEN CONSENT OF ATM, INC. DO NOT SCALE DWG.	
QD-28HQ-MFDC	1		UNLESS OTHERWISE NOTED, DIMENSIONS ARE IN INCHES. TOLERANCES ARE: FRACTIONS: ±1/64 ANGLES: ±1/2° DECIMALS 2 PLACE 3 PLACE ±.01 ±.005	DRAWN RL 11/2014		OUTLINE, QUICK CONNECT WR28, HI TORQUE			SIZE B	REVISION B
				CHKD.					CAGE CODE 0R8N4	ATM DWG # 16415
			MACHINED FINISH 63 ✓ OR BETTER	APRVD.		MODEL # QD-28HQ				