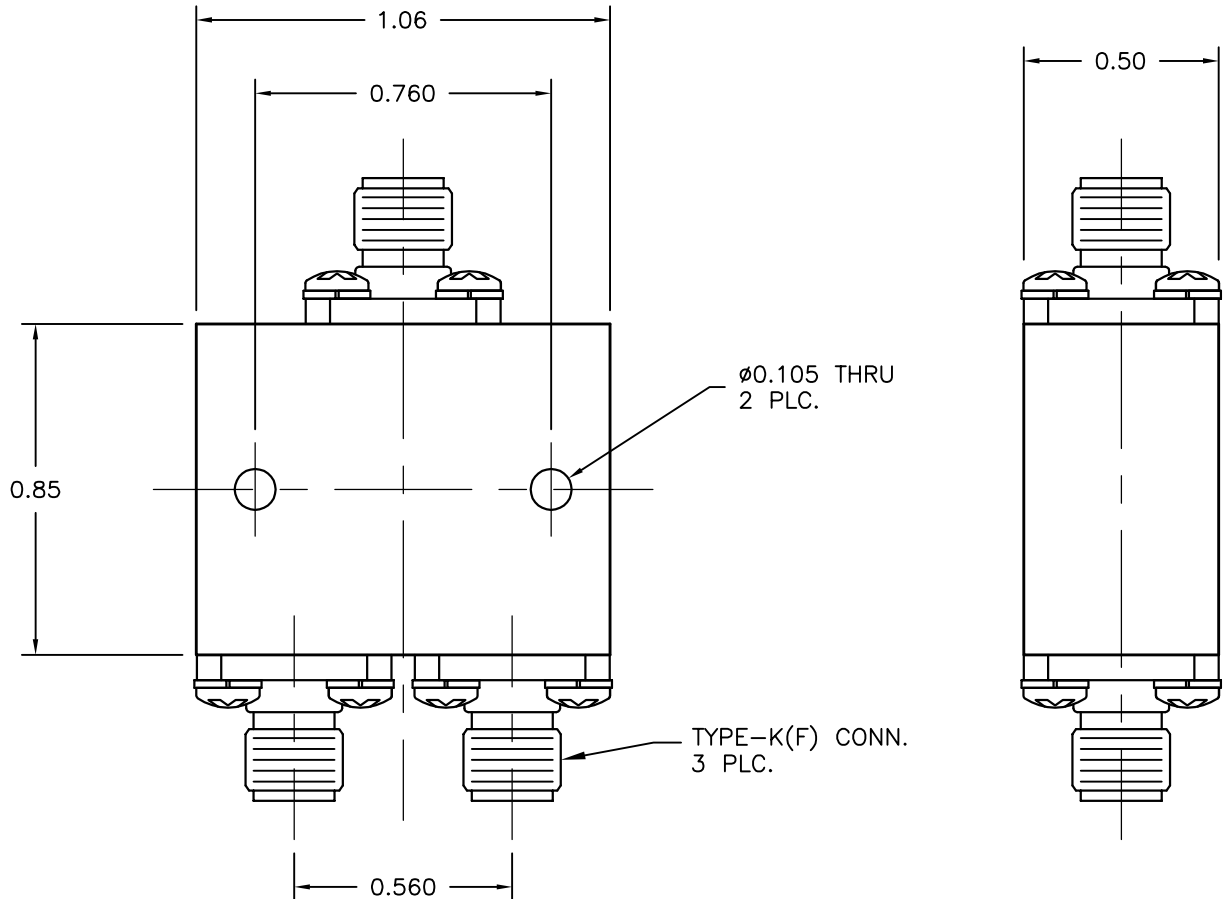


REV A	AUTH M.R.	DATE 07/12/13	INITIAL RELEASE
REV B	AUTH M.R.	DATE 02/17/15	MOUNTING HOLE LOCATION CORRECTED. PER ECN 02-17-15-01



MODEL SPECIFICATIONS

MECHANICAL

MODEL NUMBER: P21Ka
 MATERIAL: 6061/T-6 ALUM.
 BODY: STAINLESS STEEL
 CONNECTORS: UNIQUE CORROSION RESISTANT
 FINISH: 316 STAINLESS STEEL EPOXY COATING
 SPECIAL, PER CUSTOMER DWG.

ELECTRICAL

FREQ. RANGE: 18.3 - 31.0 GHz
 VSWR MAX.: 1.6:1
 IN: 1.6:1
 OUT: 1.6:1
 ISOLATION: 18dB
 INSERTION LOSS: 1.5dB
 AMP. BALANCE ±.40 dB
 PHASE BALANCE ±4.0 dB

THIRD ANGLE PROJECTION:		APPROVALS	DATE	ADVANCED TECHNICAL MATERIALS, INC. TEL: (631) 289-0363 FAX: (631) 289-0358 www.atmmicrowave.com		<small>THE INFORMATION IN THIS DRAWING IS PROPRIETARY AND SHALL NOT BE USED OR DISCLOSED WITHOUT THE WRITTEN CONSENT OF ATM, IN DO NOT SCALE DWG.</small>		
UNLESS OTHERWISE NOTED, DIMENSIONS ARE IN INCHES. TOLERANCES ARE: FRACTIONS: ±1/64 ANGLES: ±1/2° MACHINED FINISH 63 ✓ OR BETTER		DRAWN M.R.	07/12/13	OUTLINE, P21Ka 2-WAY POWER DIVIDER		REVISION B		
DECIMALS 2 PLACE 3 PLACE		CHKD.				SIZE A	CAGE CODE 0R8N4	ATM DWG # 15075
±.01 ±.005		APRVD.				SCALE 2 : 1	MODEL # P21Ka	SHEET 1/1
		MATERIAL SEE NOTES						
		TREATMENT -						
		FINISH SEE NOTES						