

**NOTES:**

1. MOUNT MALE COUPLER TO FLANGE WITH SCREWS PROJECTING FOR ALIGNMENT. FLANGE MUST BE TAPPED.

2. MOUNT RETAINER RING TO FEMALE COUPLER, SNAP FIT.

3. CUT NYLON SCREWS TO LENGTH SO AS NOT TO PROTRUDE THROUGH MATING FLANGE.

4. MATE FLANGES AND SCREW TIGHT.

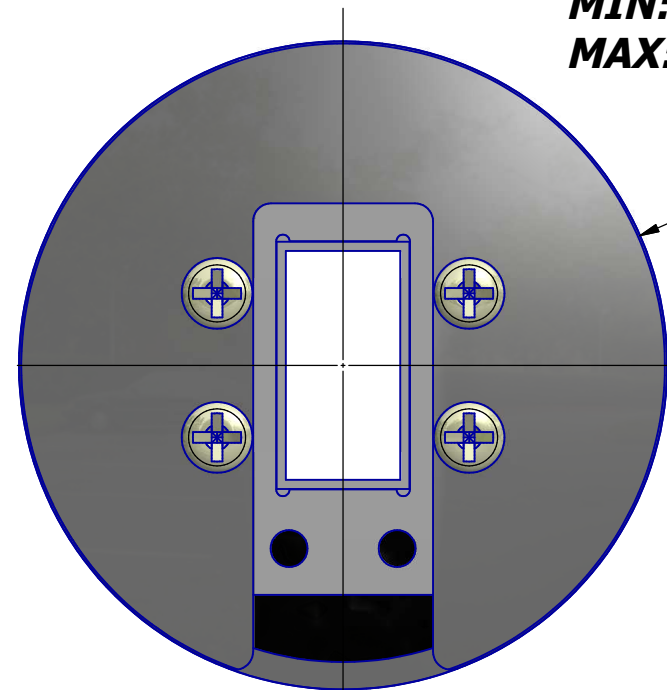
**REVISION HISTORY**

REV	AUTH	DATE	DESCRIPTION
A	BF	10-4-12	INITIAL RELEASE
B	BF	10-12-12	CORRECT CALLOUT FROM 75 TO 159

**COMBINED FLANGE THICKNESS**

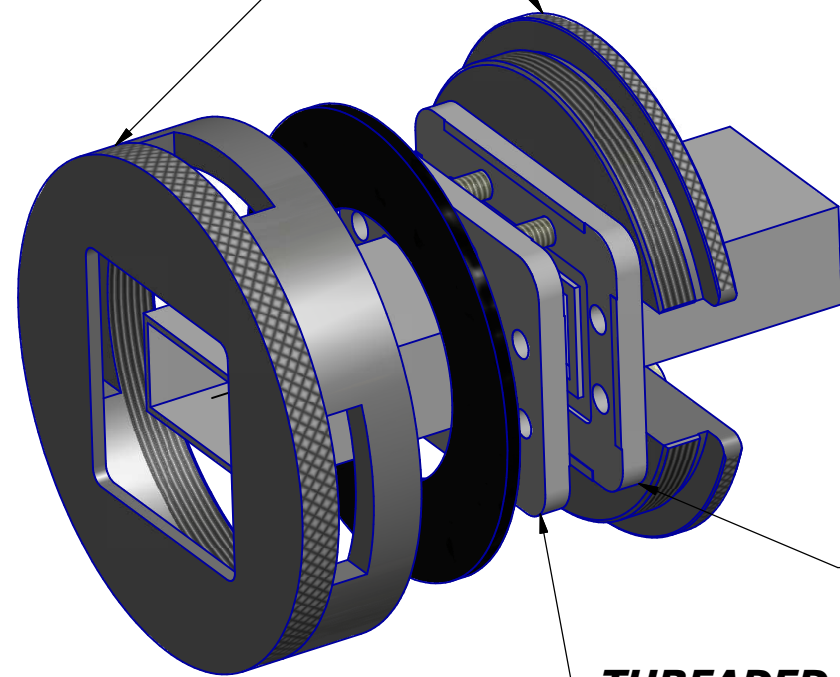
MIN: .500

MAX: .750



Ø4.50

**KNURLED SURFACE**



**THREADED FLANGE**

**SHOWN WITH WR159 CPRG FLANGE**

**MALE COUPLER**

**WR159 WG**

.613

**RETAINING RING**

.125

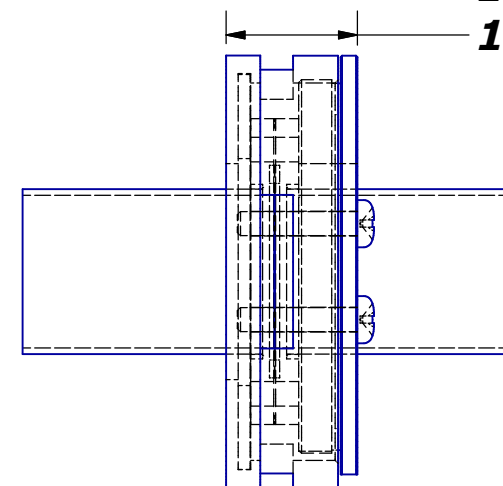
4.50


**FEMALE COUPLER**

1.166

**1.62 MAX ASSEMBLED**

**1.37 MIN**



MODEL NO	QTY	NEXT ASSY	THIRD ANGLE PROJECTION:	APPROVALS	DATE	 <b>ADVANCED TECHNICAL MATERIALS, INC.</b> TEL: (631) 289-0363 FAX: (631) 289-0358 www.atmmicrowave.com			THE INFORMATION IN THIS DRAWING IS PROPRIETARY AND SHALL NOT BE USED OR DISCLOSED WITHOUT THE PRIOR WRITTEN CONSENT OF ATM, INC. DO NOT SCALE DWG.		
			UNLESS OTHERWISE NOTED, DIMENSIONS ARE IN INCHES, TOLERANCES ARE: FRACTIONS: ±1/64 ANGLES: ±1/2° DECIMALS 2 PLACE    3 PLACE ±.01    ±.005	DRAWN BF 10-4-12 CHKD. APRVD.		<b>OUTLINE, WR159 QUICK DISCONNECT</b>			SIZE B CAGE CODE OR8N4 MODEL #	ATM DWG # 14367 <b>QD/159</b>	REVISION B SHEET 1 OF 1
			MACHINED FINISH 63 ✓ OR BETTER	MATERIAL 6061-T6 AL ALY							
				TREATMENT							
				FINISH BLACK ANODIZE							