

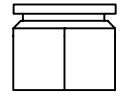
CONNECTOR BILL OF MATERIALS

REV. A	DATE 3/30/05	PRODUCTION RELEASE	APPROVED MAB
--------	--------------	--------------------	--------------

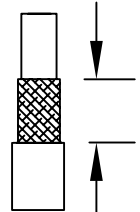
CABLE STRIPPING & CONNECTOR ASSEMBLY



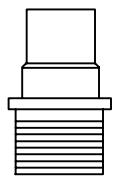
SLIDE REAR CLAMP BODY ONTO CABLE
STRIP CABLE DOWN TO DIELECTRIC



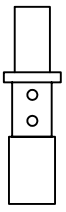
COUPLING NUT ASSY



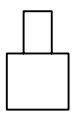
STRIP CABLE DOWN TO OUTER
SHIELD



MID BODY



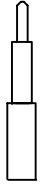
SLIDE CABLE FERRULE OVER
SHIELD, USE A THIN RUBBER BAND
WRAPPED AROUND SHIELD TO
HOLD WIRES IN PLACE.



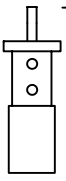
FORWARD INSULATOR



TRIM DIELECTRIC FLUSH TO THE
FACE OF THE CABLE FERRULE &
CUT CENTER CONDUCTOR TO LENGTH



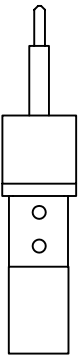
MALE N PIN



INSTALL CENTER CONTACT OVER CENTER CONDUCTOR
& SOLDER.



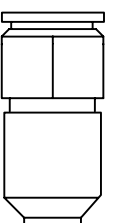
DIELECTRIC RING



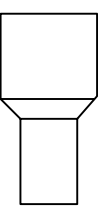
INSTALL DIELECTRIC RING



CABLE FERRULE



INSTALL FORWARD INSULATOR OVER MALE PIN
INSTALL MID BODY INTO COUPLING NUT ASSEMBLY
SLIDE REAR CLAMP BODY FORWARD AND THREAD
MID BODY TO REAR CLAMP BODY, TORQUE TO 30 IN/LBS



REAR CLAMP BODY

CONNECTOR/CABLE
ASSEMBLY NM-300-1

MATERIAL	TREATMENT	DRAWN	ACAD	DATE	9/9/02
FINISH	MOD. NO.	CHECKED	MAB	DATE	3/30/05
		APPROVED		DATE	
		CAGE CODE: ORBN4	DO NOT SCALE DWG		

CABLE ASSEMBLY
NOTE: NO EXCESS SOLDER SHOULD BE EXPOSED ON THE CABLE
FERRULE, OR THE CONNECTOR PIN. THIS COULD EFFECT ELECTRICAL
PERFORMANCE, OR MECHANICAL ASSEMBLY.

ADVANCED TECHNICAL MATERIALS, INC.
49 RIDER AVE., PATCHOGUE N.Y. 11772
TEL: (631) 289-0366 FAX: (631) 289-0358
<http://www.dtrmnicovve.com>

UNLESS OTHERWISE NOTED DIMENSIONS ARE IN INCHES TOLERANCES ARE:

FRACTIONS	DECIMALS	ANGLES
±1/64	±.01	±1/2°
		±.005

SCALE

DWG. NO. 6674-1

REV. A



THE INFORMATION IN THIS DRAWING IS TO BE USED OR DISCLOSED WITHOUT THE PRIOR WRITTEN CONSENT OF ATM, INC.