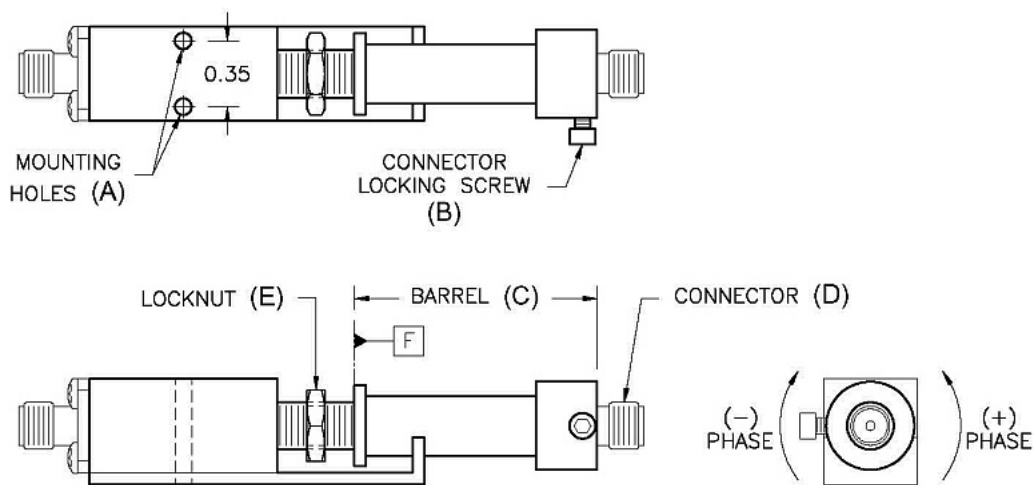




**ADVANCED TECHNICAL MATERIALS, INC.**  
49 Rider Avenue, Patchogue NY 11772  
Tel: (631) 289-0363 Fax: (631)-0358  
<http://www.atmmircrowave.com>

## Instructions for operation of Atm Inc. Line Stretcher P/N P1917



- Step 1** Mount Line Stretcher using Mounting Holes provided. (fig. A)
- Step 2** Tighten Connector Locking Screw (fig. B). This will secure Barrel (fig. C) to Connector (fig. D). Mate Connectors @ (fig. D), torque to rated value.
- Step 3** Loosen Connector Locking Screw. (fig. B)
- Step 4** Adjust Line Stretcher to desired phase by rotating Barrel. Clockwise rotation decreases phase.
- Step 5** When desired phase is achieved, secure setting by tightening Locknut (fig. E) against surface "F" of Barrel. (fig. C)

Important notes about Connector Locking Screw (fig. B):  
This screw should *only* be tightened while mating and un-mating connectors @ (fig. D).  
Always loosen screw prior to phase adjustment.