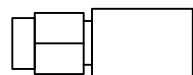


REV.

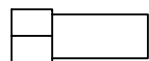
DATE

APPROVED

CONNECTOR BILL OF MATERIALS



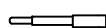
COUPLING BODY



CLAMP BODY



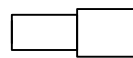
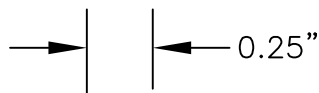
CABLE FERRULE



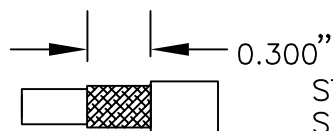
CENTER PIN



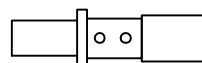
REAR INSULATOR



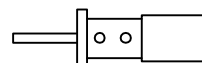
SLIDE CLAMP BODY ONTO CABLE
STRIP CABLE DOWN TO DIELECTRIC



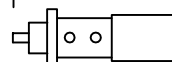
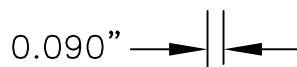
STRIP CABLE DOWN TO OUTER
SHIELD



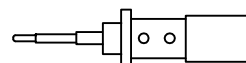
SLIDE CABLE FERRULE OVER
SHIELD & SOLDER



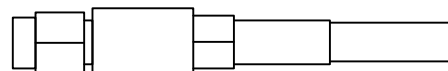
TRIM DIELECTRIC FLUSH TO CABLE
FERRULE




SLIDE REAR INSULATOR ON SMALL HOLE
TOWARDS CABLE FERRULE
TRIM CENTER CONDUCTOR



SLIDE CENTER PIN INTO PLACE
& SOLDER



ASSEMBLE COUPLING BODY & TIGHTEN
TO CLAMP BODY

MATERIAL	TREATMENT	DRAWN	ACAD	DATE	9/9/02
FINISH	MOD NO.	CHECKED	MAB	DATE	9/9/02
CONNECTOR/CABLE KM-135 ASSEMBLY				APPROVED	DATE
				CAGE CODE: OR8N4	DO NOT SCALE DWG
ADVANCED TECHNICAL MATERIALS, INC. 49 RIDER AVE., PATCHOGUE N.Y. 11772 TEL: (631) 289-0386 FAX: (631) 289-0358 http://www.atmmicrowave.com		UNLESS OTHERWISE NOTED DIMENSIONS ARE IN INCHES TOLERANCES ARE:			SHEET.
 <small>PROPRIETARY NOTICE: THE INFORMATION IN THIS DRAWING IS PROPRIETARY AND SHALL NOT BE USED OR DISCLOSED WITHOUT THE PRIOR WRITTEN CONSENT OF ATM, INC.</small>		FRACTIONS ±1/64		DECIMALS ±.01	ANGLES ±1/2°
		SCALE	DWG. NO.	5153	REV.