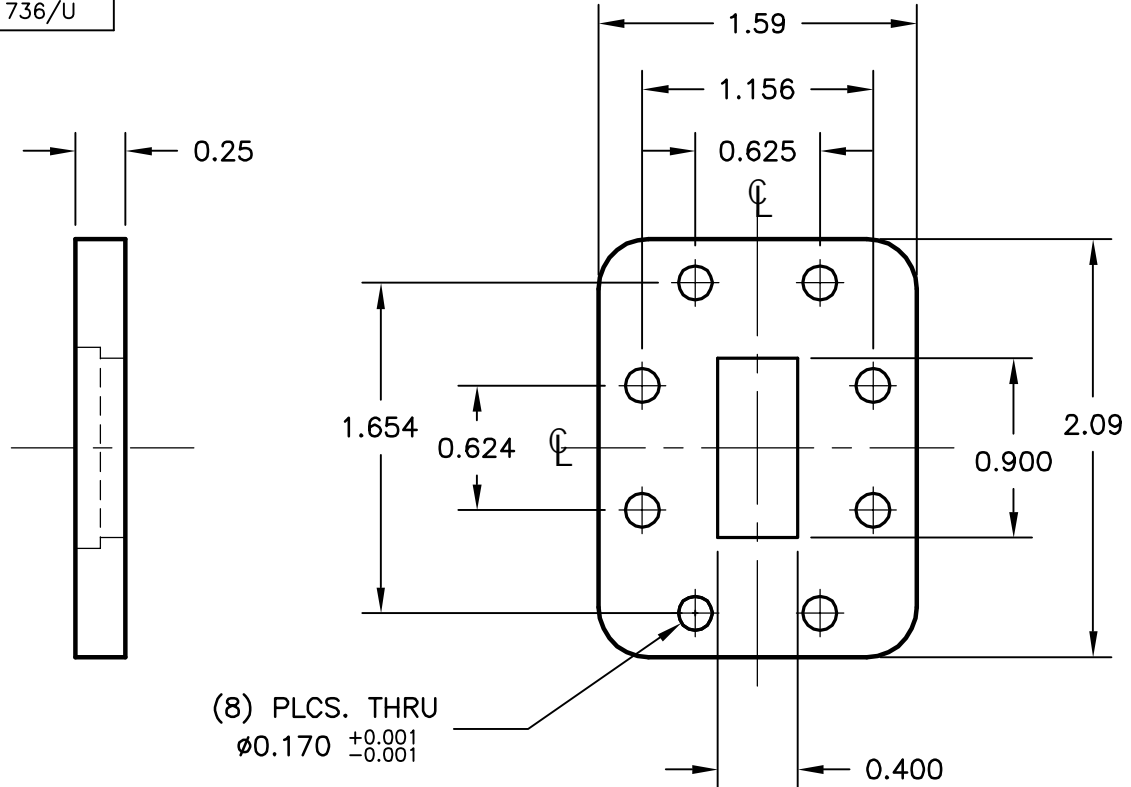


EQUIVALENT TO:

MATERIAL	MIL F-3922	UG TYPE
ALUMINUM	52-022	UG 1483/U
		UG 1737/U
BRASS	52-021	UG 1478/U
		UG 1736/U

REV. -	AUTH. DRH	DATE 12/15/04	INITIAL RELEASE	APPROVED
REV. A	AUTH. RL	DATE 05/23/05	NOTES UPDATED: MIL EQUIV. ADDED, NOTES REVISED	APPROVED



NOTES:

- ALL DRAWINGS INDICATE APPLICABLE MATING DIMENSIONS. NON INTERFACE VARIABLES SUCH AS THICKNESS, CORRAL DIMENSIONS, AND MATERIALS MAY VARY DEPENDING ON PRODUCT CONFIGURATION.

MATERIAL	SEE NOTES	TREATMENT	-	DRAWN	DRH	DATE	12/15/04		
FINISH	-	MOD NO.	-	CHECKED		DATE			
WR90 FLANGE, STANDARD CPR90F						APPROVED	DATE		
						CAGE CODE: OR8N4	DO NOT SCALE DWG		
ADVANCED TECHNICAL MATERIALS, INC. 49 RIDER AVE., PATCHOGUE N.Y. 11772 TEL: (631) 289-0363 FAX: (631) 289-0358 http://www.atmmicrowave.com				UNLESS OTHERWISE NOTED DIMENSIONS ARE IN INCHES		FRACTIONS	DECIMALS	ANGLES	SHEET.
				TOLERANCES ARE:		±1/64	±.01	±1/2°	1/1
						SCALE	DWG. NO.	REV.	
				N.T.S.		7068W		A	