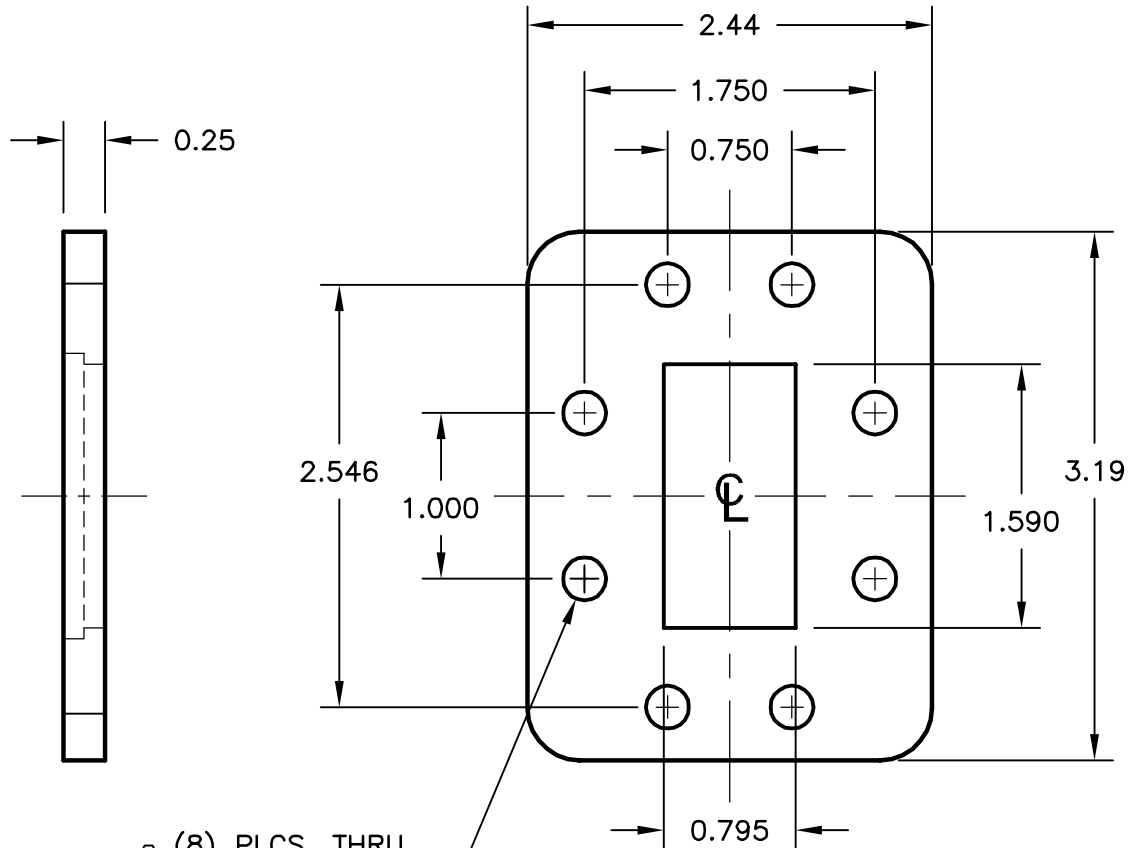


REV.	AUTH.	DATE	INITIAL RELEASE	APPROVED
-	DRH	12/15/04		
REV.	AUTH.	DATE	△A1 HOLE TOLERANCE CORRECTED, WAS: ±.000	APPROVED
A	RL	12/12/05		

EQUIVALENT TO:

CPR159F	MATERIAL	MIL F-3922-	U/G TYPE
	ALUMINUM	52-016	UG 1731/U
	BRASS	52-015	UG 1730/U



△A1 (8) PLCS. THRU
 $\phi 0.256 \begin{matrix} +0.006 \\ -0.000 \end{matrix}$

NOTES:

1. FLANGE SHOWN IS ATM STANDARD FLANGE FOR WAVEGUIDE TYPE NOTED. OTHER FLANGE TYPES ARE AVAILABLE UPON REQUEST.
2. ALL DRAWINGS INDICATE APPLICABLE MATING DIMENSIONS. NON INTERFACE VARIABLES SUCH AS THICKNESS, CORRAL DIMENSIONS, AND MATERIALS MAY VARY DEPENDING ON PRODUCT CONFIGURATION.

MATERIAL	SEE NOTES	TREATMENT	-	DRAWN	DRH	DATE	12/15/04
FINISH	-	MOD NO.	-	CHECKED		DATE	
WR159 FLANGE, STANDARD CPR159F						APPROVED	DATE
						CAGE CODE: ORB4	DO NOT SCALE DWG
ADVANCED TECHNICAL MATERIALS, INC. 49 RIDER AVE., PATCHOGUE N.Y. 11772 TEL: (631) 289-0363 FAX: (631) 289-0358 http://www.atmmicrowave.com				UNLESS OTHERWISE NOTED DIMENSIONS ARE IN INCHES TOLERANCES ARE:		FRACTIONS ±1/64 DECIMALS ±.03 ANGLES ±1/2°	SHEET. 1/1
PROPRIETARY NOTICE: THE INFORMATION IN THIS DRAWING IS PROPRIETARY AND SHALL NOT BE USED OR DISCLOSED WITHOUT THE PRIOR WRITTEN CONSENT OF ATM, INC.				SCALE N.T.S.	DWG. NO. 7060W	REV. A	