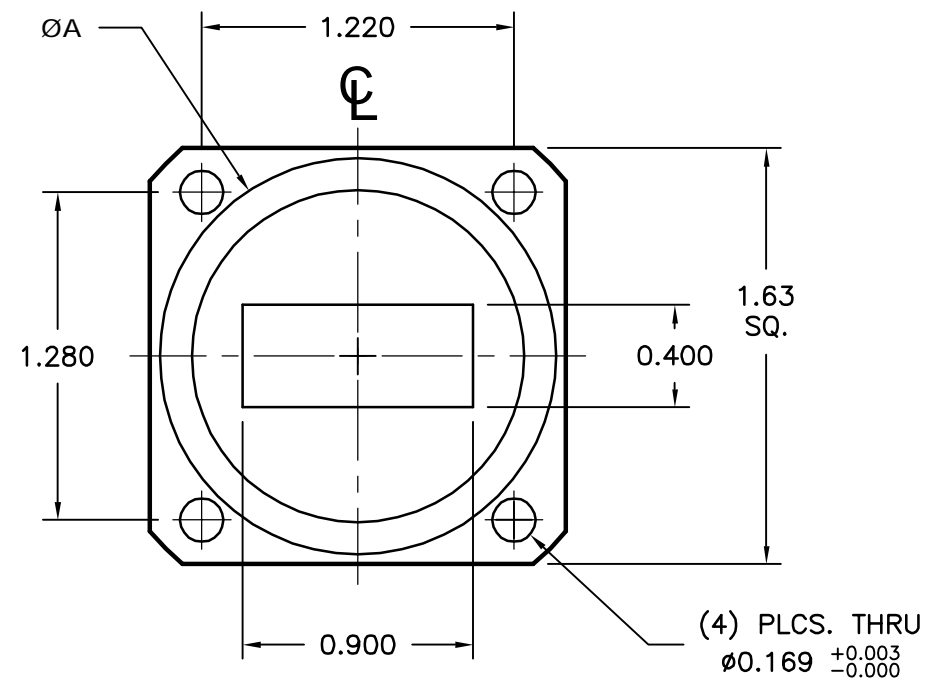
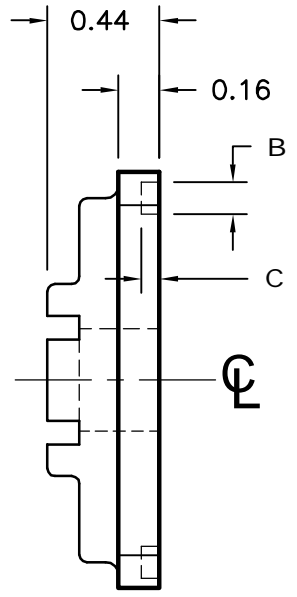


MATERIAL	'A'	'B'	'C'
ALUMINUM	1.548	.125	.064
BRASS	1.554	.131	.070



NOTES:

1. ALL DRAWINGS INDICATE APPLICABLE MATING DIMENSIONS. NON INTERFACE VARIABLES SUCH AS THICKNESS, CORRAL DIMENSIONS, AND MATERIALS MAY VARY DEPENDING ON PRODUCT CONFIGURATION.

MATERIAL ALUM./BRASS	TREATMENT -	DRAWN RL	DATE 09/28/05
FINISH -	MOD NO. -	CHECKED	DATE
WR90 FLANGE, COVER-GROOVE			APPROVED
			DATE
CAGE CODE: OR8N4			DO NOT SCALE DWG
ADVANCED TECHNICAL MATERIALS, INC. 49 RIDER AVE., PATCHOGUE N.Y. 11772 TEL: (631) 289-0363 FAX: (631) 289-0358 http://www.atmmicrowave.com		UNLESS OTHERWISE NOTED DIMENSIONS ARE IN INCHES TOLERANCES ARE:	FRACTIONS ±1/64 DECIMALS ±.03 ANGLES ±1/2°
		PROPRIETARY NOTICE: THE INFORMATION IN THIS DRAWING IS PROPRIETARY AND SHALL NOT BE USED OR DISCLOSED WITHOUT THE PRIOR WRITTEN CONSENT OF ATM, INC.	SCALE N.T.S. DWG. NO. 7252W
			SHEET. 1/1 REV. -