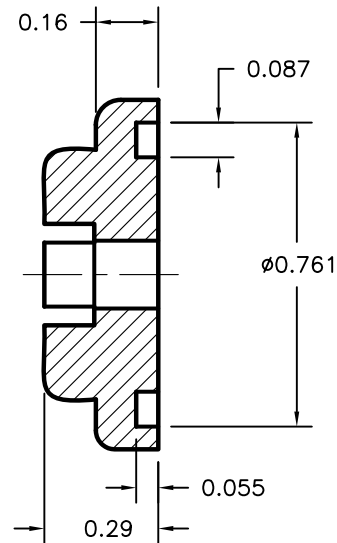
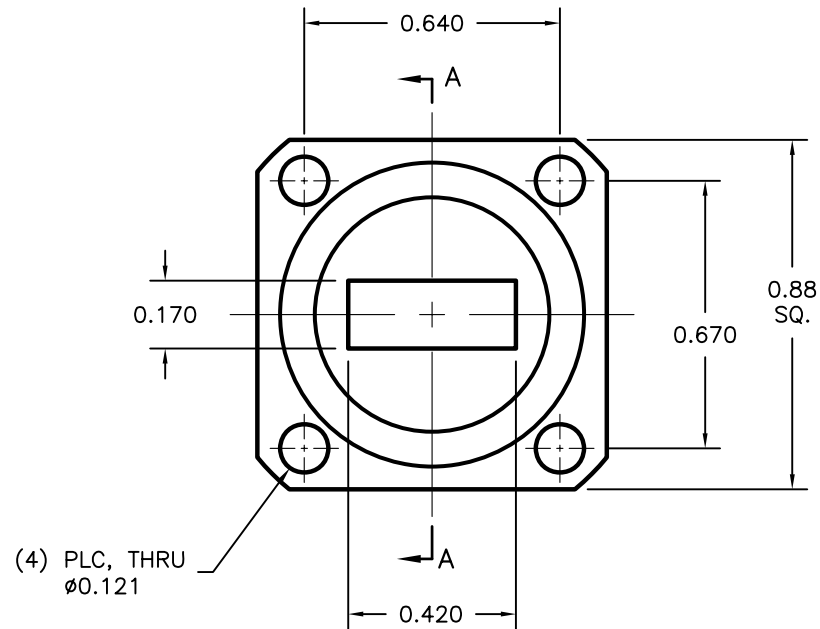


EQUIVALENT TO;

TYPE	SPECIFY MATERIAL
PBR 220	ALUM. OR BRASS



SECTION A-A



(4) PLC, THRU
Ø0.121

NOTES:

1. FLANGE SHOWN IS ATM STANDARD FLANGE FOR WAVEGUIDE TYPE NOTED. OTHER FLANGE TYPES ARE AVAILABLE UPON REQUEST.
2. ALL DRAWINGS INDICATE APPLICABLE MATING DIMENSIONS. NON INTERFACE VARIABLES SUCH AS THICKNESS, CORRAL DIMENSIONS, AND MATERIALS MAY VARY DEPENDING ON PRODUCT CONFIGURATION.

THIRD ANGLE PROJECTION:		APPROVALS	DATE	ADVANCED TECHNICAL MATERIALS, INC. TEL: (631) 289-0363 FAX: (631) 289-0358 www.atmmicrowave.com		THE INFORMATION IN THIS DRAWING IS PROPRIETARY AND SHALL NOT BE USED OR DISCLOSED WITHOUT THE PRIOR WRITTEN CONSENT OF ATM, INC. DO NOT SCALE DWG.			
UNLESS OTHERWISE NOTED, DIMENSIONS ARE IN INCHES, TOLERANCES ARE: FRACTIONS: ±1/64 ANGLES: ±1/2°		DRAWN M.R.	8/16/10	WR42 FLANGE PBR 220		REVISION A			
		CHKD.				ATM DWG # 12161		SHEET 1/1	
		APRVD.				SCALE NONE		MODEL # 42-PBR	
BASIC DIMENSION	DECIMALS 2 PLACE 3 PLACE	MATERIAL PER ORDER		CAGE CODE OR8N4					
UNDER 6"	±.02 ±.005								
6" - 12"	±.03 ±.010	TREATMENT -							
OVER 12"	±.06 ±.015	FINISH -							