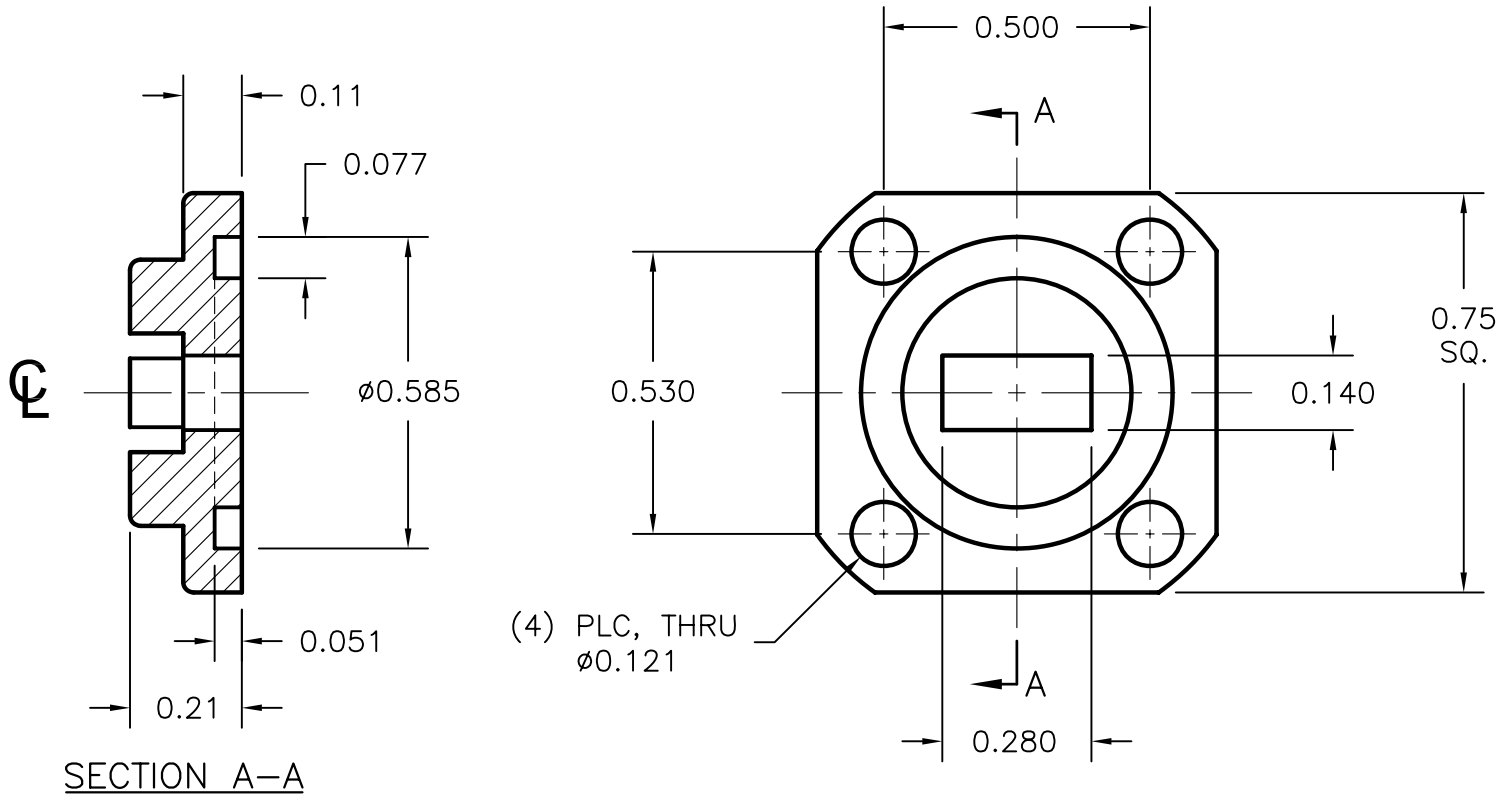


EQUIVALENT TO;

TYPE	SPECIFY MATERIAL
PBR 320	ALUM. OR BRASS



NOTES:

1. FLANGE SHOWN IS ATM STANDARD FLANGE FOR WAVEGUIDE TYPE NOTED. OTHER FLANGE TYPES ARE AVAILABLE UPON REQUEST.
2. ALL DRAWINGS INDICATE APPLICABLE MATING DIMENSIONS. NON INTERFACE VARIABLES SUCH AS THICKNESS, CORRAL DIMENSIONS, AND MATERIALS MAY VARY DEPENDING ON PRODUCT CONFIGURATION.

THIRD ANGLE PROJECTION:		APPROVALS	DATE	ADVANCED TECHNICAL MATERIALS, INC. TEL: (631) 289-0363 FAX: (631) 289-0358 www.atmmicrowave.com		<small>THE INFORMATION IN THIS DRAWING IS PROPRIETARY AND SHALL NOT BE USED OR DISCLOSED WITHOUT THE PRIOR WRITTEN CONSENT OF ATM, INC. DO NOT SCALE DWG.</small>	
UNLESS OTHERWISE NOTED, DIMENSIONS ARE IN INCHES, TOLERANCES ARE: FRACTIONS: ±1/64 ANGLES: ±1/2°		DRAWN M.R.	8/16/10	WR28 FLANGE PBR 320			
		CHKD.					
		APRVD.					
BASIC DIMENSION	DECIMALS 2 PLACE 3 PLACE	MATERIAL PER ORDER		SIZE A	CAGE CODE OR8N4	ATM DWG # 12160	REVISION A
UNDER 6"	±.02 ±.005			SCALE	NONE	MODEL # 28-PBR	SHEET 1/1
6" - 12"	±.03 ±.010	TREATMENT -					
OVER 12"	±.06 ±.015	FINISH -					