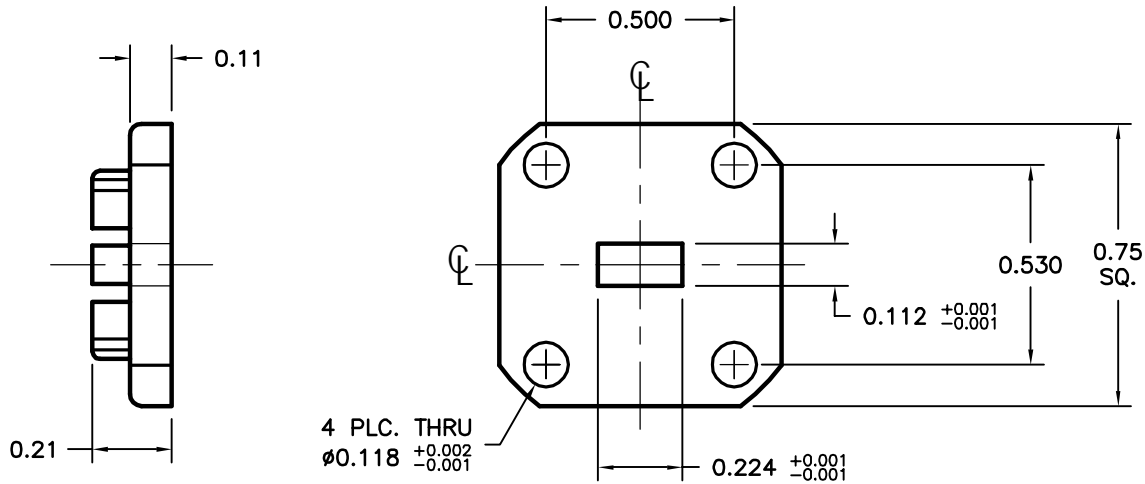


REV -	AUTH RL	DATE 02/08/06	INITIAL RELEASE
----------	------------	------------------	-----------------



NOTES:

1. FLANGE SHOWN IS ATM STANDARD FLANGE FOR WAVEGUIDE TYPE NOTED. OTHER FLANGE TYPES ARE AVAILABLE UPON REQUEST.
2. ALL DRAWINGS INDICATE APPLICABLE MATING DIMENSIONS. NON INTERFACE VARIABLES SUCH AS THICKNESS, CORRAL DIMENSIONS, AND MATERIALS MAY VARY DEPENDING ON PRODUCT CONFIGURATION.

THIRD ANGLE PROJECTION:		APPROVALS	DATE		ADVANCED TECHNICAL MATERIALS, INC. TEL: (631) 289-0363 FAX: (631) 289-0358 www.atmmicrowave.com		THE INFORMATION IN THIS DRAWING IS PROPRIETARY AND SHALL NOT BE USED OR DISCLOSED WITHOUT THE PRIOR WRITTEN CONSENT OF ATM, INC. DO NOT SCALE DWG.	
UNLESS OTHERWISE NOTED, DIMENSIONS ARE IN INCHES. TOLERANCES ARE: FRACTIONS: ±1/64 ANGLES: ±1/2°		DRAWN RL	02/08/06		WR22 FLANGE, SQUARE COVER			
BASIC DIMENSION		DECIMALS 2 PLACE	3 PLACE	APRVD.			SIZE A	CAGE CODE OR8N4
UNDER 6"	±.02	±.005	MATERIAL SEE NOTES	SCALE 2 : 1	MODEL # -	SHEET 1/1		
6" - 12"	±.03	±.010	TREATMENT -					
OVER 12"	±.06	±.015	FINISH -					