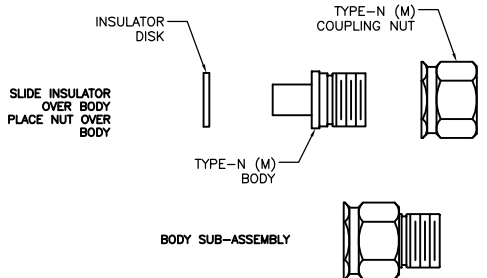
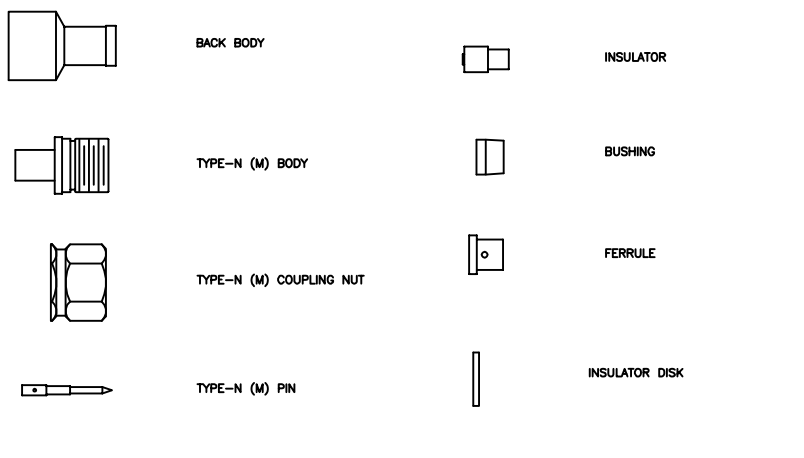
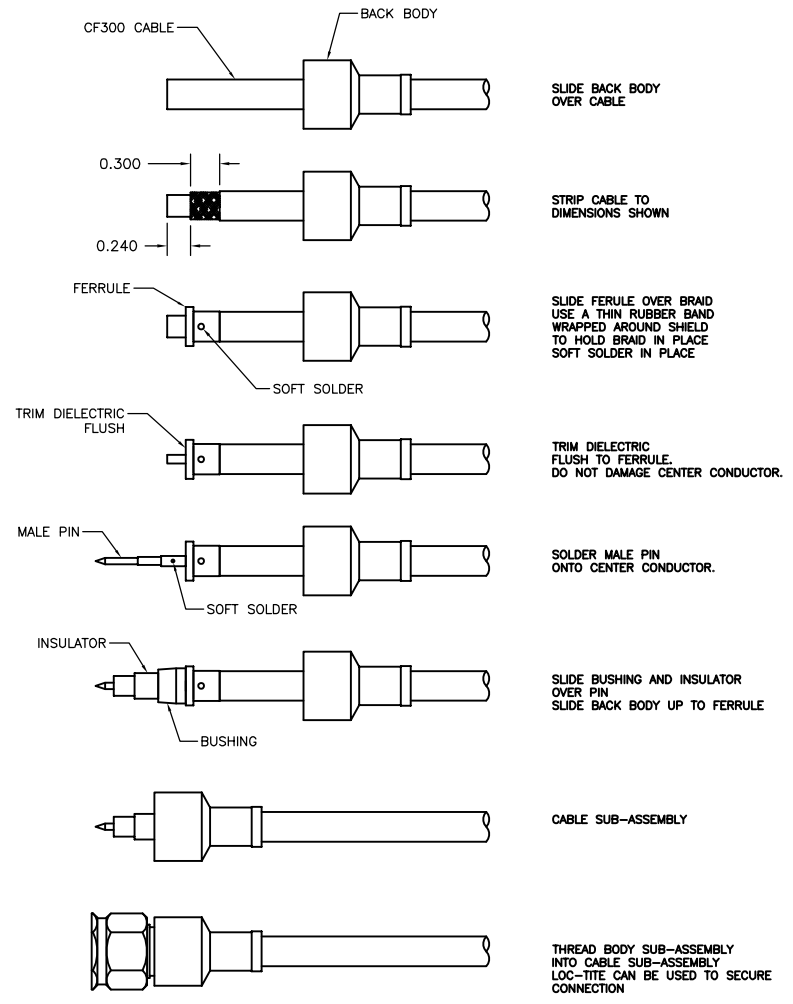


REV A	AUTH M.B.	DATE 03/30/05	INITIAL RELEASE
REV B	AUTH M.R.	DATE 08/11/15	CORRECTED PROCEDURE TO REFLECT UPDATED CONNECTOR.

PART LIST



PROCEDURE



NOTES:
 NO EXCESS SOLDER SHOULD BE EXPOSED ON THE CABLE FERRULE OR THE CONNECTOR PIN. THIS COULD EFFECT ELECTRICAL PERFORMANCE, OR MECHANICAL ASSEMBLY.

THIRD ANGLE PROJECTION:		APPROVALS	DATE	ADVANCED TECHNICAL MATERIALS, INC. TEL: (631) 289-0363 FAX: (631) 289-0358 www.atmmicrowave.com		<small>THE INFORMATION IN THIS DRAWING IS PROPRIETARY AND SHALL NOT BE USED OR DISCLOSED WITHOUT THE PRIOR WRITTEN CONSENT OF ATM, INC. DO NOT SCALE DWG.</small>				
UNLESS OTHERWISE NOTED, DIMENSIONS ARE IN INCHES, TOLERANCES ARE: FRACTIONS: ±1/64 ANGLES: ±1/2° MACHINED FINISH 63 ✓ OR BETTER		DRAWN M.B.	03/30/05	<h2>ASSEMBLY PROCEDURE</h2> <h3>CONNECTOR / CABLE, NM-300</h3>				REVISION B		
DECIMALS 2 PLACE 3 PLACE		CHKD.						SIZE A	CAGE CODE OR8N4	ATM DWG # 7210
±.01	±.005	APRVD.						SCALE 1 : 1	MODEL # NM-300	SHEET 1/1