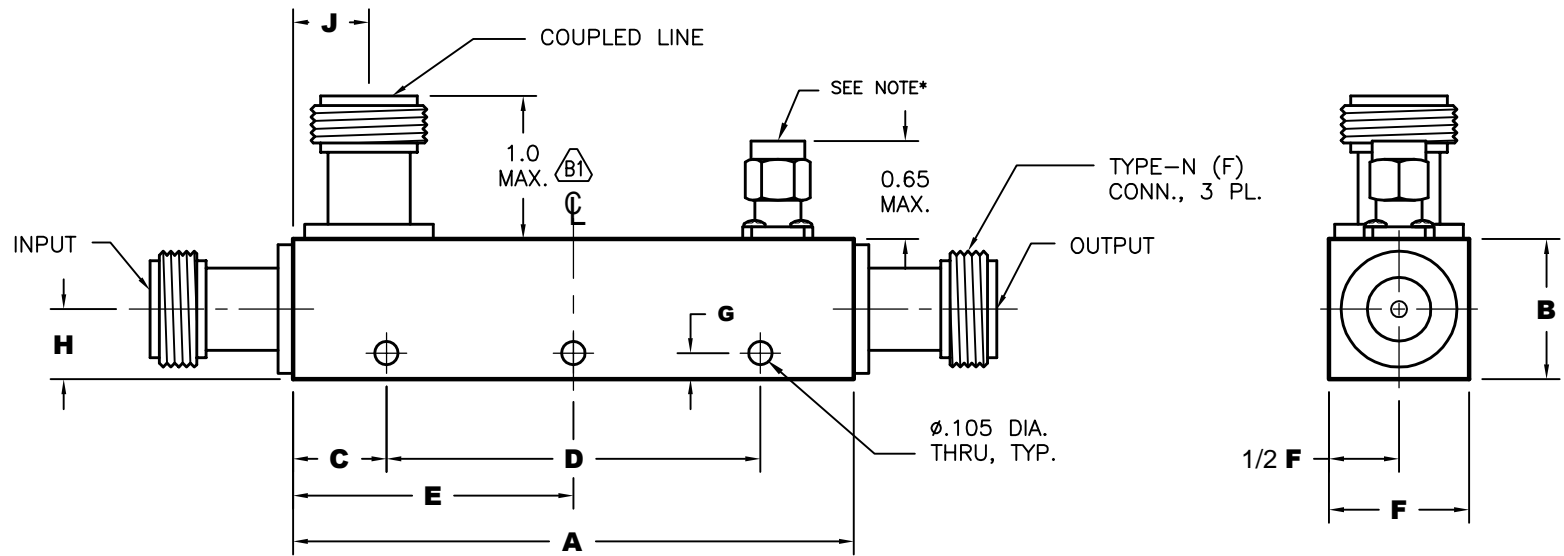


REV A	AUTH RL	DATE 8/8/01	INITIAL RELEASE
B	AUTH RL	11/08/05	(B1) WAS: .80 MAX., DIMSTYLE, NOTES, GEN. TOLERANCES, TITLE BLOCK UPDATED.
C	AUTH RL	08/23/07	NOTES UPDATED, TITLE BLOCK UPDATED.
D	AUTH M.R.	8/8/11	ADDED FIG 8, 9. TITLE BLOCK UPDATED
E	AUTH M.R.	04/04/14	ADDED FIG 10



DIMENSIONS IN INCHES									
FIG.	A	B	C	D	E	F	G	H	J
1	3.10	0.50	0.80	1.50	---	0.50	0.08	0.22	0.25
2	3.10	0.55	0.80	1.50	---	0.50	0.08	0.22	0.25
3	2.00	0.75	0.50	1.00	---	0.75	0.14	0.38	0.40
4	1.78	0.50	0.42	0.94	---	0.50	0.14	0.22	0.25
5	1.32	0.69	0.41	0.50	---	0.75	0.14	0.35	0.40
6	1.16	0.69	0.41	0.34	---	0.75	0.14	0.35	0.25
7	1.16	0.50	0.41	0.34	---	0.50	0.08	0.22	0.25
8	1.00	0.50	---	---	0.50	0.40	0.08	0.22	0.25
9	1.00	0.55	---	---	0.50	0.40	0.08	0.22	0.25
10	1.00	0.60	---	---	0.50	0.40	0.08	0.22	0.25

NOTES:

- *NOTE: SECONDARY TERMINATION CAN BE INTERNAL OR EXTERNAL DEPENDING ON MODEL AND SHOULD NOT BE REMOVED. FOR CONNECTORIZED LOADS CONSULT FACTORY.

THIRD ANGLE PROJECTION:		APPROVALS	DATE	ADVANCED TECHNICAL MATERIALS, INC. TEL: (631) 289-0363 FAX: (631) 289-0358 www.atmmicrowave.com		<small>THE INFORMATION IN THIS DRAWING IS PROPRIETARY AND SHALL NOT BE USED OR DISCLOSED WITHOUT THE PRIOR WRITTEN CONSENT OF ATM, INC. DO NOT SCALE DWG.</small>	
UNLESS OTHERWISE NOTED, DIMENSIONS ARE IN INCHES, TOLERANCES ARE: FRACTIONS: ±1/64 ANGLES: ±1/2° MACHINED FINISH 63 √ OR BETTER		DRAWN R.L.	08/08/01				
DECIMALS 2 PLACE 3 PLACE		CHKD.		OUTLINE DIRECTIONAL COUPLER, TYPE-N, OCTAVE BAND			
±.01 ±.005		APRVD.					
		MATERIAL ALUM BODY		SIZE A	CAGE CODE OR8N4	ATM DWG # 4509W	REVISION E
		TREATMENT -		SCALE 1 : 1	MODEL # C21X-XX		SHEET 1/1