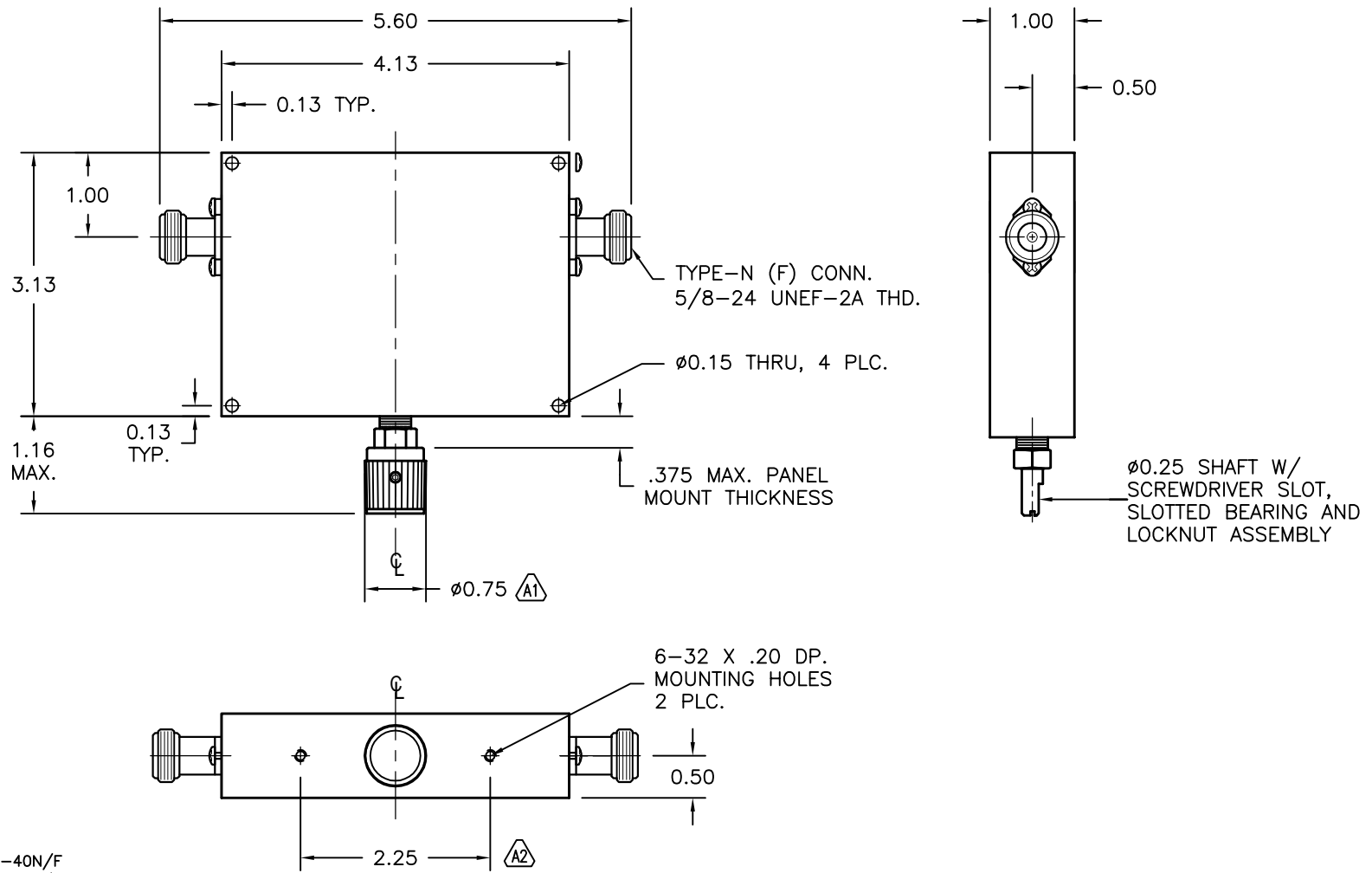


REV	AUTH	DATE	INITIAL RELEASE
-	RTK	04/19/00	
A	RL	07/25/06	FORMAT UPDATE; SPECS ADDED, $\triangle A1$ KNOB WAS $\phi 1.25"$ $\triangle A2$ WAS: 3.00"
B	BF	4-18-12	PER E.C.N. 04-18-12-01, CORRECTED NOTES TO TYPE N, UPDATE SIZE AND CONNECTOR TO NEW CONFIG



MODEL SPECIFICATIONS

MECHANICAL

MODEL NUMBER(S): AV262D-40N/F
AV262E-40N/F

MATERIAL:
BODY: 6061/T-6 ALUM.
CONNECTORS: STAINLESS STEEL
FINISH: UNIQUE CORROSION RESISTANT
316 STAINLESS STEEL EPOXY COATING

CONNECTORS: TYPE N (F) 2 PLC

ELECTRICAL

FREQ. RANGE:
AV262D-40N/F 0.85 - 2.5 GHz
AV262E-40N/F 0.85 - 4.0 GHz

VSWR: 1.5 MAX.

ATTENUATION RANGE: 40dB

INSERTION LOSS: 0.5dB MAX.

THIRD ANGLE PROJECTION:		APPROVALS	DATE	ADVANCED TECHNICAL MATERIALS, INC. TEL: (631) 289-0363 FAX: (631) 289-0358 www.atmmicrowave.com		<small>THE INFORMATION IN THIS DRAWING IS PROPRIETARY AND SHALL NOT BE USED OR DISCLOSED WITHOUT THE PRIOR WRITTEN CONSENT OF ATM, IN DO NOT SCALE DWG.</small>			
UNLESS OTHERWISE NOTED, DIMENSIONS ARE IN INCHES. TOLERANCES ARE: FRACTIONS: $\pm 1/64$ ANGLES: $\pm 1/2^\circ$				DRAWN RL	07/25/06	OUTLINE, AV262X-40 ATTENUATOR, TYPE-N			
BASIC DIMENSION		DECIMALS 2 PLACE 3 PLACE		CHKD.	APRVD.				
UNDER 6"	$\pm .02$	$\pm .005$	MATERIAL SEE SPECS						
6" - 12"	$\pm .03$	$\pm .010$	TREATMENT -			SIZE A	CAGE CODE OR8N4	ATM DWG # 2631W	REVISION B
OVER 12"	$\pm .06$	$\pm .015$	FINISH SEE SPECS			SCALE 1 : 2	MODEL # SEE SPECS		SHEET 1/1