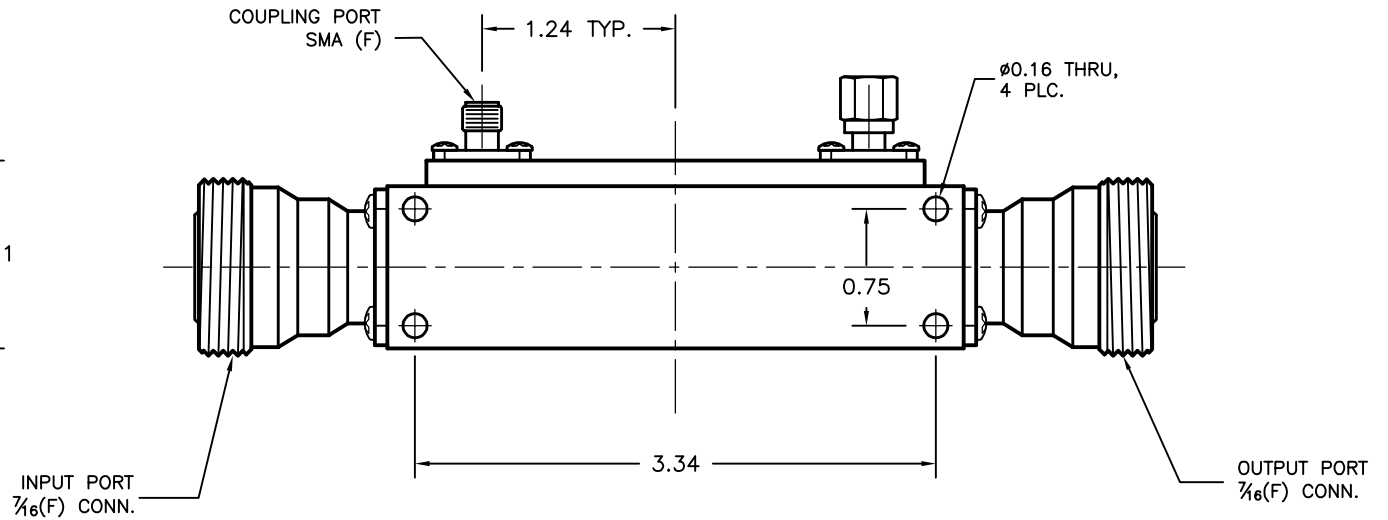
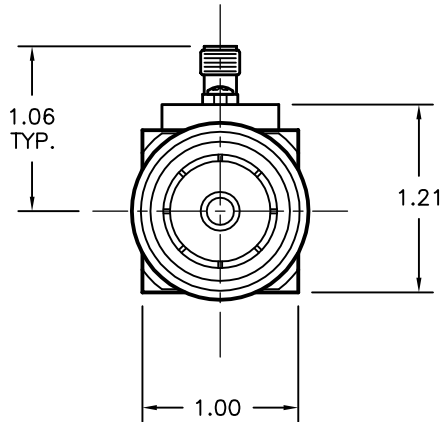
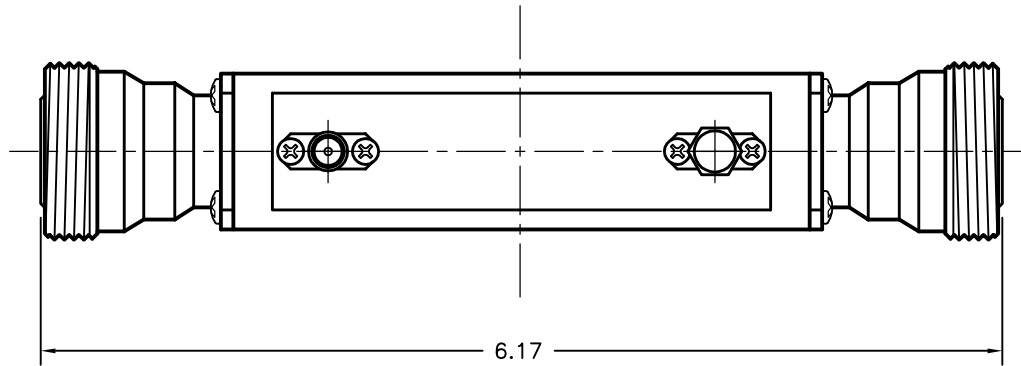


| | | | |
|-------|-----------|---------------|---|
| REV A | AUTH LM | DATE 1/17/14 | INITIAL RELEASE |
| REV B | AUTH M.R. | DATE 10/10/17 | APPLICATION TABLE ADDED, PORT LABELS CORRECTED, FORMAT UPDATE |



| APPLICATIONS: | |
|-----------------|-----------------|
| FREQ. RANGE GHz | MODEL NUMBER |
| 0.86-1.70 | CHP(1/16)23L-XX |
| 1.0-2.0 | CHP(1/16)23-XX |
| 2.0-4.0 | CHP(1/16)24-XX |
| 1.0-4.0 | CHP(1/16)23E-XX |
| 0.8-4.2 | CHP(1/16)22L-XX |

| | | | | | | | |
|-------------------------|--|-------------------------------|-------------|-------------------|--|---|--|
| THIRD ANGLE PROJECTION: | APPROVALS | DATE | | | L-3 Narda - ATM TEL: (631) 289-0363 FAX: (631) 289-0358 www.atmmicrowave.com | | <small>THE INFORMATION IN THIS DRAWING IS PROPRIETARY AND SHALL NOT BE USED OR DISCLOSED WITHOUT THE PRIOR WRITTEN CONSENT OF L3 NARDA-ATM, INC. DO NOT SCALE DWG.</small> |
| | UNLESS OTHERWISE NOTED, DIMENSIONS ARE IN INCHES, TOLERANCES ARE: FRACTIONS: ±1/64 ANGLES: ±1/2° MACHINED FINISH 63 ✓ OR BETTER DECIMALS 2 PLACE 3 PLACE ±.01 ±.005 | DRAWN L.M. CHKD. APRVD. | | | 01/17/14 | OUTLINE H.P. COAXIAL COUPLER, 7/16 CONNECTORS | |
| | MATERIAL ALUM BODY | | SIZE A | CAGE CODE OR8N4 | ATM DWG # 15682W | REVISION B | |
| | TREATMENT CHEM FILM | | SCALE 1 : 1 | MODEL # SEE TABLE | | SHEET 1/1 | |
| | ATM STD GRAY | | | | | | |