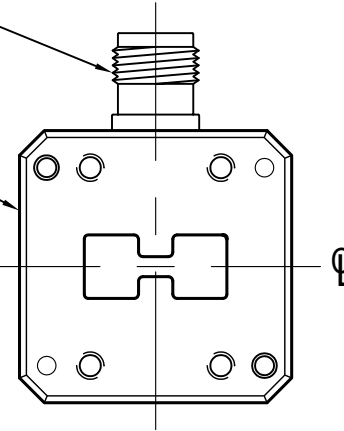


STD TNC(F) CONNECTOR

WRD650 FLANGE
(SEE TABLE)



DOUBLE RIDGE FLANGE TYPES		
DESIGNATION	TYPE	HOLE PATTERN
C1	COVER	ALL THRU/TAPPED
C2	COVER	ALL TAPPED
C3	COVER	ALL THROUGH
G1	GROOVE	ALL THRU/TAPPED
G2	GROOVE	ALL TAPPED
G3	GROOVE	ALL THROUGH

NOTES:

1. SHOWN WITH WRD650-C2 COVER FLANGE.

THIRD ANGLE PROJECTION:		APPROVALS	DATE	ADVANCED TECHNICAL MATERIALS, INC. TEL: (631) 289-0363 FAX: (631) 289-0358 www.atmmicrowave.com		<small>THE INFORMATION IN THIS DRAWING IS PROPRIETARY AND SHALL NOT BE USED OR DISCLOSED WITHOUT THE PRIOR WRITTEN CONSENT OF ATM, INC. DO NOT SCALE DWG.</small>	
UNLESS OTHERWISE NOTED, DIMENSIONS ARE IN INCHES. TOLERANCES ARE: FRACTIONS: $\pm 1/64$ ANGLES: $\pm 1/2^\circ$ MACHINED FINISH 63 \checkmark OR BETTER		DRAWN DM	07/15/14	OUTLINE WRD650 WG-COAX ADAPTER			
		CHKD.					
		APRVD.		MATERIAL ALUMINUM		SIZE A	CAGE CODE OR8N4
				TREATMENT CHEM FILM		ATM DWG # 16198	REVISION A
						SCALE NONE	MODEL # 650-255-XX
							SHEET 1/1