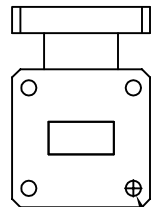
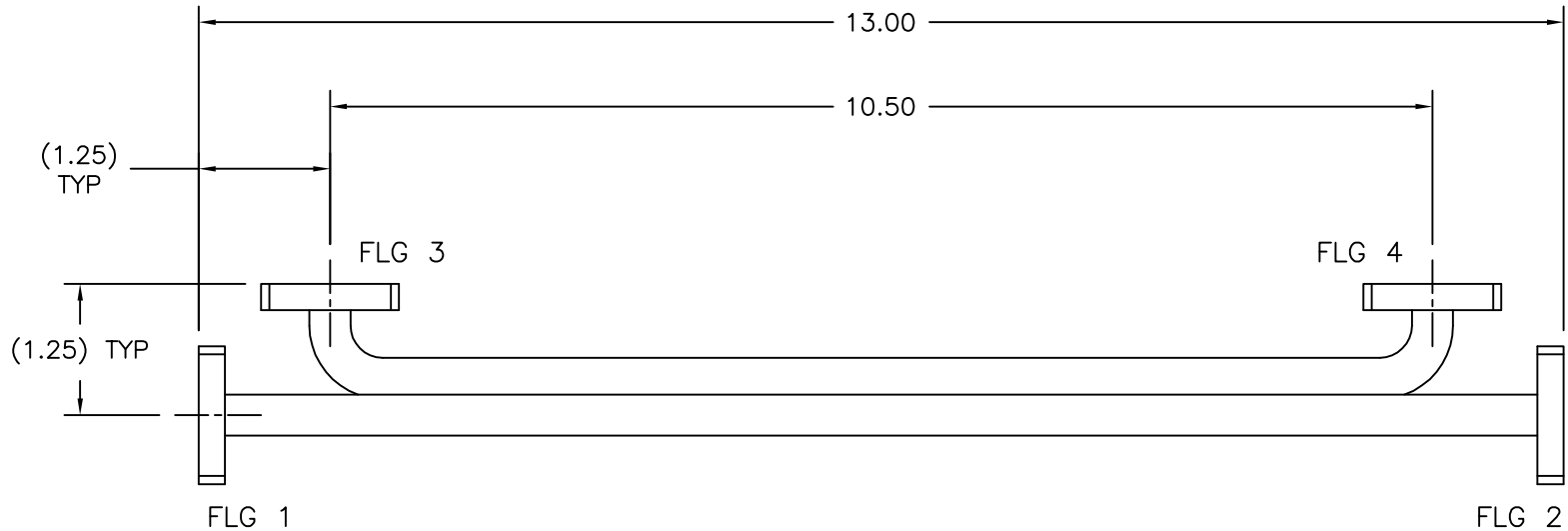
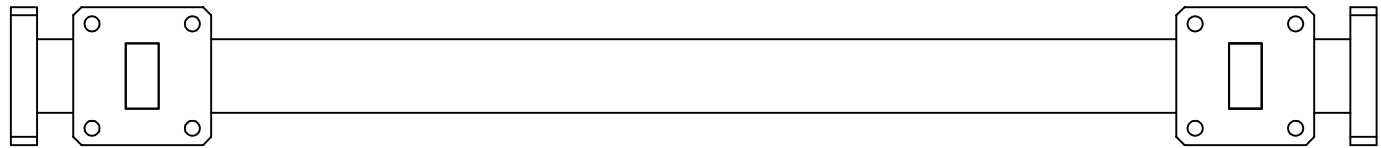


REV A	AUTH DM	DATE 06/06/13	INITIAL RELEASE
----------	------------	------------------	-----------------



($\phi 0.145$ THRU, TYP)
WR62 STD COVER FLANGE
(UG-1665/U)

THIRD ANGLE PROJECTION:		APPROVALS	DATE	ADVANCED TECHNICAL MATERIALS, INC. TEL: (631) 289-0363 FAX: (631) 289-0358 www.atmmicrowave.com		THE INFORMATION IN THIS DRAWING IS PROPRIETARY AND SHALL NOT BE USED OR DISCLOSED WITHOUT THE PRIOR WRITTEN CONSENT OF ATM, INC. DO NOT SCALE DWG.	
UNLESS OTHERWISE NOTED, DIMENSIONS ARE IN INCHES, TOLERANCES ARE: FRACTIONS: $\pm 1/64$ ANGLES: $\pm 1/2^\circ$ MACHINED FINISH 63 \checkmark OR BETTER		DRAWN DM	06/06/13	OUTLINE WR62 BROADWALL COUPLER - 4 PORT		REVISION A	
DECIMALS 2 PLACE 3 PLACE		CHKD.				SCALE A	CAGE CODE OR8N4
± 0.01	± 0.005	APRVD.		MATERIAL ALUMINUM		MODEL # 62-310A-XX-6-6-6-6	
		TREATMENT CHEM FILM		NONE			