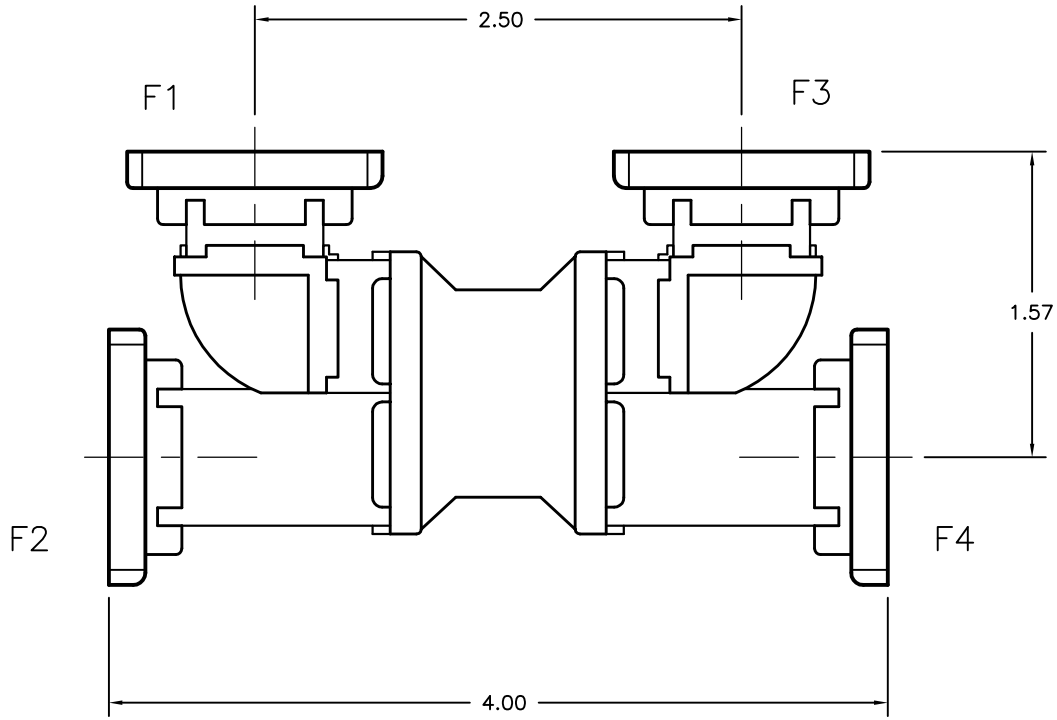


REV A	AUTH J.E.	DATE 10/14/02	INITIAL RELEASE
REV B	AUTH R.L.	DATE 05/11/04	CORRECTED FREQ. NOTES
REV C	AUTH M.R.	DATE 09/09/15	FORMAT UPDATE, RE-DRAW





MODEL NUMBER	FREQ. RANGE:
62-261X-Z-6-6-6-6	12.4-14.0
62-262X-Z-6-6-6-6	13.5-15.6
62-263X-Z-6-6-6-6	15.5-18.0

MODEL SPECIFICATIONS

MECHANICAL
 MODEL NUMBER(S): SEE TABLE
 MATERIAL: ALUM. OR COPPER/BRASS (PER ORDER)
 UNIQUE CORROSION RESISTANT
 FINISH: 316 STAINLESS STEEL EPOXY COATING
 SPECIAL, PER CUSTOMER DWG.
 FLANGES: WR62 COVER, OTHERS AVAILABLE BUT DIMENSIONS
 MAY BE SUBJECT TO CHANGE

ELECTRICAL
 FREQ. RANGE: SEE TABLE
 POWER: 1 KW, CW
 VSWR: 1.15 MAX.
 ISOLATION: 26 dB MIN.
 BALANCE: ±.25 dB MAX.

THIRD ANGLE PROJECTION:  UNLESS OTHERWISE NOTED, DIMENSIONS ARE IN INCHES, TOLERANCES ARE: FRACTIONS: ±1/64 ANGLES: ±1/2° MACHINED FINISH 63 ✓ OR BETTER DECIMALS 2 PLACE 3 PLACE ±.01 ±.005	APPROVALS	DATE	 ADVANCED TECHNICAL MATERIALS, INC. TEL: (631) 289-0363 FAX: (631) 289-0358 www.atmmicrowave.com		THE INFORMATION IN THIS DRAWING IS PROPRIETARY AND SHALL NOT BE USED OR DISCLOSED WITHOUT THE PRIOR WRITTEN CONSENT OF ATM, INC. DO NOT SCALE DWG.	
	DRAWN J.E.	10/14/02	OUTLINE, WR62 HYBRID COUPLER, Z-TYPE			
	CHKD.					
	APRVD.					
MATERIAL -			SIZE A	CAGE CODE OR8N4	ATM DWG # 5227W	REVISION C
TREATMENT -			SCALE 1 : 1	MODEL # SEE TABLE		SHEET 1/1