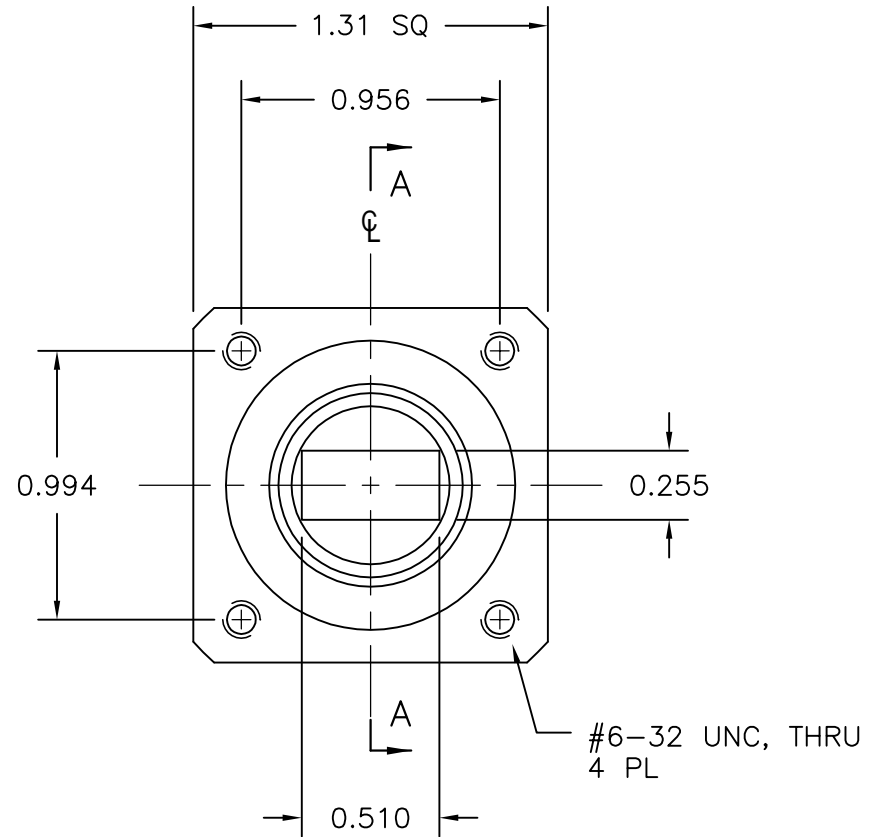


**SECTION A-A**



#6-32 UNC, THRU  
4 PL

**NOTES:**

1. ALL DRAWINGS INDICATE APPLICABLE MATING DIMENSIONS. NON INTERFACE VARIABLES SUCH AS THICKNESS, CORRAL DIMENSIONS, AND MATERIALS MAY VARY DEPENDING ON PRODUCT CONFIGURATION.

|  |  |                 |          |  |                               |   |                        |
|--|--|-----------------|----------|--|-------------------------------|---|------------------------|
| THIRD ANGLE PROJECTION:  |  | APPROVALS       | DATE     | <b>ADVANCED TECHNICAL MATERIALS, INC.</b><br>TEL: (631) 289-0363 FAX: (631) 289-0358<br>www.atmmicrowave.com |                               | THE INFORMATION IN THIS DRAWING IS PROPRIETARY AND SHALL NOT BE USED OR DISCLOSED WITHOUT THE PRIOR WRITTEN CONSENT OF ATM, INC.<br>DO NOT SCALE DWG. |                        |
| UNLESS OTHERWISE NOTED, DIMENSIONS ARE IN INCHES, TOLERANCES ARE:<br><br>FRACTIONS: ±1/64 ANGLES: ±1/2°<br><br>MACHINED FINISH<br>63 ✓ OR BETTER |  | DRAWN <b>DM</b> | 01/23/14 | <b>OUTLINE</b><br>WR51 FLANGE - CHOKE  |                               | REVISION <b>A</b>   |                        |
| DECIMALS<br>2 PLACE 3 PLACE  |  | CHKD.           |          |  |                               | SIZE <b>A</b>   | CAGE CODE <b>OR8N4</b> |
| ±.01 ±.005   |  | APRVD.          |          | SCALE <b>NONE</b>  | MODEL # <b>WR51 CHOKE FLG</b> | SHEET <b>1/1</b>  |                        |