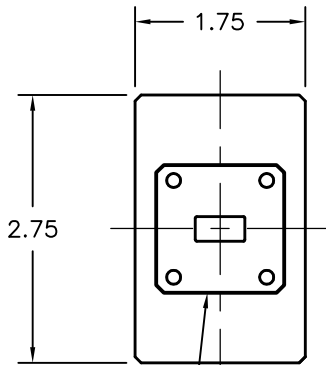
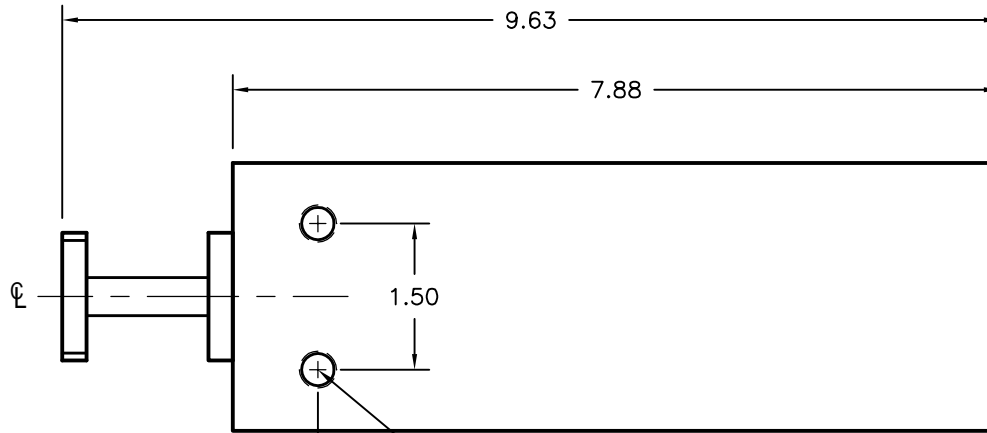


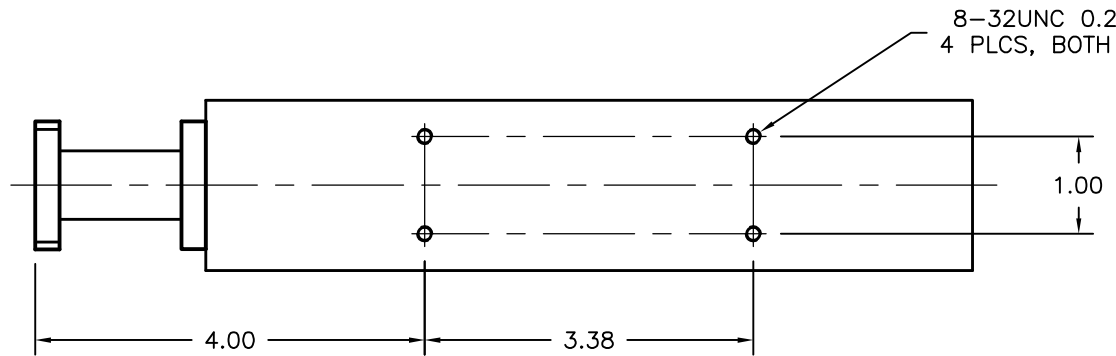
REV -	AUTH RL	DATE 07/21/06	INITIAL RELEASE
REV A	AUTH M.R.	DATE 12/10/10	ADDED FITTING NOTE TO PORTS
REV B	AUTH M.R.	DATE 7/27/11	PAINT CHANGED TO OPTIONAL



INPUT FLANGE: WR51 COVER,
EQUIV. TO MIL-F-3922/70-024



1/8-27 NPT INLET/OUTLET
PORT, 2 PLC.
BARBED FITTINGS PROVIDED



MODEL SPECIFICATIONS

MECHANICAL

MODEL NUMBER(S): 51-770-6
 MATERIAL: 6061/T-6 ALUM.
 FINISH: CHEM FILM, HI-TEMP BLACK OPTIONAL
 FLANGES: 51 COVER-TYPE STANDARD

ELECTRICAL

FREQ. RANGE: 15.0 - 22.0 GHz
 AVG POWER: 1700 WATTS

THIRD ANGLE PROJECTION:		APPROVALS	DATE	ADVANCED TECHNICAL MATERIALS, INC. TEL: (631) 289-0363 FAX: (631) 289-0358 www.atmmicrowave.com		THE INFORMATION IN THIS DRAWING IS PROPRIETARY AND SHALL NOT BE USED OR DISCLOSED WITHOUT THE WRITTEN CONSENT OF ATM, IN DO NOT SCALE DWG.	
UNLESS OTHERWISE NOTED, DIMENSIONS ARE IN INCHES. TOLERANCES ARE: FRACTIONS: ±1/64 ANGLES: ±1/2°		DRAWN RL	07/21/06	<p style="text-align: center;">OUTLINE, WR51 H2O COOLED TERMINATION, SPEC.</p>			
BASIC DIMENSION		CHKD.	APRVD.				
DECIMALS 2 PLACE 3 PLACE		MATERIAL ALUM.					
UNDER 6"	±.02 ±.005	TREATMENT -		SIZE A	CAGE CODE 0R8N4	ATM DWG # 6847	REVISION B
6" - 12"	±.03 ±.010	SEE NOTES		SCALE 1 : 2	MODEL # SEE NOTES	SHEET 1/1	
OVER 12"	±.06 ±.015						