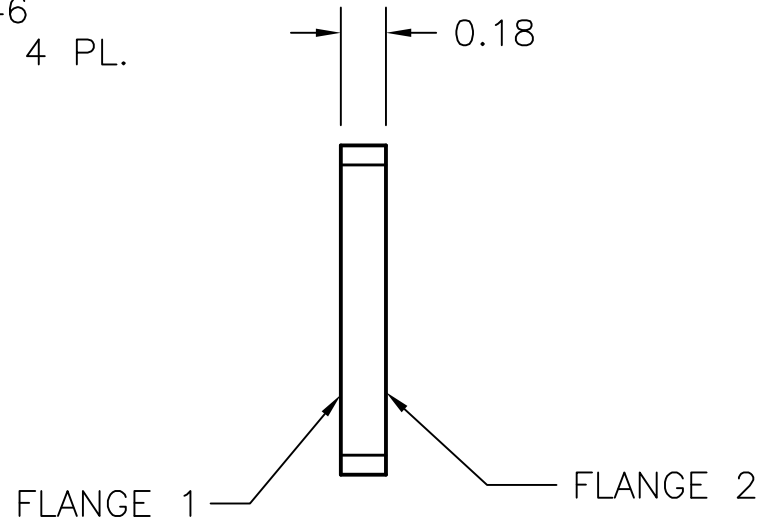
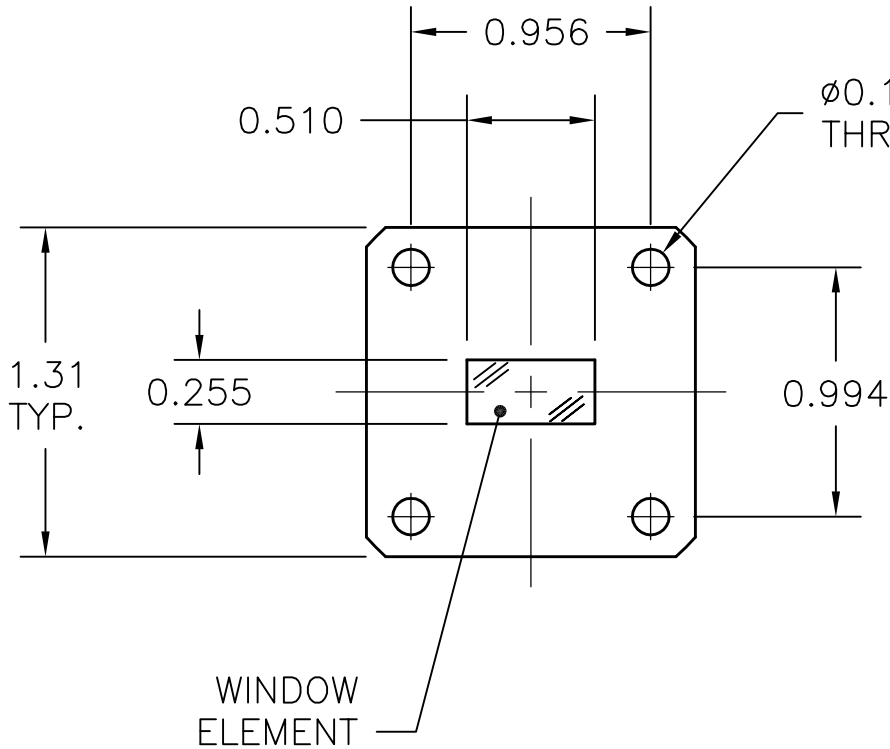


REV A	AUTH M.R.	DATE 10/31/16	INITIAL RELEASE
----------	--------------	------------------	-----------------



TYPICAL MODEL NUMBER (EXAMPLE): **51-233-6-X**

WAVEGUIDE SIZE: (WR DESIG.)

PRESSURE WINDOW:

FLANGE 1: 6=COVER

FLANGE 2: 6=COVER 8=COVER GROOVE

MODEL NUMBER: 51-233-6-X  
 FREQ. RANGE: 15.0 - 22.0 GHz  
 VSWR: 1.12 (MAX.)  
 POWER: 350 W CW  
 PRESSURE: 25 PSI. MAX.

THIRD ANGLE PROJECTION:	APPROVALS	DATE		L-3 Narda - ATM		THE INFORMATION IN THIS DRAWING IS PROPRIETARY AND SHALL NOT BE USED OR DISCLOSED WITHOUT THE PRIOR WRITTEN CONSENT OF ATM, INC. DO NOT SCALE DWG.
	UNLESS OTHERWISE NOTED, DIMENSIONS ARE IN INCHES, TOLERANCES ARE: FRACTIONS: $\pm 1/64$ ANGLES: $\pm 1/2^\circ$ MACHINED FINISH 63 $\checkmark$ OR BETTER	DRAWN M.R.		10/31/16	TEL: (631) 289-0363 FAX: (631) 289-0358 www.atmmicrowave.com	
	CHKD.		<b>OUTLINE</b> WR51 PRESSURE WINDOW			
	APRVD.					
DECIMALS 2 PLACE 3 PLACE	MATERIAL 360 BRASS	SIZE A	CAGE CODE OR8N4	ATM DWG # 18198	REVISION A	
$\pm .01$ $\pm .005$	TREATMENT CHEM FILM	SCALE 1 : 1	MODEL # SEE NOTES	SHEET 1/1		
	NONE					