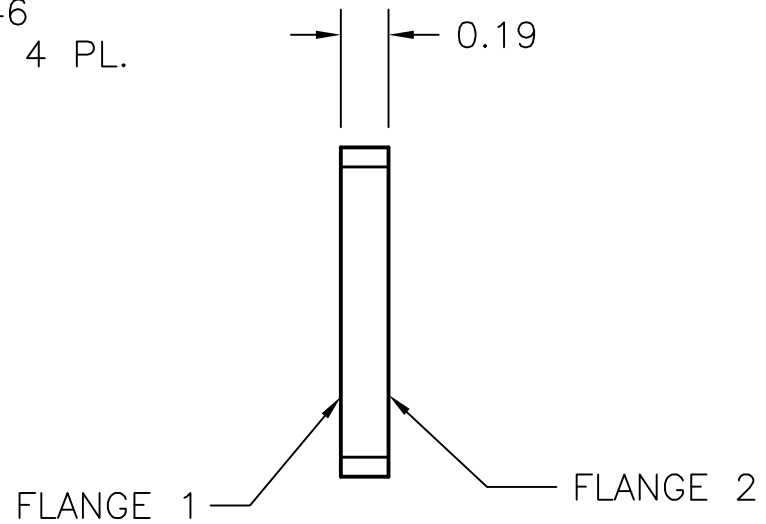
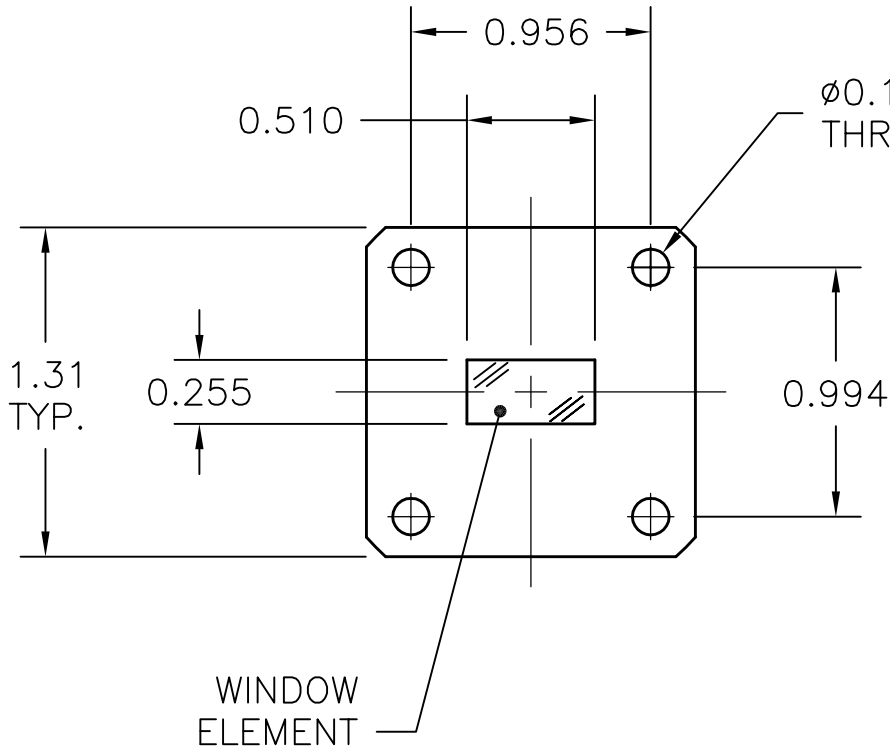


REV A	AUTH M.R.	DATE 10/31/16	INITIAL RELEASE
----------	--------------	------------------	-----------------



TYPICAL MODEL NUMBER (EXAMPLE): **51-230-6-X**

WAVEGUIDE SIZE: (WR DESIG.)

PRESSURE WINDOW:

FLANGE 1: 6=COVER

FLANGE 2: 6=COVER 8=COVER GROOVE

MODEL NUMBER: 51-230-6-X
 FREQ. RANGE: 15.0 - 22.0 GHz
 VSWR: 1.12 (MAX.)
 POWER: 500 W CW
 MAX POWER: 100 kW
 PRESSURE: 40 PSI. MAX.

THIRD ANGLE PROJECTION:	APPROVALS	DATE		L-3 Narda - ATM		THE INFORMATION IN THIS DRAWING IS PROPRIETARY AND SHALL NOT BE USED OR DISCLOSED WITHOUT THE PRIOR WRITTEN CONSENT OF ATM, INC. DO NOT SCALE DWG.
	DRAWN M.R.	10/31/16		TEL: (631) 289-0363 FAX: (631) 289-0358 www.atmmicrowave.com		
UNLESS OTHERWISE NOTED, DIMENSIONS ARE IN INCHES, TOLERANCES ARE: FRACTIONS: ±1/64 ANGLES: ±1/2° MACHINED FINISH 63 ✓ OR BETTER	CHKD.		OUTLINE WR51 PRESSURE WINDOW			
	APRVD.					
DECIMALS 2 PLACE 3 PLACE	MATERIAL 360 BRASS	SIZE A	CAGE CODE OR8N4	ATM DWG # 18199	REVISION A	
±.01 ±.005	TREATMENT CHEM FILM	SCALE 1 : 1	MODEL # SEE NOTES	SHEET 1/1		
	NONE					