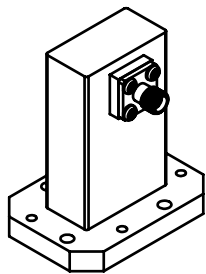


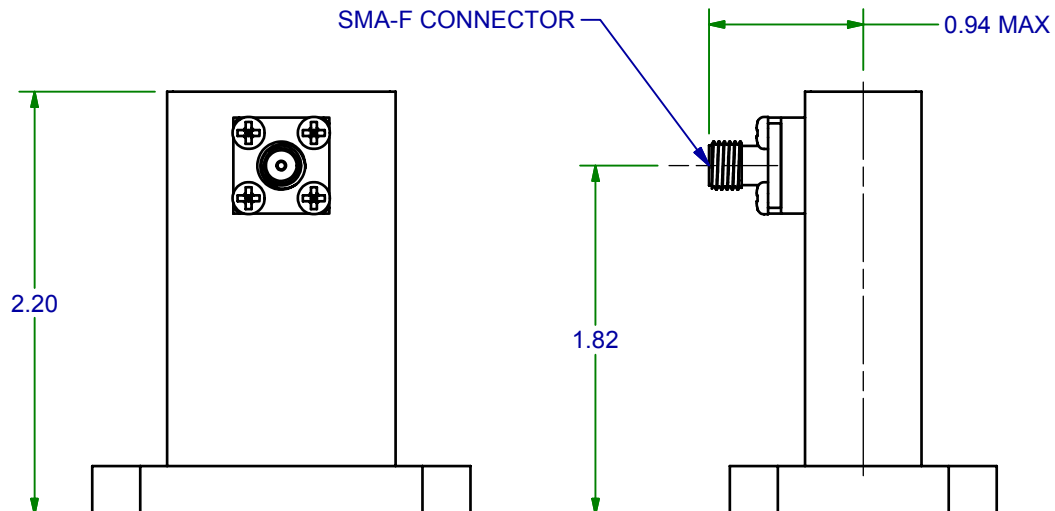
2

1

REVISION HISTORY			
REV	AUTH	DATE	DESCRIPTION
A	DM	03/24/11	INITIAL RELEASE



ISO VIEW  
SCALE 1 / 2



### SPECIFICATIONS

**MODEL#:** 475-251-XX

**WG SIZE:** WRD475

**FLANGE TYPE:** PER ORDER

**CONN TYPE:** SMA FEMALE

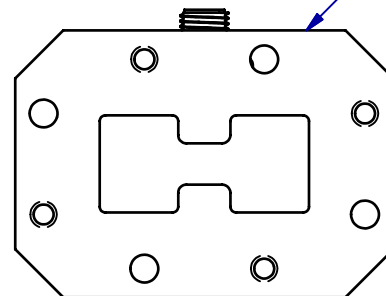
**FREQUENCY:** 4.75-11.0 GHz

**VSWR:** 1.25 max

**MATERIAL, BODY:** ALUMINUM

**MATERIAL, CONN:** STAINLESS STEEL

**FINISH:** UNIQUE CORROSION RESISTANT  
316 STAINLESS STEEL EPOXY



WRD475 FLANGE  
(PER CUSTOMER ORDER)  
SEE TABLE

WRD475 FLANGE TYPES		
Designation	Face Type	Hole Type
C1	COVER	ALT. TAPPED / THRU
C2	COVER	ALL TAPPED
C3	COVER	ALL THRU
G1	GROOVE	ALT. TAPPED / THRU
G2	GROOVE	ALL TAPPED
G3	GROOVE	ALL THRU

### NOTES:

1. SHOWN WITH WRD475-C1 FLANGE.

THIRD ANGLE PROJECTION:		APPROVALS	DATE	<b>ADVANCED TECHNICAL MATERIALS, INC.</b> TEL: (631) 289-0363 FAX: (631) 289-0358 www.atmmicrowave.com		THE INFORMATION IN THIS DRAWING IS PROPRIETARY AND SHALL NOT BE USED OR DISCLOSED WITHOUT THE PRIOR WRITTEN CONSENT OF ATM, INC. DO NOT SCALE DWG.	
UNLESS OTHERWISE NOTED, DIMENSIONS ARE IN INCHES, TOLERANCES ARE: FRACTIONS: $\pm 1/64$ ANGLES: $\pm 1/2^\circ$		DRAWN DM					
		MATERIAL 6061-T6 ALUMINUM		SIZE A	CAGE CODE 0R8N4	ATM DWG # 12959	REVISION A
DECIMALS		TREATMENT CHEM FILM		MODEL # 475-251-XX		SHEET 1/1	
2 PLACE	3 PLACE	FINISH ATM STD GRAY					
$\pm .01$	$\pm .005$						

## OUTLINE

### WRD475 WG-COAX ADAPTER - SMA

2

1