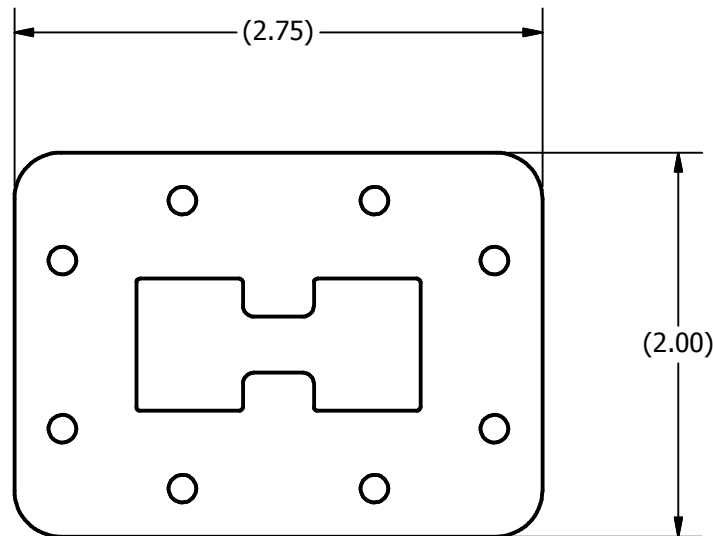
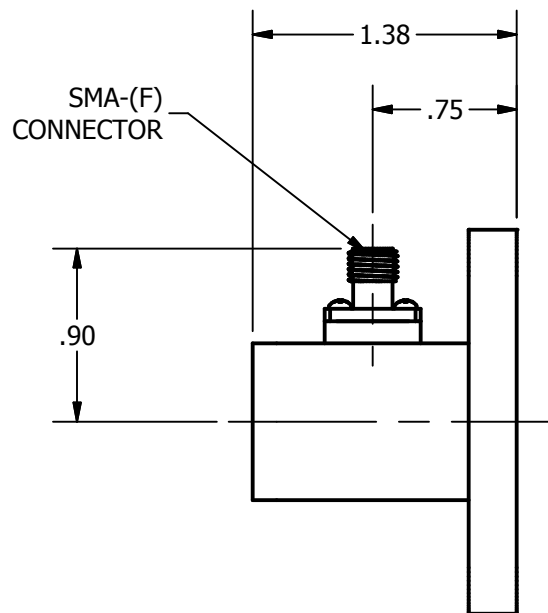


2

1

REVISION HISTORY

REV	AUTH	DATE	DESCRIPTION
A	RL	10-3-2016	INITIAL RELEASE



WRD350 FLANGE
PER ORDER, SEE TABLE

SPECIFICATIONS:

MODEL NUMBER: 350-251-FLANGE TYPE
 WG SIZE: WRD 350
 FREQ. RANGE: 3.5 - 8.2 GHz
 VSWR (MAX): 1.35
 W/G FLANGE: SEE TABLE BELOW

DOUBLE RIDGE FLANGE TYPES

DESIGNATION	TYPE	HOLE PATTERN
C1	COVER	ALT. TAPPED/THRU
C2	COVER	ALL TAPPED
C3	COVER	ALL THROUGH
G1	GROOVE	ALT. TAPPED/THRU
G2	GROOVE	ALL TAPPED
G3	GROOVE	ALL THROUGH

THIRD ANGLE PROJECTION:	DRAWN: RL DATE: 10/3/2016	 L3-NARDA-ATM 49 Rider Ave, Patchogue, NY 11772 TEL: (631) 289-0363 FAX: (631) 289-0358 www.atmmicrowave.com CAGE CODE: 0R8N4	THE INFORMATION IN THIS DRAWING IS PROPRIETARY AND SHALL NOT BE USED OR DISCLOSED WITHOUT THE PRIOR WRITTEN CONSENT OF L3 NARDA-ATM, INC.	
UNLESS OTHERWISE NOTED, DIMENSIONS ARE IN INCHES, TOLERANCES ARE: FRACTIONS: ±1/64 ANGLES: ±1/2°	CHKD. _____ APRVD. _____			
DECIMALS 2 PLACE 3 PLACE	MATERIAL _____	OUTLINE WRD350 WG-COAX ADAPTER		
±.01 ±.005	TREATMENT _____			
SHEET SIZE: A	SHEET #: _____	MODEL # 350-251-XX	ATM DWG # 17943	REVISION A
	SURFACE FINISH: 63 √ OR BETTER			

2

1