

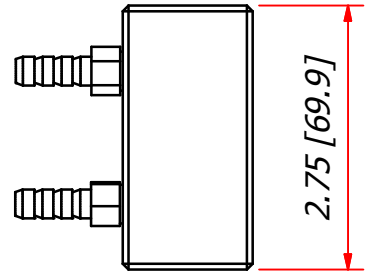
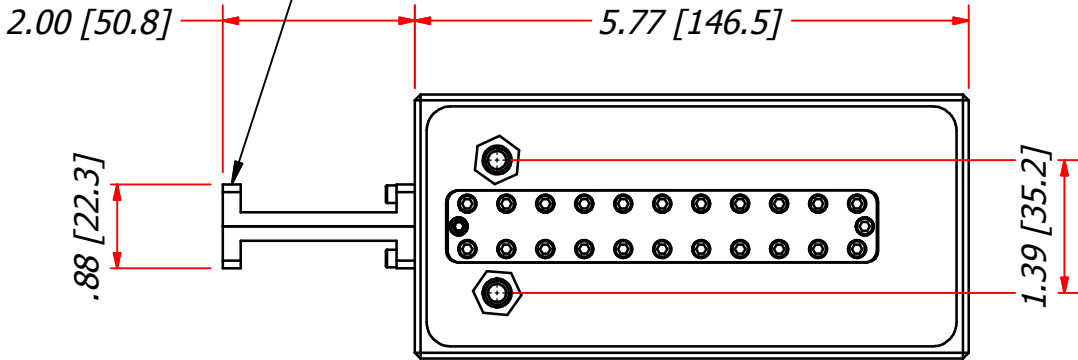
2

1

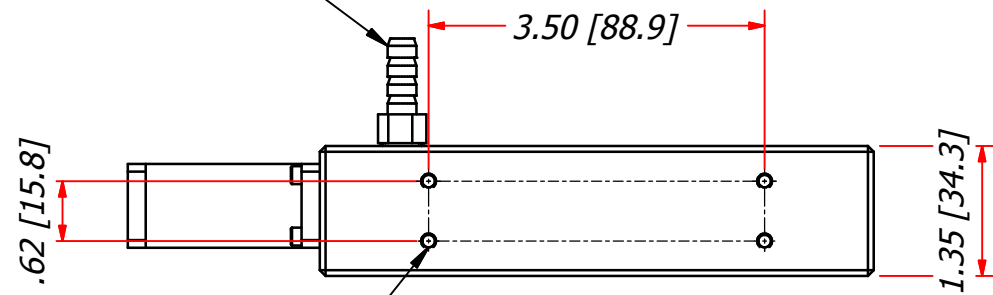
REVISION HISTORY

REV	AUTH	DATE	DESCRIPTION
A	BF	8/13/2009	INITIAL RELEASE

COVER FLANGE

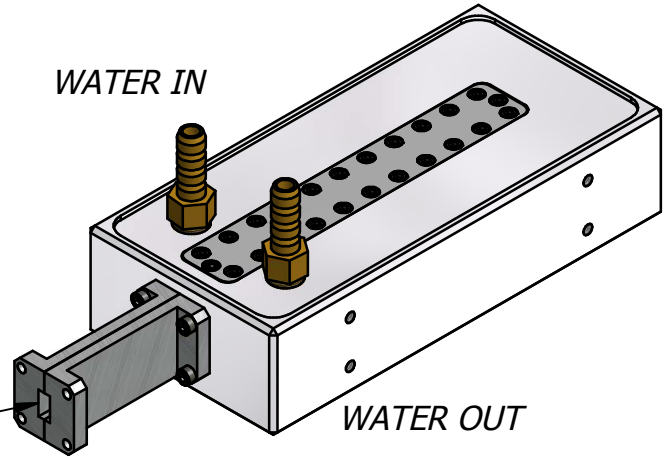


HOSE BARB (2)



8-32 MTG HOLES BOTH SIDES


WATER IN



WATER OUT

WR 34

DIM IN [] ARE MM

MODEL USED ON	QTY	NEXT ASSY	THIRD ANGLE PROJECTION:		APPROVALS	DATE	 ADVANCED TECHNICAL MATERIALS, INC. TEL: (631) 289-0363 FAX: (631) 289-0358 www.atmmicrowave.com			THE INFORMATION IN THIS DRAWING IS PROPRIETARY AND SHALL NOT BE USED OR DISCLOSED WITHOUT THE PRIOR WRITTEN CONSENT OF ATM, INC. DO NOT SCALE DWG.	
			UNLESS OTHERWISE NOTED, DIMENSIONS ARE IN INCHES, TOLERANCES ARE: FRACTIONS: ±1/64 ANGLES: ±1/2°		DRAWN BF CHKD. APRVD.	8-13-09	OUTLINE, WG TERM WR34, WATER COOLED 800W			SIZE A CAGE CODE 0R8N4 MODEL # 34-770-6	REVISION A SHEET 1 OF 1
					BASIC DIMENSION UNDER 6" 6" - 12" OVER 12"	DECIMALS 2 PLACE 3 PLACE ±.02 ±.005 ±.03 ±.010 ±.06 ±.015				MATERIAL ALUM 6061 TREATMENT FINISH HI TEMP BLACK	ATM DWG # 11532

2

1