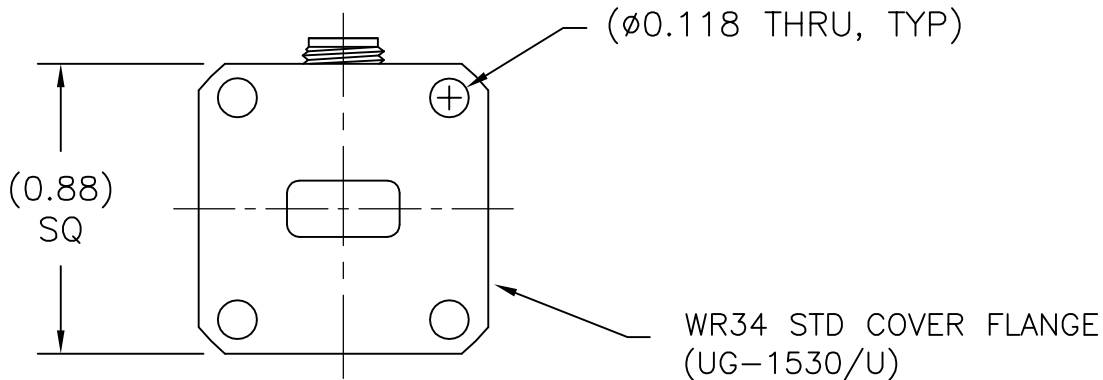
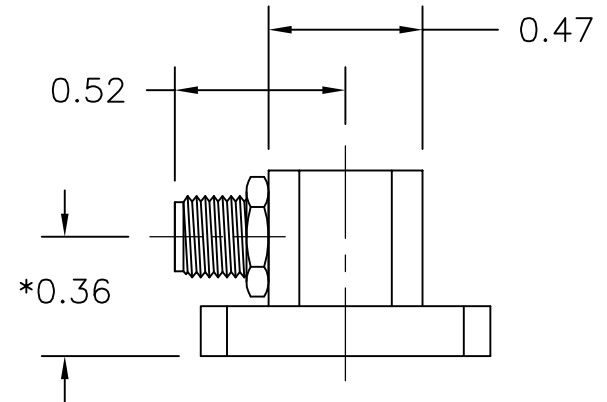
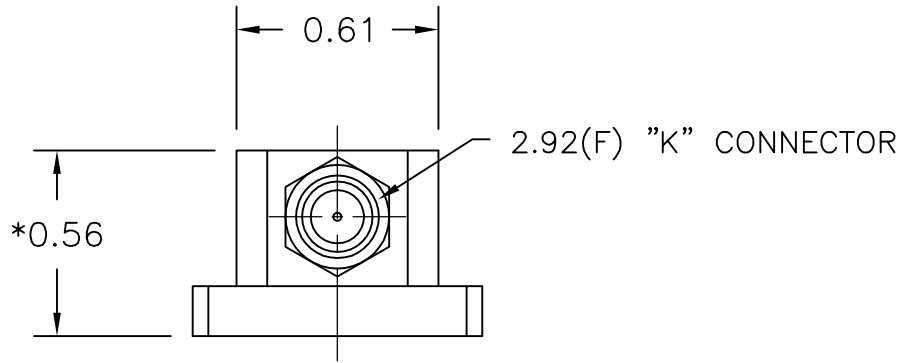


REV A	AUTH DM	DATE 10/17/12	INITIAL RELEASE
B	DM	10/22/13	ADDED NOTE
C	M.R.	04/02/14	LENGTH CORRECTED PER ECN 04-02-14-02
D	M.R.	04/30/14	BODY SIZE CORRECTED PER ECN 04-30-14-01
E	M.R.	12/31/15	UPDATED TO SHOW CONNECTOR LOCK NUT PER ECN 03-25-15-01



**\*NOTE:**

THESE DIMENSIONS ARE BASED ON THE FLANGE TYPE SHOWN ABOVE, AND MAY CHANGE WHEN OTHER FLANGE TYPES ARE SELECTED.

THIRD ANGLE PROJECTION:		APPROVALS	DATE	<b>ADVANCED TECHNICAL MATERIALS, INC.</b> TEL: (631) 289-0363 FAX: (631) 289-0358 www.atmmicrowave.com		<small>THE INFORMATION IN THIS DRAWING IS PROPRIETARY AND SHALL NOT BE USED OR DISCLOSED WITHOUT THE PRIOR WRITTEN CONSENT OF ATM, INC. DO NOT SCALE DWG.</small>			
UNLESS OTHERWISE NOTED, DIMENSIONS ARE IN INCHES, TOLERANCES ARE: FRACTIONS: ±1/64 ANGLES: ±1/2° MACHINED FINISH 63 ✓ OR BETTER		DRAWN <b>DM</b>	10/17/12	<b>OUTLINE</b> <b>WR34 WG-COAX ADAPTER</b>		SIZE <b>A</b>	CAGE CODE <b>OR8N4</b>	ATM DWG # <b>14406</b>	REVISION <b>E</b>
DECIMALS 2 PLACE    3 PLACE		CHKD.				SCALE <b>NONE</b>	MODEL # <b>34-25KA-6</b>	SHEET <b>1/1</b>	
±.01	±.005	APRVD.		MATERIAL <b>ALUMINUM</b>		TREATMENT <b>CHEM FILM</b>			