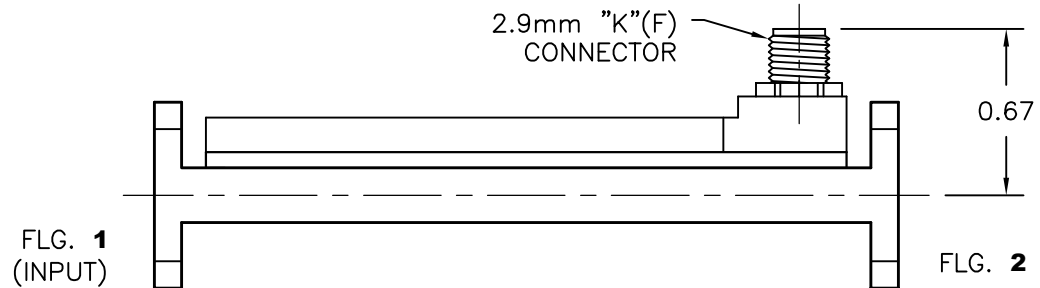
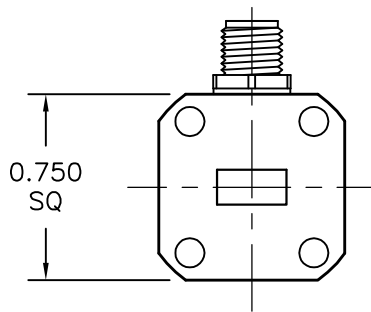
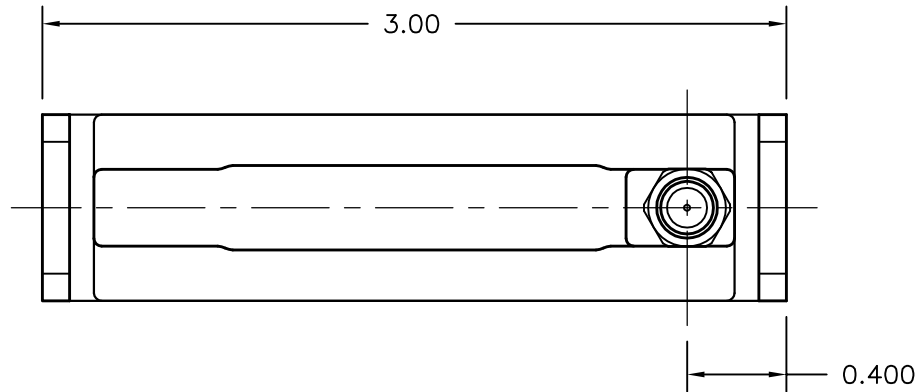


REV A	AUTH DM	DATE 11/11/16	INITIAL RELEASE
----------	------------	------------------	-----------------



MODEL SPECIFICATIONS

MECHANICAL

MODEL NUMBER: 28-337A-XX*-6-6
*SUBSTITUTE WITH DESIRED COUPLING VALUE (dB)

MATERIAL:
BODY: 6061/T-6 ALUM.
CONNECTORS: STAINLESS STEEL
FINISH: UNIQUE CORROSION RESISTANT 316 STAINLESS STEEL EPOXY COATING
FLANGES: WR28 COVER TYPE IS STD*, EQUIV. TO UG 599/U
*OTHER TYPES AVAILABLE.

THIRD ANGLE PROJECTION:		APPROVALS	DATE	ADVANCED TECHNICAL MATERIALS, INC. TEL: (631) 289-0363 FAX: (631) 289-0358 www.atmmicrowave.com		<small>THE INFORMATION IN THIS DRAWING IS PROPRIETARY AND SHALL NOT BE USED OR DISCLOSED WITHOUT THE PRIOR WRITTEN CONSENT OF ATM, INC. DO NOT SCALE DWG.</small>			
UNLESS OTHERWISE NOTED, DIMENSIONS ARE IN INCHES, TOLERANCES ARE: FRACTIONS: ±1/64 ANGLES: ±1/2° MACHINED FINISH 63 ✓ OR BETTER		DRAWN DM	11/11/16	<h2 style="text-align: center;">OUTLINE</h2> <h3 style="text-align: center;">WR28 LOOP COUPLER</h3>		SIZE A	CAGE CODE OR8N4	ATM DWG # 18271	REVISION A
DECIMALS 2 PLACE 3 PLACE		CHKD.				SCALE NONE	MODEL # 28-337-XX-6-6	SHEET 1/1	
±.01	±.005	APRVD.		MATERIAL ALUMINUM		TREATMENT CHEM FILM			