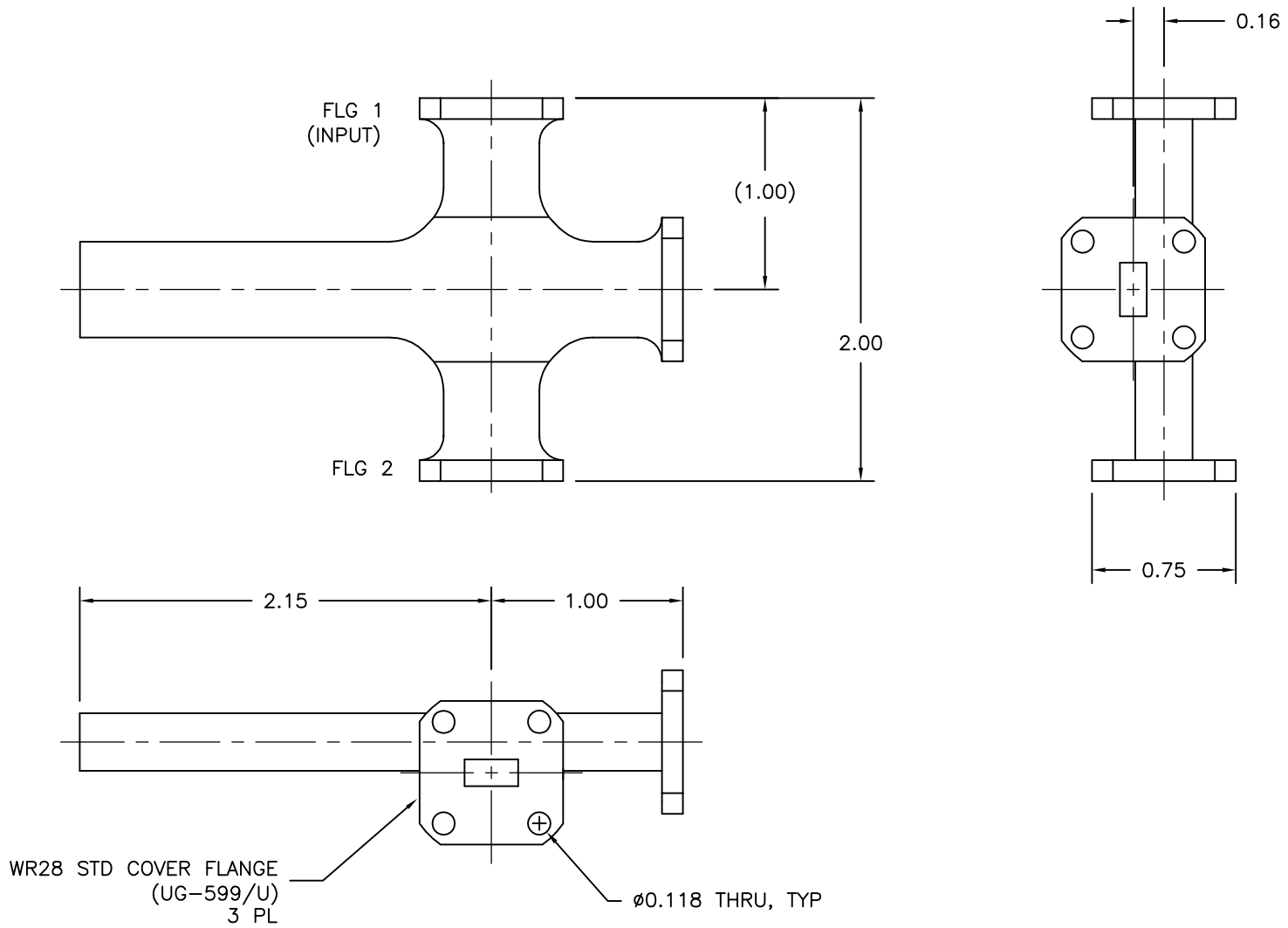


|          |              |                  |                 |
|----------|--------------|------------------|-----------------|
| REV<br>A | AUTH<br>M.R. | DATE<br>04/19/17 | INITIAL RELEASE |
|----------|--------------|------------------|-----------------|



|   |       |                        |  |          |                |   |                    |   |  |
|---|-------|------------------------|--|----------|----------------|---|--------------------|---|--|
| THIRD ANGLE PROJECTION:   |       | APPROVALS              |  | DATE     |                | L-3 Narda - ATM   |                    | THE INFORMATION IN THIS DRAWING IS PROPRIETARY AND SHALL NOT BE USED OR DISCLOSED WITHOUT THE PRIOR WRITTEN CONSENT OF L3 NARDA-ATM, INC. DO NOT SCALE DWG. |  |
| UNLESS OTHERWISE NOTED, DIMENSIONS ARE IN INCHES, TOLERANCES ARE:<br>FRACTIONS: ±1/64 ANGLES: ±1/2°<br>MACHINED FINISH 63 ✓ OR BETTER |       | DRAWN<br>M.R.          |  | 04/19/17 |                | TEL: (631) 289-0363 FAX: (631) 289-0358<br>www.atmmicrowave.com |                    | <b>OUTLINE</b><br>WR28 CROSSGUIDE COUPLER - 3 PORT  |  |
| DECIMALS<br>2 PLACE    3 PLACE  |       | CHKD.                  |  |          | SIZE<br>A      | CAGE CODE<br>OR8N4  | ATM DWG #<br>14963 |   |  |
| ±.01  | ±.005 | APRVD.                 |  |          | SCALE<br>1 : 1 | MODEL #<br>28-301A-XX-6-6                                       |                    | SHEET<br>1/1  |  |
|   |       | MATERIAL<br>ALUM ALLOY |  |          |                |   |                    |   |  |
|   |       | TREATMENT<br>CHEM FILM |  |          |                |   |                    |   |  |
|   |       | ATM STD GRAY           |  |          |                |   |                    |   |  |