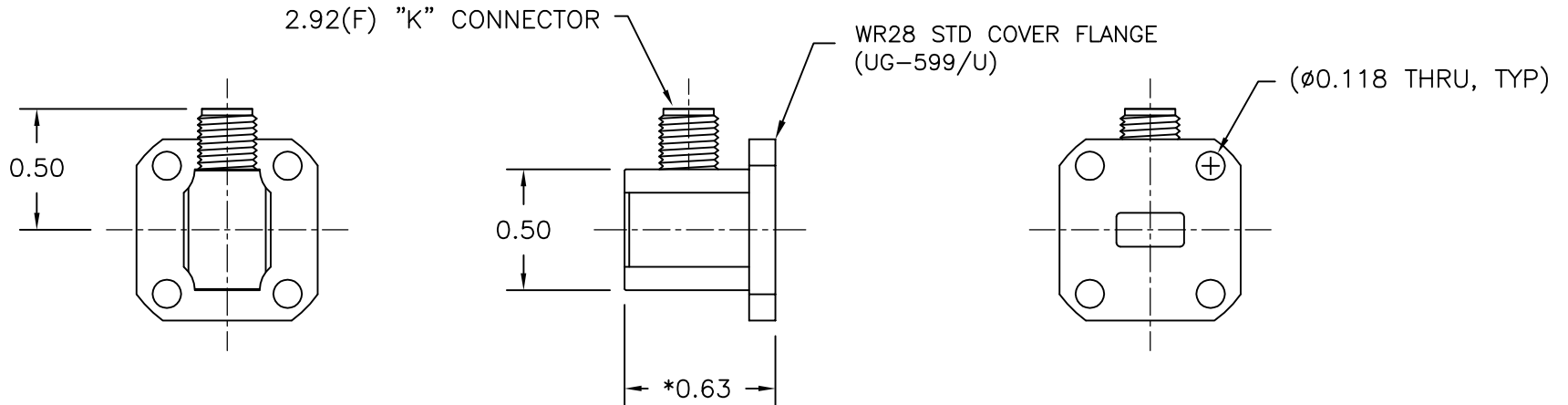
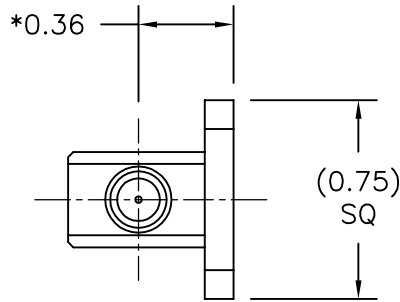


|          |            |                  |   |
|----------|------------|------------------|---|
| REV<br>A | AUTH<br>DM | DATE<br>10/17/12 | INITIAL RELEASE                                 |
| B        | DM         | 10/22/13         | ADDED NOTE                                      |
| C        | LM         | 6/24/14          | CORRECTED MODEL # FROM: 28-25KA-6 TO:28-25KZA-6 |
| D        | M.R.       | 12/17/15         | ADDED APPLICATION TABLE                         |



**\*NOTE:**

THESE DIMENSIONS ARE BASED ON THE FLANGE TYPE SHOWN ABOVE, AND MAY CHANGE WHEN OTHER FLANGE TYPES ARE SELECTED.

| APPLICATION TABLE |                     |          |
|-------------------|---------------------|----------|
| MODEL#            | FREQUENCY RANGE GHz | VSWR dB  |
| 28-25KZA-6        | 26.5-40.0           | 1.25 MAX |
| 28ka-25KA-6       | 27.5-31.0           | 1.21 MAX |
| 28ka-25KPrA-6     | 27.5-31.0           | 1.12 MAX |

|   |       |                            |          |  |                 |   |                   |
|---|-------|----------------------------|----------|--|-----------------|---|-------------------|
| THIRD ANGLE PROJECTION:   |       | APPROVALS                  | DATE     | <b>ADVANCED TECHNICAL MATERIALS, INC.</b><br>TEL: (631) 289-0363 FAX: (631) 289-0358<br>www.atmmicrowave.com |                 | <small>THE INFORMATION IN THIS DRAWING IS PROPRIETARY AND SHALL NOT BE USED OR DISCLOSED WITHOUT THE PRIOR WRITTEN CONSENT OF ATM, INC. DO NOT SCALE DWG.</small> |                   |
| UNLESS OTHERWISE NOTED, DIMENSIONS ARE IN INCHES, TOLERANCES ARE:<br><br>FRACTIONS: ±1/64 ANGLES: ±1/2°<br><br>MACHINED FINISH 63 ✓ OR BETTER |       | DRAWN <b>DM</b>            | 10/17/12 | <h1>OUTLINE</h1> <h2>WR28 WG-COAX ADAPTER</h2>   |                 |   |                   |
|   |       | CHKD.                      |          |  |                 |   |                   |
| DECIMALS<br>2 PLACE    3 PLACE  |       | APRVD.                     |          | SIZE <b>A</b>  | CAGE CODE OR8N4 | ATM DWG # <b>14405</b>  | REVISION <b>D</b> |
|   |       | MATERIAL <b>ALUMINUM</b>   |          | SCALE  | NONE            | MODEL # SEE TABLE   | SHEET <b>1/1</b>  |
| ±.01  | ±.005 | TREATMENT <b>CHEM FILM</b> |          |  |                 |   |                   |
|   |       | FINISH <b>ATM STD GRAY</b> |          |  |                 |   |                   |