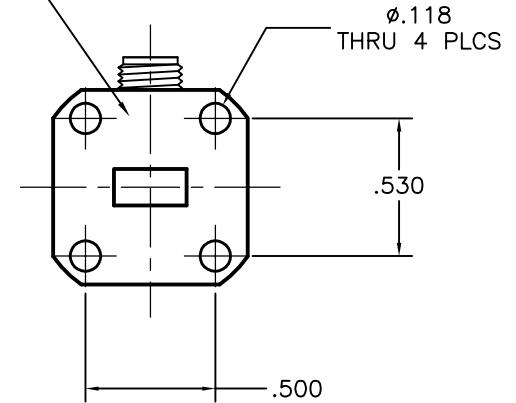
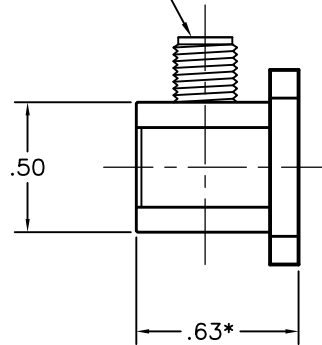
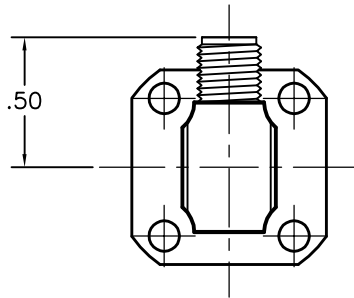


2.92(F) "K" CONNECTOR,  
1/4-36 UNS-2A THD.

STD. WR28 FLANGE,  
(COVER SHOWN)



\*NOTE: DIMENSION MAY CHANGE IF ORDERING  
NON-STANDARD FLANGE TYPE

MODEL SPECIFICATIONS

**MECHANICAL**

MODEL NUMBER: 28-25KPrA-6  
W/G SIZE: WR28  
MATERIAL: PER ORDER (ALUM. OR BRASS)  
BODY: STAINLESS STEEL  
CONNECTORS: UNIQUE CORROSION RESISTANT  
FINISH: 316 STAINLESS STEEL EPOXY COATING  
FLANGES: PER ORDER, COVER TYPE SHOWN

**ELECTRICAL**

FREQ. RANGE: 26.5 - 40.0 GHz  
POWER: 10W CONTINUOUS, 1KW PEAK  
VSWR: 1.15 MAX.

THIRD ANGLE PROJECTION:	UNLESS OTHERWISE NOTED, DIMENSIONS ARE IN INCHES, TOLERANCES ARE: FRACTIONS: ±1/64 ANGLES: ±1/2° MACHINED FINISH 63 ✓ OR BETTER	APPROVALS DRAWN M.R. CHKD. APRVD.	DATE 07/22/13	<b>ADVANCED TECHNICAL MATERIALS, INC.</b> TEL: (631) 289-0363 FAX: (631) 289-0358 www.atmmicrowave.com	THE INFORMATION IN THIS DRAWING IS PROPRIETARY AND SHALL NOT BE USED OR DISCLOSED WITHOUT THE PRIOR WRITTEN CONSENT OF AT&T, INC. DO NOT SCALE DWG.	
	DECIMALS 2 PLACE    3 PLACE	MATERIAL - TREATMENT - FINISH -	WR28 WG-COAX OUTLINE			
	±.01    ±.005	SIZE A CAGE CODE OR8N4 SCALE 1 : 1	ATM DWG # 15074 MODEL # -			REVISION A SHEET 1/1