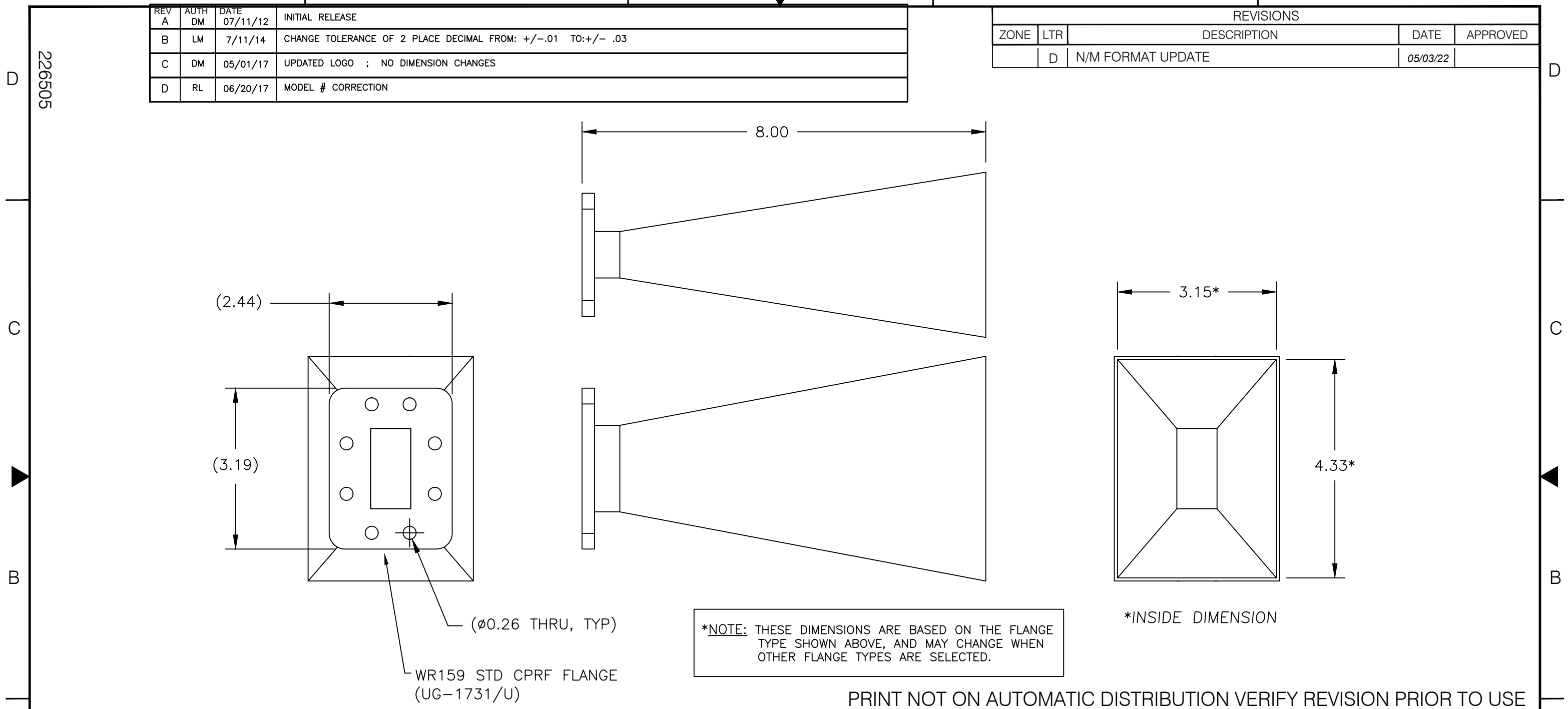


REV	AUTH	DATE	INITIALS
A	DM	07/11/12	INITIAL RELEASE
B	LM	7/11/14	CHANGE TOLERANCE OF 2 PLACE DECIMAL FROM: +/- .01 TO: +/- .03
C	DM	05/01/17	UPDATED LOGO ; NO DIMENSION CHANGES
D	RL	06/20/17	MODEL # CORRECTION

REVISIONS				
ZONE	LTR	DESCRIPTION	DATE	APPROVED
	D	N/M FORMAT UPDATE	05/03/22	



PRINT NOT ON AUTOMATIC DISTRIBUTION VERIFY REVISION PRIOR TO USE

<b>Narda-MITEQ PROPRIETARY</b> THIS DOCUMENT CONTAINS INFORMATION WHICH IS PROPRIETARY TO Narda-MITEQ. THE CONTENTS SHALL NOT BE DISCLOSED, COPIED, DISTRIBUTED, OR USED UNLESS AUTHORIZED BY AN OFFICER OF Narda-MITEQ.	UNLESS OTHERWISE SPECIFIED DIMENSIONS ARE IN INCHES TOLERANCES ON DECIMALS                      ANGLES .XX±.03                      .XXX±.005                      ±0°30'		<b>13983</b> DRN BY: NAME <b>Michael Rotunda</b> DATE <b>03/16/21</b>		 435 MORELAND RD HAUPPAUGE, NY 11788				
	PROJECTION		APPROVED BY						
THESE ITEM(S)/TECHNOLOGY CONTAIN INFORMATION SUBJECT TO U.S. GOVERNMENT EXPORT CONTROL IN ACCORDANCE WITH THE EXPORT ADMINISTRATION REGULATIONS (EAR), 15 CFR PARTS 730-744. EXPORT OF THIS DATA TO ANY FOREIGN COUNTRY OR DISCLOSURE OF THIS DATA TO ANY NON-US PERSON MAY BE A VIOLATION OF FEDERAL LAW.	MATERIAL                      AL ALY		PROJ ENGR		<b>OUTLINE, WR159 15dB GAIN HORN</b>				
	FINISH                      CHEM FILM		MFG ENG						
NEXT ASSY                      USED ON		159-441-2		Q.A.		SIZE                      B	CODE IDENT. NO.                      94S46	226505	REV.                      D
APPLICATION		AUTOCAD FILE FORMAT		SCALE                      REF                      159-441-2		SHEET                      1 OF                      1			

226505

FORM 8 09/2013

AUTOCAD 9-2022