

REV A	AUTH DM	DATE 10/29/13	INITIAL RELEASE
B	DM	10/30/13	ADDED NOTE

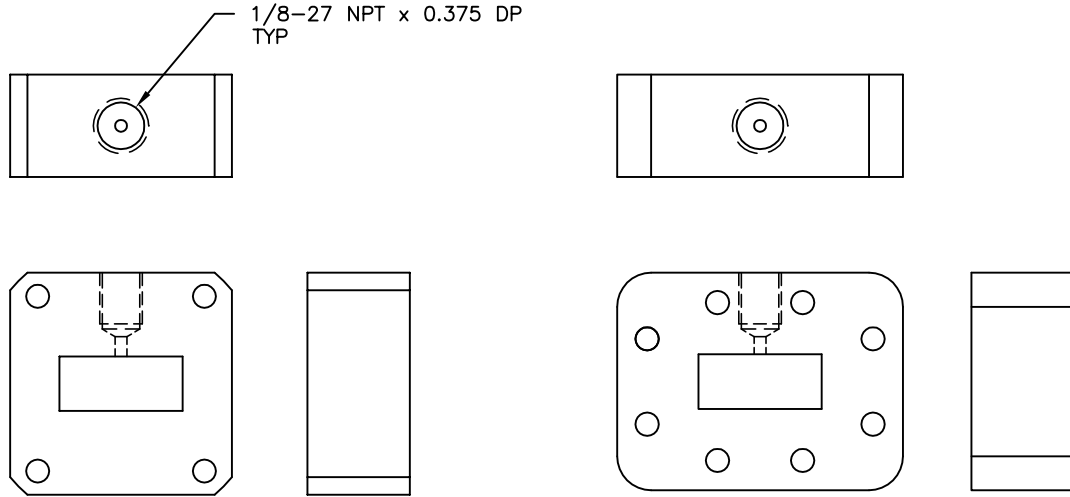


FIG. A

FIG. B

WG SIZE	STANDARD MODEL NO.	FLG THICKNESS	INLET SIZE	STANDARD FLG TYPE	FIG	DASH NO
WR28	28-211A-6-6	0.75"	1/8-27 NPT	COVER/COVER	A	-1
WR34	34-211A-6-6	0.75"	1/8-27 NPT	COVER/COVER	A	-2
WR42	42-211A-6-6	0.75"	1/8-27 NPT	COVER/COVER	A	-3
WR51	51-211A-6-6	0.75"	1/8-27 NPT	COVER/COVER	A	-4
WR62	62-211A-6-6	0.75"	1/8-27 NPT	COVER/COVER	A	-5
WR75	75-211A-6-6	0.75"	1/8-27 NPT	COVER/COVER	A	-6
WR90	90-211A-6-6	0.75"	1/8-27 NPT	COVER/COVER	A	-7
WR102	102-211A-6-6	0.75"	1/8-27 NPT	COVER/COVER	A	-8
WR112	112-211A-6-6	0.75"	1/8-27 NPT	COVER/COVER	A	-9
WR137	137-211A-2-2	0.75"	1/8-27 NPT	CPRF/CPRF	B	-10
WR159	159-211A-2-2	0.75"	1/8-27 NPT	CPRF/CPRF	B	-11
WR187	187-211A-2-2	0.75"	1/8-27 NPT	CPRF/CPRF	B	-13
WR229	229-211A-2-2	0.75"	1/8-27 NPT	CPRF/CPRF	B	-14
WR284	284-211A-2-2	0.75"	1/8-27 NPT	CPRF/CPRF	B	-15
WR340	340-211A-2-2	0.75"	1/8-27 NPT	CPRF/CPRF	B	-16
WR430	430-211A-2-2	0.75"	1/8-27 NPT	CPRF/CPRF	B	-17
WR650	650-211A-2-2	0.75"	1/8-27 NPT	CPRF/CPRF	B	-18

NOTE: FOR FLANGE FACE AND HOLE PATTERN DETAILS, SEE ATM FLANGE SPEC PAGE ON ATM WEBSITE (<http://www.atmmicrowave.com/AtmFlanges.html>)

THIRD ANGLE PROJECTION: UNLESS OTHERWISE NOTED, DIMENSIONS ARE IN INCHES, TOLERANCES ARE: FRACTIONS: ±1/64 ANGLES: ±1/2° MACHINED FINISH 63 ✓ OR BETTER DECIMALS 2 PLACE 3 PLACE ±.01 ±.005	APPROVALS DRAWN DM CHKD. APRVD.	DATE 10/29/13	<b>ADVANCED TECHNICAL MATERIALS, INC.</b> TEL: (631) 289-0363 FAX: (631) 289-0358 www.atmmicrowave.com	THE INFORMATION IN THIS DRAWING IS PROPRIETARY AND SHALL NOT BE USED OR DISCLOSED WITHOUT THE PRIOR WRITTEN CONSENT OF ATM, INC. DO NOT SCALE DWG.			
	MATERIAL ALUMINUM TREATMENT CHEM FILM			<b>OUTLINE</b> FLANGE SPACER INLETS - Tabulated			
	SIZE A SCALE NONE	CAGE CODE OR8N4		ATM DWG # 15527	REVISION B	SHEET 1/1	
	MODEL # SEE TABLE						