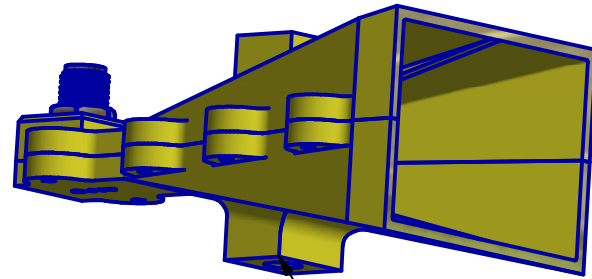
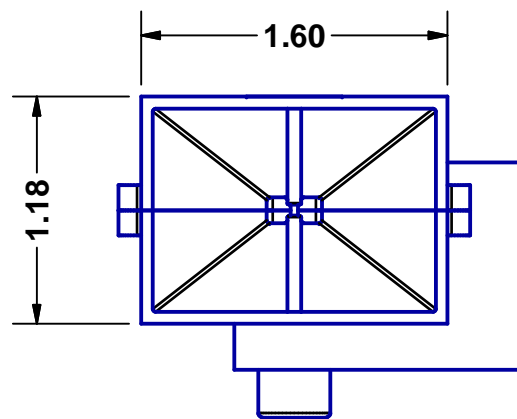


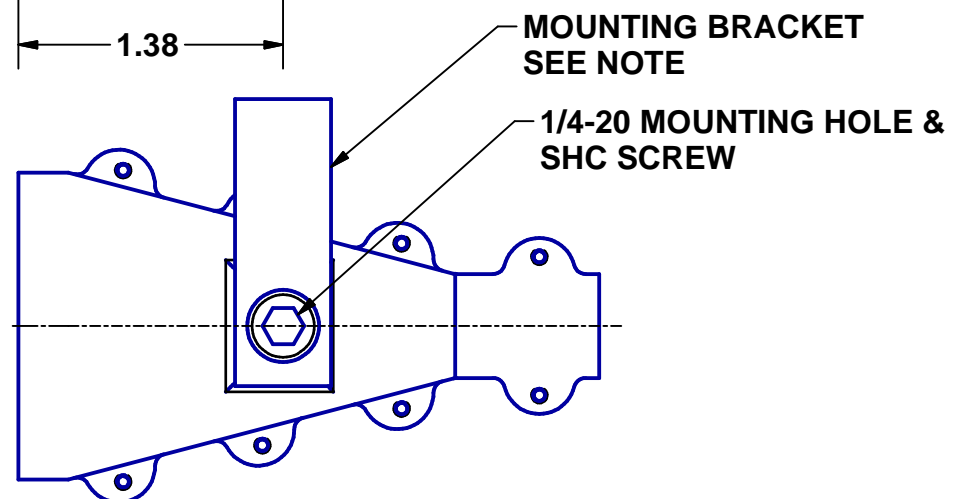
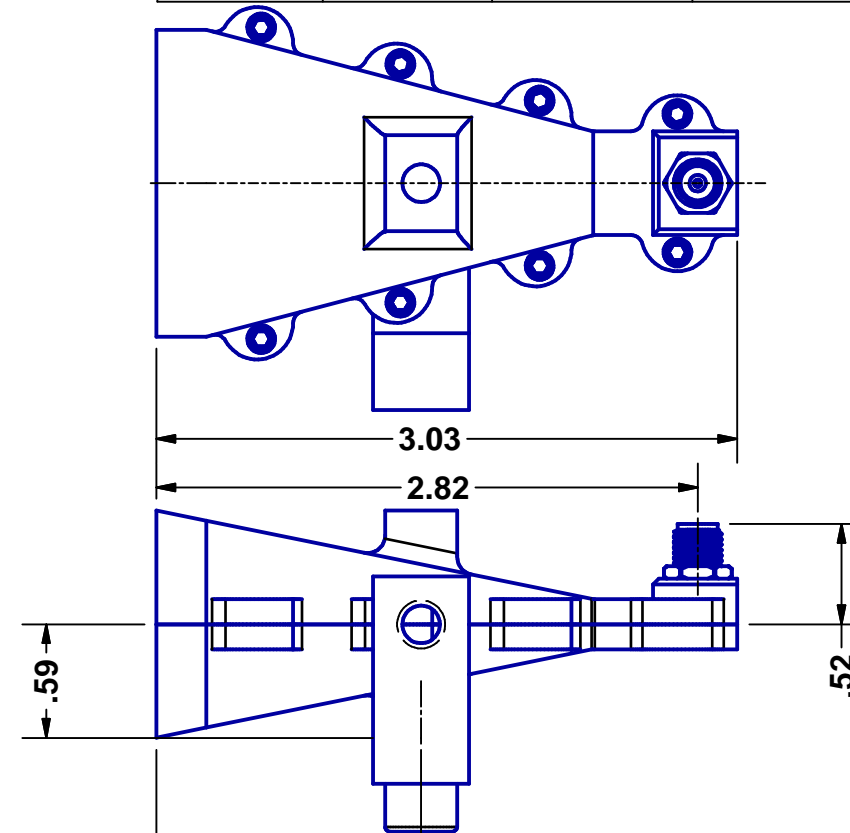
REMOVABLE MOUNTING BRACKET



MOUNTING POST
1/4 FEMALE THREAD



REVISION HISTORY			
REV	AUTH	DATE	DESCRIPTION
A	BF	7-28-16	INITIAL RELEASE
B	BF	1-23-17	MOUNTING BRACKET ADDED
C	BF	3-31-17	ADD MOUNTING BOSS ON OPPOSITE HALF OF HORN- FOR MULTI MOUNT CONFIGURATION OPTION



PERFORMANCE SPECIFICATIONS:

MODEL# 180-442-KF
WG SIZE: WRD180
FREQ: 18.0 - 40.0 GHz
GAIN: 14-19dB (LOW- HIGH FREQ)
CONNECTOR TYPE- K (F)

NOTE: MOUNTING BRACKET AND POST CAN BE UTILIZED FOR BOTH E AND H PLANE.

MODEL NO	QTY	NEXT ASSY	THIRD ANGLE PROJECTION:	APPROVALS	DATE	 L3-NARDA-ATM TEL: (631) 289-0363 FAX: (631) 289-0358 www.atmmicrowave.com OUTLINE, WRD180 WIDE BAND HORN, TYPE-K SIZE B CAGE CODE 0R8N4 ATM DWG # 17911 REVISION C MODEL # SEE FIELD OF DWG SHEET 1 OF 1
			UNLESS OTHERWISE NOTED, DIMENSIONS ARE IN INCHES, TOLERANCES ARE: FRACTIONS: ±1/64 ANGLES: ±1/2°	DRAWN BF 7-28-16		
			DECIMALS 2 PLACE 3 PLACE ±.01 ±.005	CHKD.		
			MACHINED FINISH 63 ✓ OR BETTER	APRVD.		
				MATERIAL ALUM ALLOY		
				TREATMENT IRIDITE		
				FINISH		