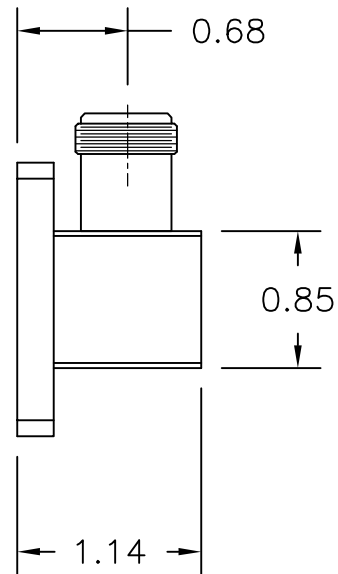
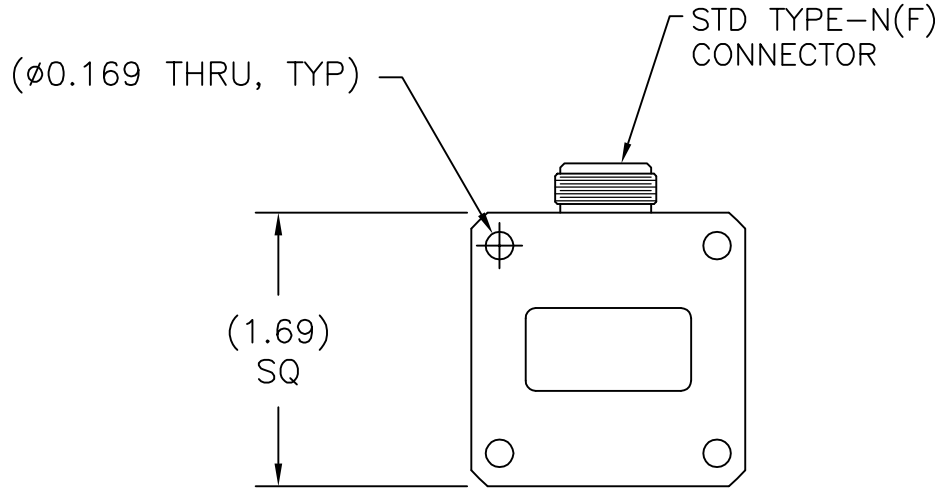
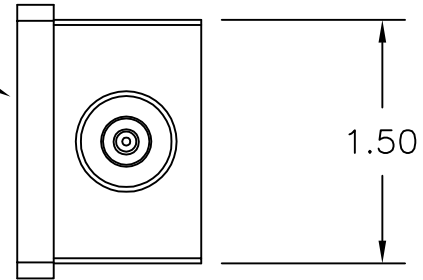


REV A	AUTH M.R.	DATE 09/14/12	INITIAL RELEASE
B	DM	06/04/13	REMOVED PAINT

WR102 STD COVER FLANGE
(MIL-F-3922/70-014)



THIRD ANGLE PROJECTION:		APPROVALS	DATE	ADVANCED TECHNICAL MATERIALS, INC. TEL: (631) 289-0363 FAX: (631) 289-0358 www.atmmicrowave.com		THE INFORMATION IN THIS DRAWING IS PROPRIETARY AND SHALL NOT BE USED OR DISCLOSED WITHOUT THE PRIOR WRITTEN CONSENT OF ATM, INC. DO NOT SCALE DWG.	
UNLESS OTHERWISE NOTED, DIMENSIONS ARE IN INCHES, TOLERANCES ARE: FRACTIONS: $\pm 1/64$ ANGLES: $\pm 1/2^\circ$ MACHINED FINISH 63 \checkmark OR BETTER		DRAWN M.R.	09/14/12	OUTLINE WR102 WG-COAX ADAPTER		REVISION B	
DECIMALS 2 PLACE 3 PLACE		CHKD.				ATM DWG # 14154	
± 0.01 ± 0.005		APRVD.		SCALE NONE		MODEL # 102-253A-6	
		MATERIAL ALUMINUM		CAGE CODE OR8N4		MODEL # 102-253A-6	
		TREATMENT CHEM FILM		SCALE NONE		MODEL # 102-253A-6	