

2

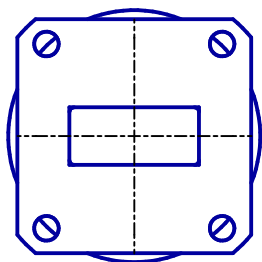
1

## REVISION HISTORY

REV	AUTH	DATE	DESCRIPTION
A	BF	4-29-13	INITIAL RELEASE

**LENGTH PER ORDER**  
**5.50 MINIMUM**

**FLEXIBLE SECTION**  
**@5.50 OVERALL 2.000**



1.05

1.75

.80

**FLEXIBLE WAVEGUIDE SECTION**  
**PROTECTED W/ STAINLESS STEEL ARMOR**  
**(NOT PAINTED)**

MODEL SPECIFICATIONSMECHANICAL

MODEL NUMBER: 90-126-XX-X-X

MATERIAL:


WAVEGUIDE/ FLANGES: BRASS/ COPPER

ARMORED SECTION: STAINLESS STEEL

FINISH:WAVEGUIDE SECTIONS: UNIQUE CORROSION RESISTANT  
316 STAINLESS STEEL EPOXY COATING

ARMORED SECTION: NO PAINT

FLANGES: PER ORDER, COVER TYPE STANDARD

MODEL NO	QTY	NEXT ASSY	THIRD ANGLE PROJECTION:	APPROVALS	DATE	 <b>ADVANCED TECHNICAL MATERIALS, INC.</b> TEL: (631) 289-0363 FAX: (631) 289-0358 www.atmmicrowave.com				<small>THE INFORMATION IN THIS DRAWING IS PROPRIETARY AND SHALL NOT BE USED OR DISCLOSED WITHOUT THE PRIOR WRITTEN CONSENT OF ATM, INC. DO NOT SCALE DWG.</small>	
			UNLESS OTHERWISE NOTED, DIMENSIONS ARE IN INCHES, TOLERANCES ARE: FRACTIONS: $\pm 1/64$ ANGLES: $\pm 1/2^\circ$ DECIMALS 2 PLACE    3 PLACE <b><math>\pm .01</math></b> <b><math>\pm .005</math></b> MACHINED FINISH 63 ✓ OR BETTER	DRAWN BF 4-29-13		<b>OUTLINE, WR90 FLEX WG</b> <b>WITH ARMORED SECTION</b>				REVISION A	SHEET 1 OF 1
				CHKD.							
				APRVD.							
				MATERIAL		SIZE A	CAGE CODE 0R8N4	ATM DWG # 14844			
				TREATMENT		MODEL #	<b>90-126-XX-X-X</b>				
				FINISH							

2

1