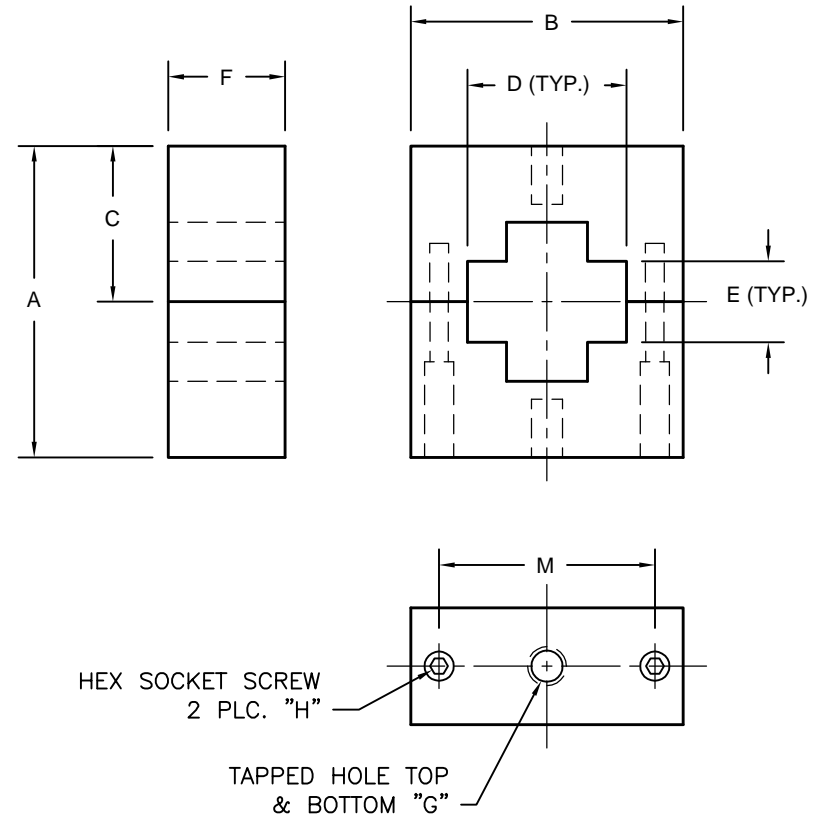


REV A	AUTH -	DATE 09/27/01	INITIAL RELEASE
REV B	AUTH JLE	DATE 12/03/02	ADDED DIMS G, H, AND M. DIMS UPDATED, WR34 & WR340 ADDED.
REV C	AUTH -	DATE 08/23/04	WR28 DIM A: 1.00 WAS: .75
REV D	AUTH -	DATE 02/07/05	CORRECTED TABLE DIMS.
REV E	AUTH -	DATE 05/04/06	WR340 COLUMN 'H' WAS: #10-32 x 1.5, IS: 10-32 x 1.0
REV F	AUTH RL	DATE 11/11/06	COLUMN B CHANGED FROM 1 PL. TO 2 PL. DECIMAL. WR28 'C' .50 WAS: .38. FORMAT UPDATE.
REV G	AUTH RL	DATE 04/18/07	"FINISH" NOTE CHANGED FROM "ATM STD. GREY" TO "BLACK"
REV H	AUTH M.R.	DATE 09/25/09	ADDED WR22 TO TABLE
REV J	AUTH M.R.	DATE 03/07/17	ADDED WR19, WR15, WR12, WR10 TO TABLE. FORMAT UPDATE

WG SIZE	A	B	C	D	E	F	G	H	M
WR430	6.00	6.00	3.00	4.500	2.340	0.75	3/8-16	10-32x1	5.25
WR340	4.50	4.50	2.25	3.580	1.880	0.75	1/4-20	10-32x1 1/2	4.00
WR284	4.50	4.00	2.25	3.030	1.520	0.75	1/4-20	10-32x1	3.50
WR229	3.50	3.50	1.75	2.440	1.290	0.75	1/4-20	10-32x1	3.00
WR187	3.00	3.00	1.50	2.020	1.020	0.75	1/4-20	10-32x1	2.50
WR159/WDR350	2.50	2.63	1.25	1.740	0.950	0.75	1/4-20	10-32x1	2.20
WR137	2.50	2.40	1.25	1.530	0.775	0.75	1/4-20	10-32x1	1.95
WR112	2.50	2.40	1.25	1.280	0.650	0.75	1/4-20	10-32x1	1.95
WR102	2.00	2.00	1.00	1.168	0.658	0.75	1/4-20	10-32x1	1.50
WR90	2.00	1.75	1.00	1.020	0.520	0.75	1/4-20	8-32x1	1.38
WR75 WRD750	2.00	1.75	1.00	0.865	0.490	0.75	1/4-20	8-32x1	1.30
WR62	1.50	1.75	0.75	0.715	0.400	0.50	1/4-20	8-32x3/4	1.30
WR51	1.25	1.50	0.63	0.600	0.350	0.38	10-32	8-32x3/4	1.00
WR42	1.00	1.38	0.50	0.515	0.265	0.25	8-32	4-40x1/2	0.94
WR34	1.00	1.13	0.50	0.435	0.260	0.25	8-32	4-40x1/2	0.81
WR28	1.00	1.00	0.50	0.375	0.240	0.25	8-32	4-40x1/2	0.69
WR22	1.00	1.00	0.50	0.319	0.202	0.25	8-32	4-40x1/2	0.69
WR19	1.00	1.00	0.50	0.278	0.184	0.25	8-32	4-40x1/2	0.69
WR15	0.75	0.75	0.375	0.238	0.164	0.25	8-32	4-40x7/16	0.50
WR12	0.75	0.75	0.375	0.212	0.151	0.25	8-32	4-40x7/16	0.50
WR10	0.75	0.75	0.375	0.190	0.140	0.25	8-32	4-40x7/16	0.50



THIRD ANGLE PROJECTION:	APPROVALS	DATE			L-3 Narda - ATM TEL: (631) 289-0363 FAX: (631) 289-0358 www.atmmicrowave.com	<small>THE INFORMATION IN THIS DRAWING IS PROPRIETARY AND SHALL NOT BE USED OR DISCLOSED WITHOUT THE PRIOR WRITTEN CONSENT OF ATIL, INC. DO NOT SCALE DWG.</small>
UNLESS OTHERWISE NOTED, DIMENSIONS ARE IN INCHES, TOLERANCES ARE:  FRACTIONS: ±1/64 ANGLES: ±1/2°  MACHINED FINISH 63 √ OR BETTER	DRAWN J.L.E.	12/03/02	<b>OUTLINE</b> <b>WAVEGUIDE CLAMP / HANGER. TABULATED</b>			
	CHKD.					
DECIMALS 2 PLACE 3 PLACE  ±.01 ±.005	APRVD.		SIZE A	CAGE CODE OR8N4	ATM DWG # 4572W	REVISION J
	MATERIAL ALUMINUM		SCALE 1 : 1	MODEL # XX-EH/C+		SHEET 1/1
	TREATMENT -					
	FINISH CHEM FILM					