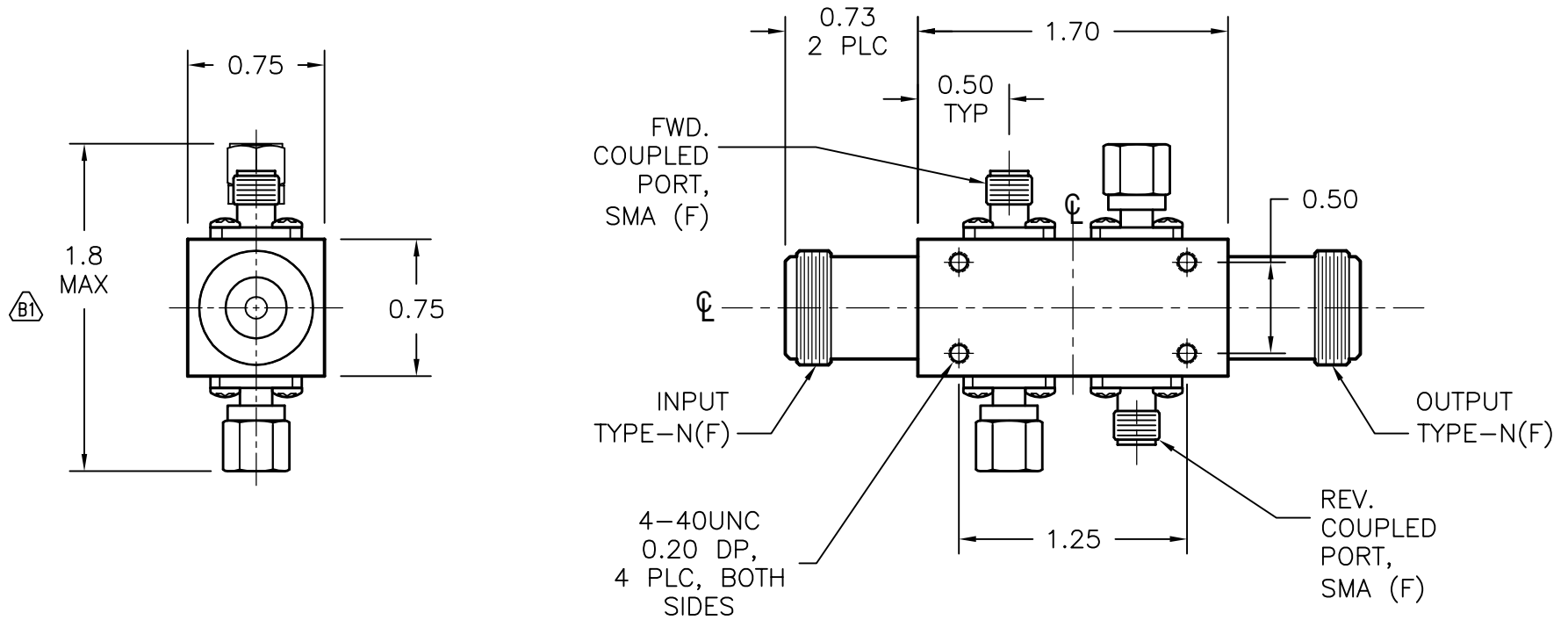


REV A	AUTH M.R.	DATE 02/16/17	INITIAL RELEASE
REV B	AUTH R.L.	DATE 05/12/06	REDRAWN TO SHOW SMA CONNECTORS AT COUPLED PORTS, WERE TYPE-N. $\triangle B1$ WAS: 2.75 MAX..
REV C	AUTH M.R.	DATE 11/13/06	MOUNTING HOLES CHANGED, WERE: #4-40 TAP x 4 PLC.
REV D	AUTH M.R.	DATE 08/20/10	MODEL# CORRECTED IN TITLE, WAS CHP235H-35
REV E	AUTH M.R.	DATE 02/16/17	PER E.C.N. 12-06-16-01. MOUNTING HOLES CHANGED. WERE #0.130 THRU 2 PLC.



THIRD ANGLE PROJECTION:		APPROVALS	DATE			L-3 Narda - ATM TEL: (631) 289-0363 FAX: (631) 289-0358 www.atmmicrowave.com		<small>THE INFORMATION IN THIS DRAWING IS PROPRIETARY AND SHALL NOT BE USED OR DISCLOSED WITHOUT THE PRIOR WRITTEN CONSENT OF AT&amp;M, INC. DO NOT SCALE DWG.</small>	
UNLESS OTHERWISE NOTED, DIMENSIONS ARE IN INCHES, TOLERANCES ARE:  FRACTIONS: $\pm 1/64$ ANGLES: $\pm 1/2^\circ$  MACHINED FINISH 63 $\sqrt$ OR BETTER		DRAWN R.L.	07/22/02			OUTLINE DIRECTIONAL COUPLER, TYPE-N		SIZE A CAGE CODE OR8N4 ATM DWG # 5047W REVISION E	
		CHKD.							
DECIMALS 2 PLACE 3 PLACE		APRVD.		MATERIAL -		TREATMENT CHEM FILM			
$\pm 0.01$ $\pm 0.005$				FINISH STD GRAY					