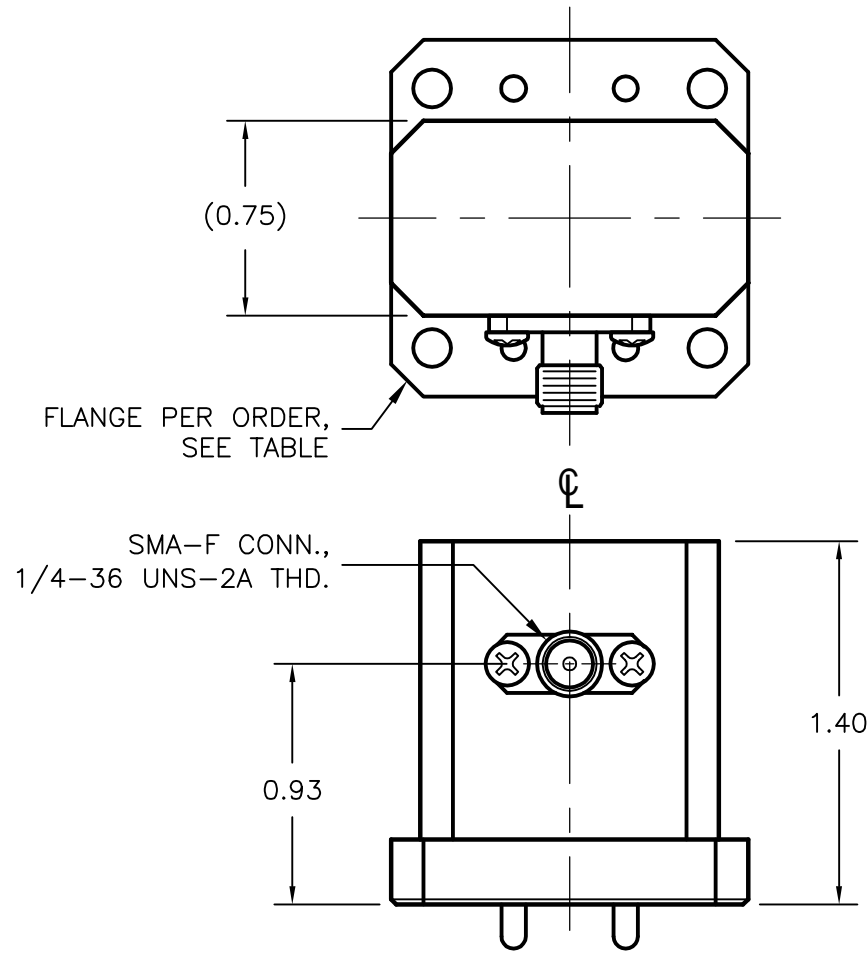
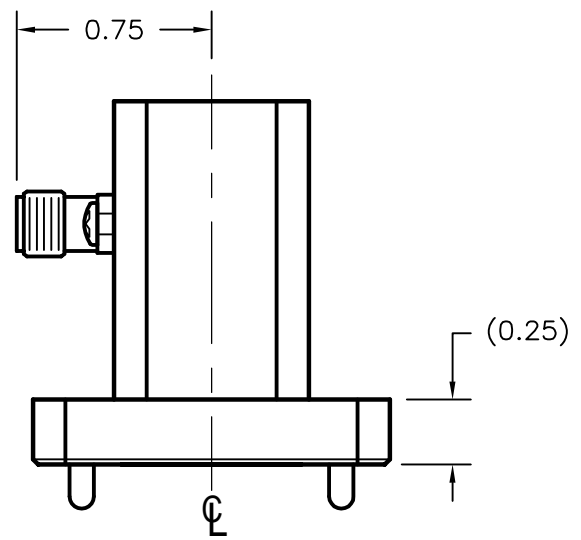


REV A	AUTH RL	DATE MM/DD/03	INITIAL RELEASE
REV B	AUTH RL	DATE 2/11/04	UPDATED DESIGN, DIM: .75 WAS: .82; 1.4 WAS: 1.29; .93
REV C	AUTH JLE	DATE 12/12/02	EXTERIOR MODIFIED FOR COMPATIBILITY WITH '253' HOUSING, FITTED FOR SMA CONN. MOUNTING.
REV D	AUTH RL	DATE 09/19/06	FORMAT UPDATE, DWG REDESIGNATED FOR WEB, SMA CONN. UPDATED
REV E	AUTH M.R.	DATE 11/12/09	ADDED REF DIMENSIONS. 2 PLC



*DOUBLE RIDGE FLANGE TYPES		
DESIGNATION	TYPE	HOLE PATTERN
C1	COVER	ALL THRU/TAPPED
C2		ALL TAPPED
C3		ALL THROUGH
G1	GROOVE	ALL THRU/TAPPED
G2		ALL TAPPED
G3		ALL THROUGH



PERFORMANCE SPECIFICATIONS

MODEL NUMBER: 750-251-FLANGE TYPE*
 WG SIZE: WRD750
 FREQ: 7.5 - 18.0 GHz
 MAX. VSWR: 1.25
 FLANGE TYPE: SEE TABLE
 FINISH: UNIQUE CORROSION RESISTANT
 316 STAINLESS STEEL EPOXY

THIRD ANGLE PROJECTION:		APPROVALS	DATE	ADVANCED TECHNICAL MATERIALS, INC. TEL: (631) 289-0363 FAX: (631) 289-0358 www.atmmicrowave.com	<small>THE INFORMATION IN THIS DRAWING IS PROPRIETARY AND SHALL NOT BE USED OR DISCLOSED WITHOUT THE PRIOR WRITTEN CONSENT OF ATM, IN DO NOT SCALE DWG.</small>
UNLESS OTHERWISE NOTED, DIMENSIONS ARE IN INCHES, TOLERANCES ARE: FRACTIONS: ±1/64 ANGLES: ±1/2°		DRAWN RL	09/18/06		
BASIC DIMENSION	DECIMALS 2 PLACE 3 PLACE	CHKD.	APRVD.	OUTLINE, WRD750 SMA - WAVEGUIDE ADAPTER	
UNDER 6"	±.02 ±.005	MATERIAL ALUM.			
6" - 12"	±.03 ±.010	TREATMENT IRIDITE			
OVER 12"	±.06 ±.015	SEE NOTES		SIZE A CAGE CODE OR8N4 ATM DWG # 5384W REVISION E SCALE NONE MODEL # 750-251-XX SHEET 1/1	