

REV A	AUTH MR	DATE 05/11/15	INITIAL RELEASE
REV B	AUTH MR	DATE 05/13/15	ELECTRICAL SPEC TYPOS CORRECTED,

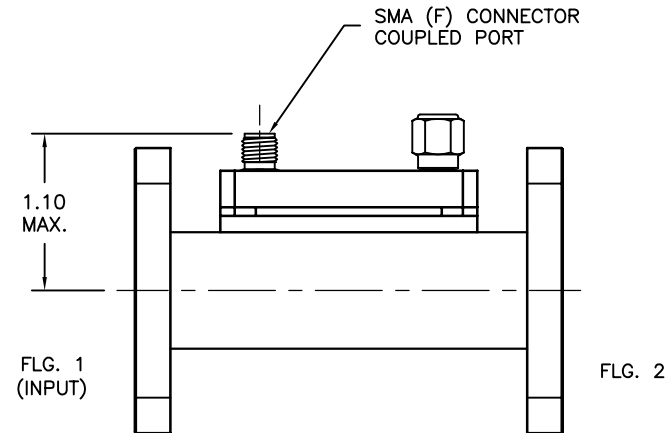
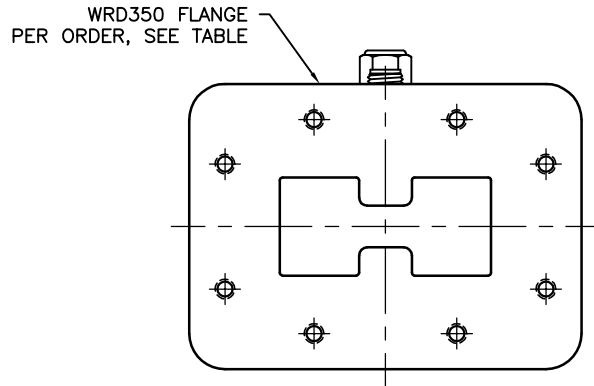
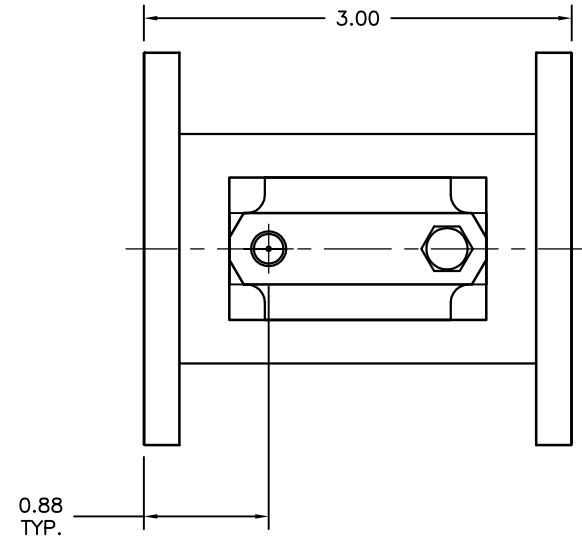
MODEL SPECIFICATIONS

MECHANICAL

MODEL NUMBER: 350-307-dB*-FLANGE 1-FLANGE 2
 MATERIAL: 6061/T-6 ALUM. STD.
 CONNECTORS: STAINLESS STEEL
 FINISH: UNIQUE CORROSION RESISTANT
 316 STAINLESS STEEL EPOXY COATING
 FLANGES: TYPE C2 STANDARD, SEE TABLE

ELECTRICAL

FREQ. RANGE: 3.5-8.2 GHz
 VSWR: 1.07 MAX.
 COAXIAL: 1.50 MAX.
 COUPLING: 30, 40, 50, & 60 STD.
 NOMINAL COUPLING: +/- 1.00 dB TYP.
 FREQ. SENSITIVITY: +/- 1.50 dB
 DIRECTIVITY: 12dB MIN., 15dB TYP.



DOUBLE RIDGE FLANGE TYPES		
DESIGNATION	TYPE	HOLE PATTERN
C1	COVER	ALL THRU/TAPPED
C2		ALL TAPPED
C3		ALL THROUGH
G1	GROOVE	ALL THRU/TAPPED
G2		ALL TAPPED
G3		ALL THROUGH

THIRD ANGLE PROJECTION:		APPROVALS	DATE	ADVANCED TECHNICAL MATERIALS, INC. TEL: (631) 289-0363 FAX: (631) 289-0358 www.atmmicrowave.com	<small>THE INFORMATION IN THIS DRAWING IS PROPRIETARY AND SHALL NOT BE USED OR DISCLOSED WITHOUT THE PRIOR WRITTEN CONSENT OF AT&M, INC. DO NOT SCALE DWG.</small>
UNLESS OTHERWISE NOTED, DIMENSIONS ARE IN INCHES, TOLERANCES ARE: FRACTIONS: ±1/64 ANGLES: ±1/2° MACHINED FINISH 63 ✓ OR BETTER		DRAWN MR CHKD. APRVD.	05/11/15		
DECIMALS 2 PLACE 3 PLACE ±.01 ±.005		MATERIAL TREATMENT		OUTLINE WRD350 LOOP COUPLER – SMA	
SIZE A	CAGE CODE OR8N4	ATM DWG #	13075	REVISION	B
SCALE	NONE	MODEL #		SHEET	1/1