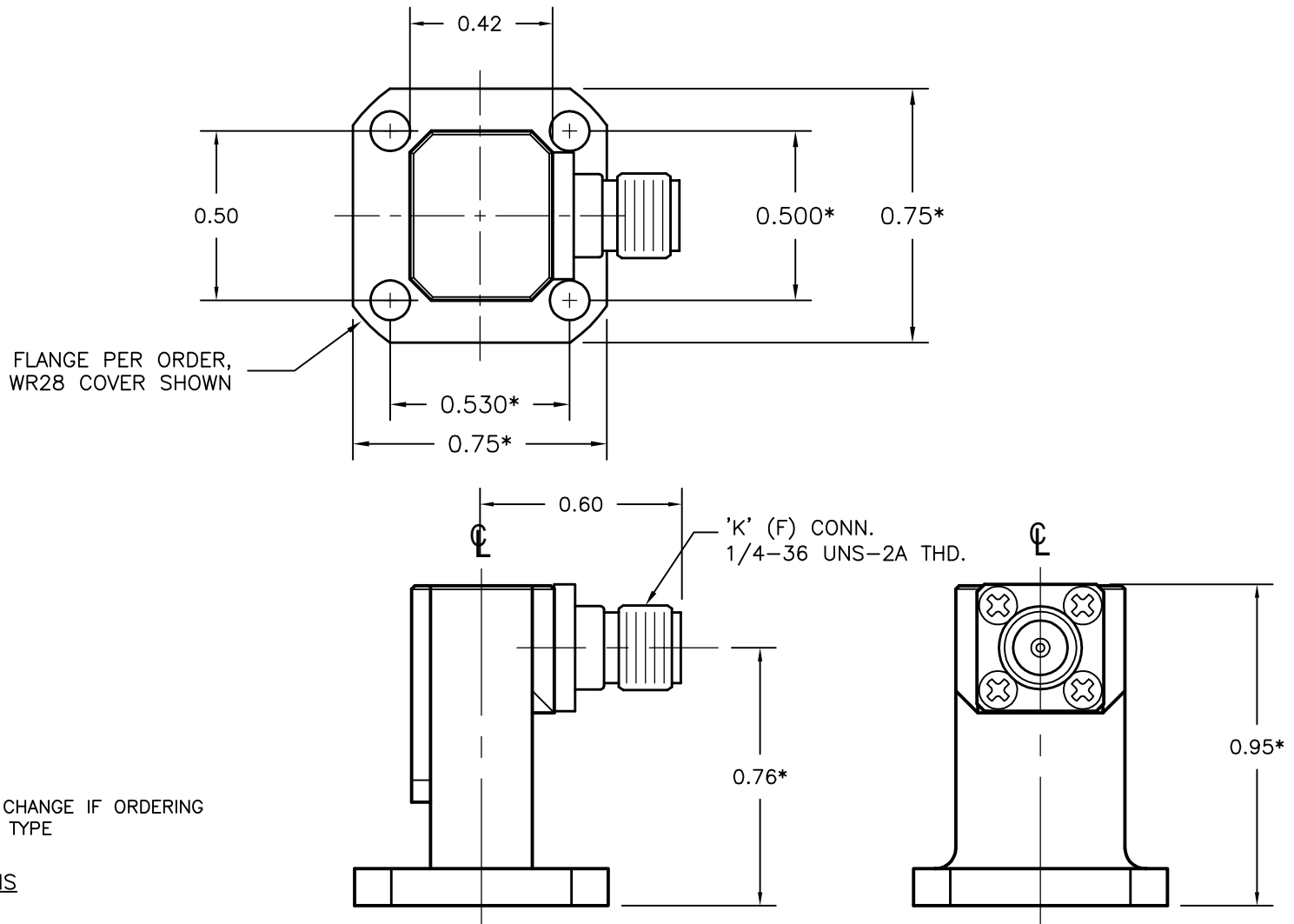


REV A	AUTH RL	DATE 10/06/04	INITIAL RELEASE
B	LM	6/24/14	CHANGED MODEL #. WAS 28-25KX-X IS: 28-25KA-6



*NOTE: DIMENSION MAY CHANGE IF ORDERING NON-STANDARD FLANGE TYPE

MODEL SPECIFICATIONS

MECHANICAL

MODEL NUMBER: 28-25KX-X
W/G SIZE: WR28
MATERIAL: PER ORDER
BODY: STAINLESS STEEL
CONNECTORS: UNIQUE CORROSION RESISTANT
FINISH: 316 STAINLESS STEEL EPOXY COATING
FLANGES: PER ORDER, COVER TYPE SHOWN

ELECTRICAL

FREQ. RANGE: 26.5 - 40.0 GHz
POWER: 10W CONTINUOUS, 1KW PEAK
VSWR: 1.25 MAX.

THIRD ANGLE PROJECTION:		APPROVALS	DATE	ADVANCED TECHNICAL MATERIALS, INC. TEL: (631) 289-0363 FAX: (631) 289-0358 www.atmmicrowave.com		<small>THE INFORMATION IN THIS DRAWING IS PROPRIETARY AND SHALL NOT BE USED OR DISCLOSED WITHOUT THE PRIOR WRITTEN CONSENT OF AT&T, INC. DO NOT SCALE DWG.</small>	
UNLESS OTHERWISE NOTED, DIMENSIONS ARE IN INCHES. TOLERANCES ARE: FRACTIONS: ±1/64 ANGLES: ±1/2°		DRAWN RL	10/06/04	OUTLINE, WR28 W/G-COAX ADAPTER, TYPE-K			
BASIC DIMENSION		CHKD.					
DECIMALS 2 PLACE 3 PLACE		APRVD.					
UNDER 6"	±.02 ±.005	MATERIAL PER ORDER		SIZE A	CAGE CODE OR8N4	ATM DWG # 7024W	REVISION B
6" - 12"	±.03 ±.010	TREATMENT -		SCALE 2 : 1	MODEL # 28-25KA-6		SHEET 1/1
OVER 12"	±.06 ±.015	SEE NOTES					