

4

3

2

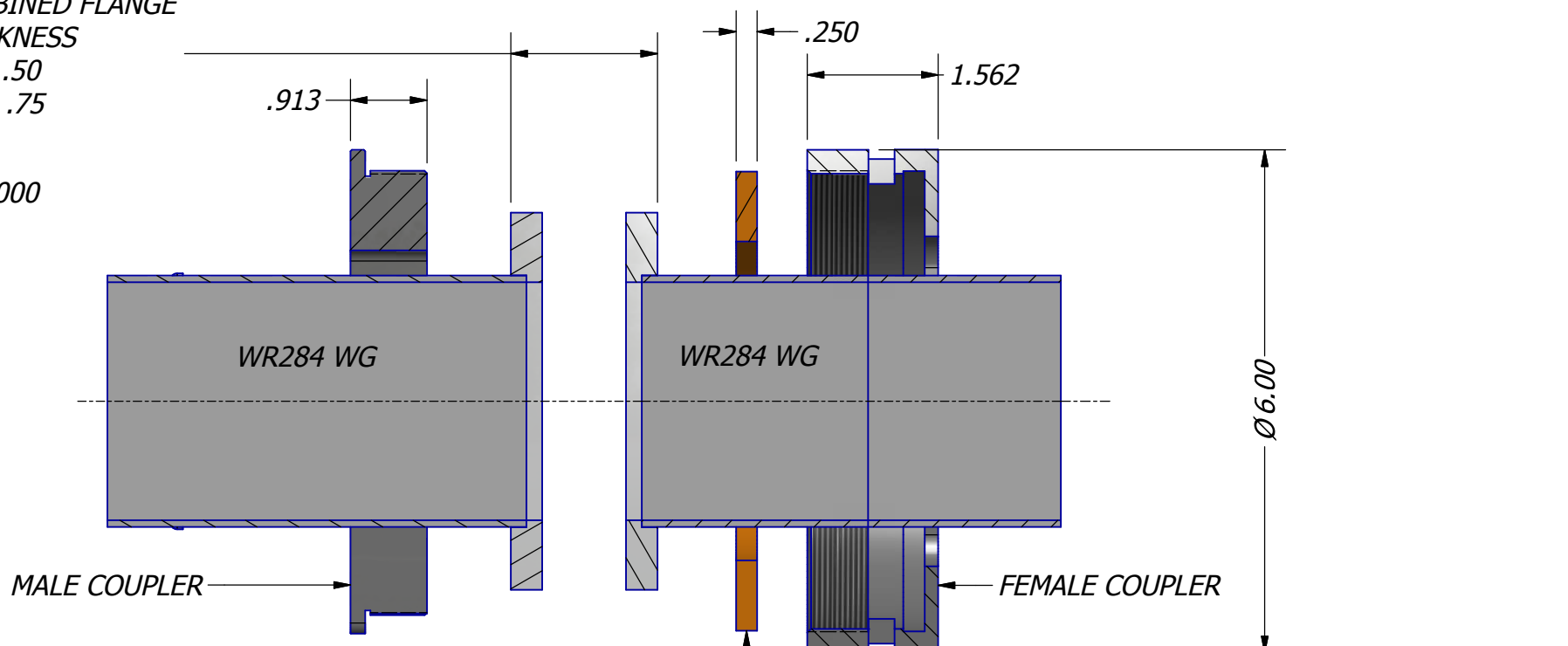
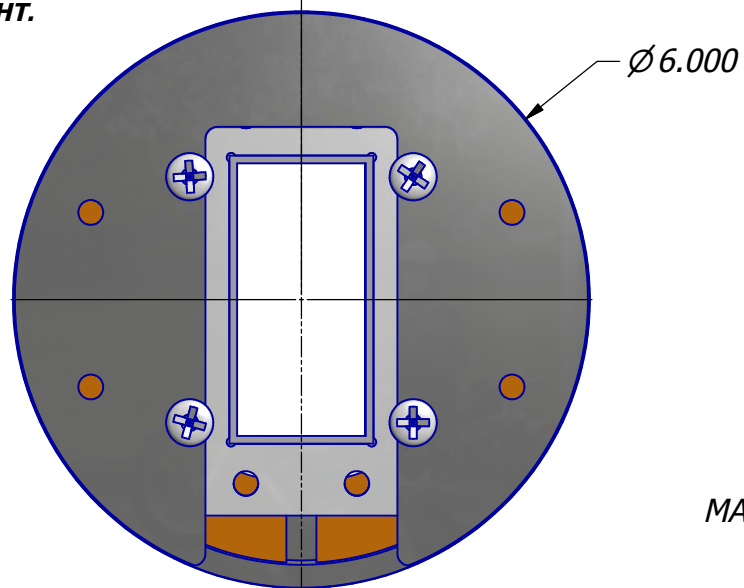
1

- NOTES:**
1. MOUNT MALE COUPLER TO FLANGE WITH SCREWS PROJECTING FOR ALIGNMENT. FLANGE MUST BE TAPPED.
 2. MOUNT RETAINER RING TO FEMALE COUPLER, SNAP FIT.
 3. CUT NYLON SCREWS TO LENGTH SO AS NOT TO PROTRUDE THROUGH MATING FLANGE.
 4. MATE FLANGES AND SCREW TIGHT.

REVISION HISTORY			
REV	AUTH	DATE	DESCRIPTION
A	BF	7-2-12	INITIAL RELEASE

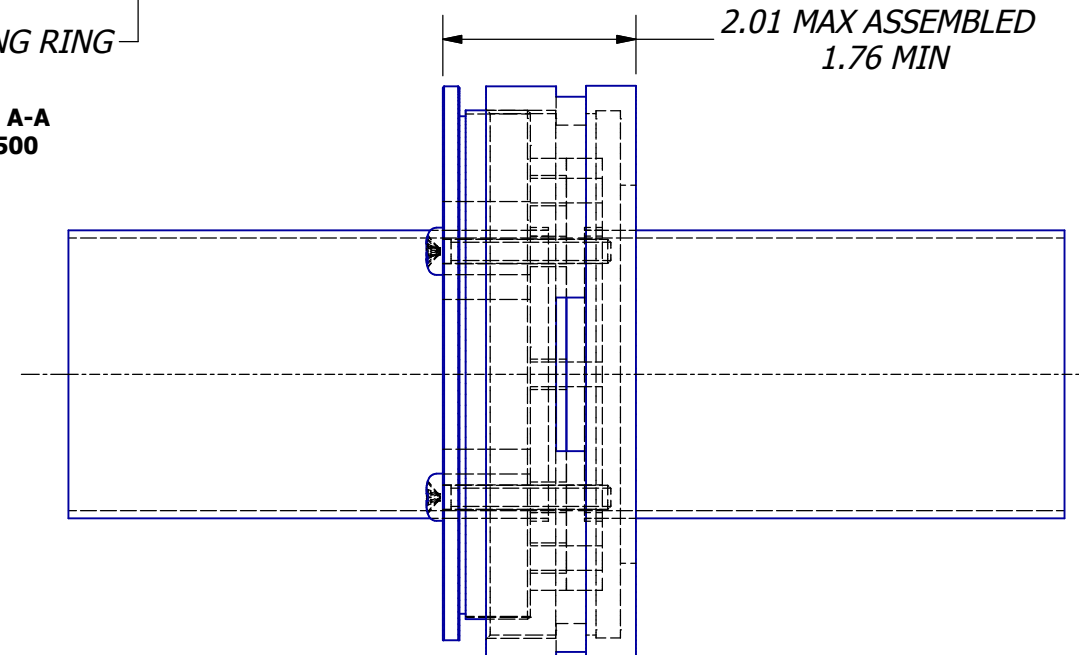
COMBINED FLANGE THICKNESS
MIN: .50
MAX: .75

B

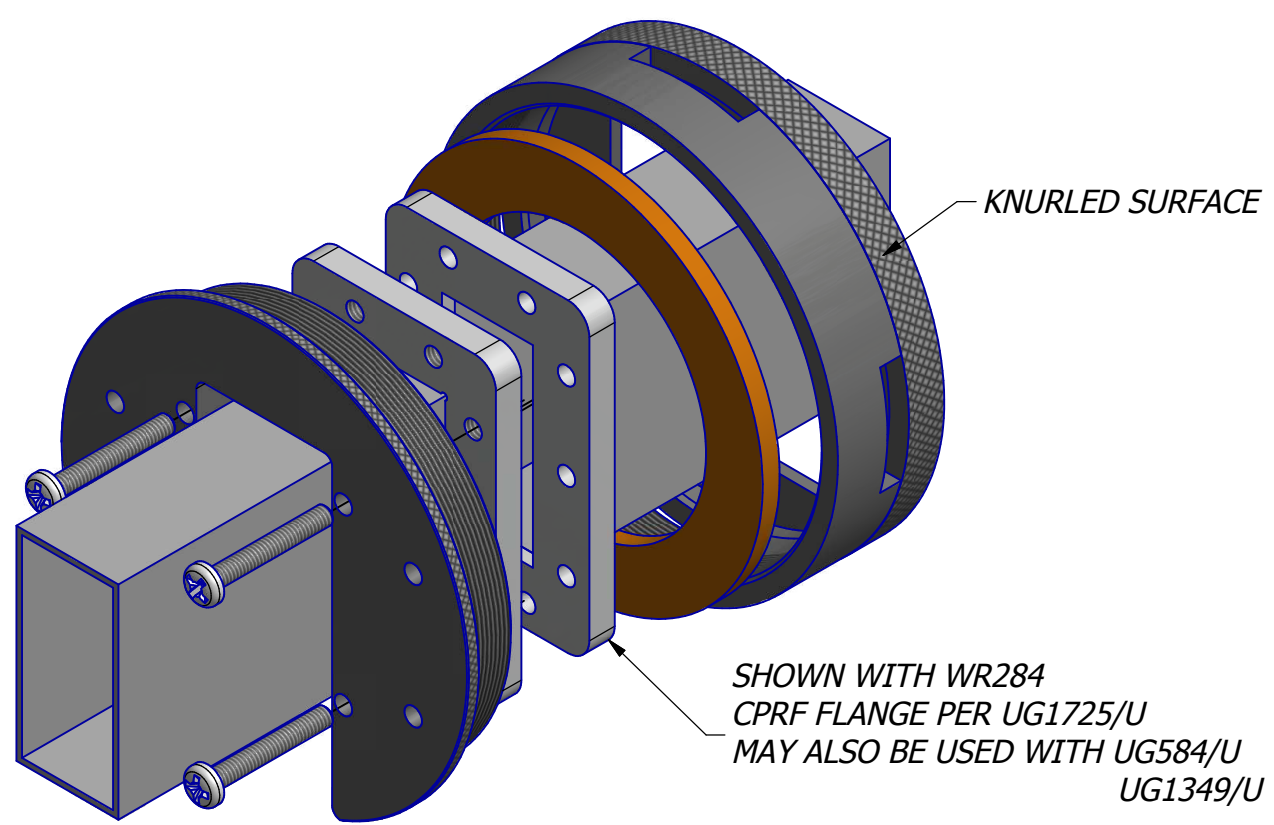


B

SECTION A-A
SCALE .500



A



A

4

3

2

1

MODEL NO	QTY	NEXT ASSY	THIRD ANGLE PROJECTION:	APPROVALS	DATE	ATM ADVANCED TECHNICAL MATERIALS, INC. TEL: (631) 289-0363 FAX: (631) 289-0358 www.atmmicrowave.com		
			UNLESS OTHERWISE NOTED, DIMENSIONS ARE IN INCHES. TOLERANCES ARE: FRACTIONS: ±1/64 ANGLES: ±1/2°	DRAWN BF	7-2-12	OUTLINE, WR284 QUICK DISCONNECT SIZE B CAGE CODE 0R8N4 ATM DWG # 14172 REVISION A MODEL # QD-284 SHEET 1 of 1		
				CHKD.				
			DECIMALS 2 PLACE 3 PLACE	APRVD.				
			±.01 ±.005	MATERIAL 6061-AL ALY				
			MACHINED FINISH 63 ✓ OR BETTER	TREATMENT				
				FINISH BLOACK ANODIZE				

THE INFORMATION IN THIS DRAWING IS PROPRIETARY AND SHALL NOT BE USED OR DISCLOSED WITHOUT THE PRIOR WRITTEN CONSENT OF ATM, INC. DO NOT SCALE DWG.