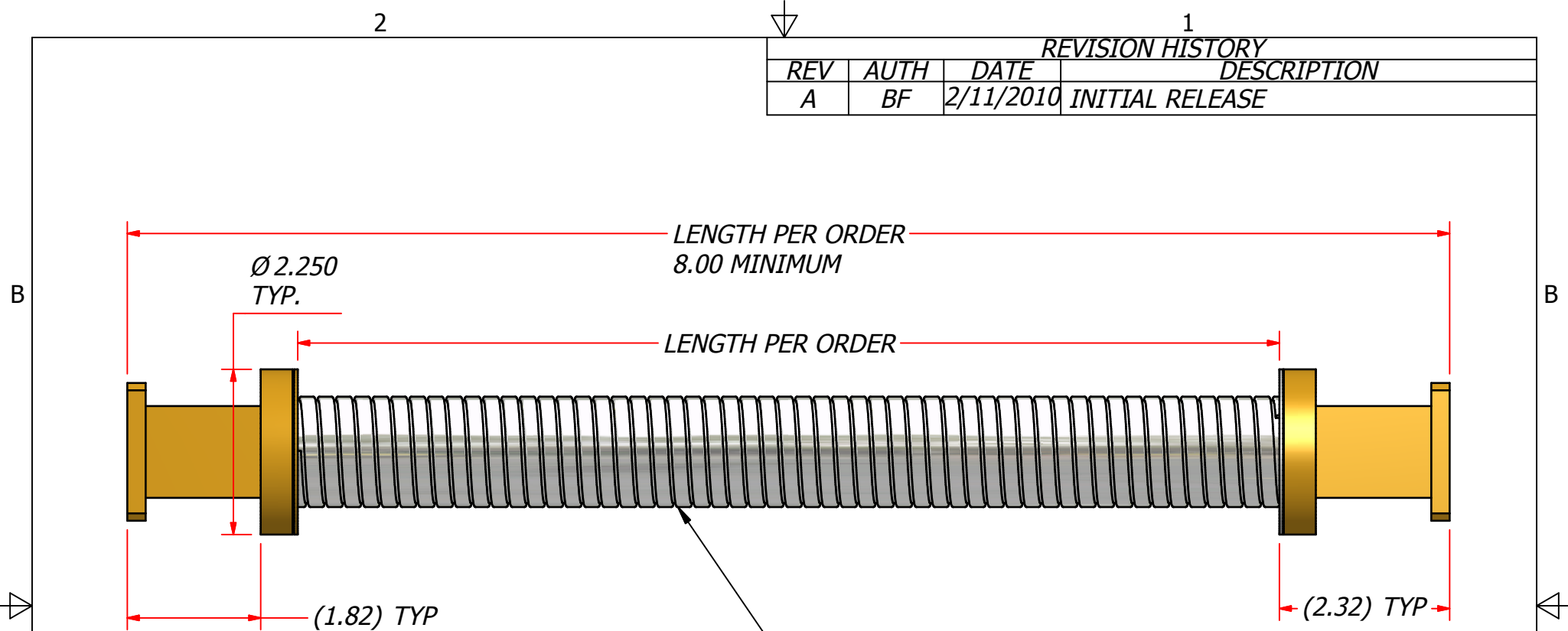



REVISION HISTORY			
REV	AUTH	DATE	DESCRIPTION
A	BF	2/11/2010	INITIAL RELEASE



**FLEXIBLE WAVEGUIDE SECTION
PROTECTED W/ STAINLESS STEEL ARMOR
(NOT PAINTED)**

MODEL SPECIFICATIONS

MECHANICAL
MODEL NUMBER: 112-126-(L)-X-X
MATERIAL:
WAVEGUIDE/ FLANGES: BRASS/ COPPER
ARMORED SECTION: STAINLESS STEEL
FINISH:
WAVEGUIDE SECTIONS: UNIQUE CORROSION RESISTANT
 316 STAINLESS STEEL EPOXY COATING
ARMORED SECTION: NO PAINT
FLANGES: PER ORDER, COVER TYPE STANDARD

MODEL NO	QTY	NEXT ASSY	THIRD ANGLE PROJECTION:	APPROVALS	DATE	 ADVANCED TECHNICAL MATERIALS, INC. TEL: (631) 289-0363 FAX: (631) 289-0358 www.atmmicrowave.com			<small>THE INFORMATION IN THIS DRAWING IS PROPRIETARY AND SHALL NOT BE USED OR DISCLOSED WITHOUT THE PRIOR WRITTEN CONSENT OF ATM, INC. DO NOT SCALE DWG.</small>	
			UNLESS OTHERWISE NOTED, DIMENSIONS ARE IN INCHES, TOLERANCES ARE: FRACTIONS: ±1/64 ANGLES: ±1/2° DECIMALS 2 PLACE 3 PLACE ±.01 ±.005	DRAWN BF	2-11-10	OUTLINE, WR112 FLEX WG WITH ARMORED SECTION			SIZE A	REVISION A
				CHKD.						CAGE CODE 0R8N4
				APRVD.		MODEL # 112-126-(L)-X-X			SHEET 1 OF 1	
				MATERIAL SEE SPECIFICATIONS						
				TREATMENT						
				FINISH						